

“GRÖSSLING”

SITUÁCIA S 1NP
1ST FLOOR PLAN / SITE PLAN
M 1:300

THE BATHS ENTRANCE

users will access to the baths interactive zone right from the historical main entrance. The entrance hall hosts the ticket office and the reception, connected to the first aid room

A CITY GALLERY

the changing rooms are laid out as a comb: users enter first into a gallery that faces the urban space outside the baths. It's a space for social relations that anticipate the proper changing rooms, and works on the thin boundary between the public and the private realm

TO THE THERAPEUTIC PROCEDURES

once walked through the gallery, users can choose to go up to the first floor where they will find some private changing rooms and the therapeutic facilities; according to the bath management plan, the upper floor containing the therapeutic facilities, can be reached from this dedicated entrance, independently of the rest of the baths area

FOYER EN PLEIN AIR

the entrance hall propagates itself to the outer areas becoming a facility to lay, sit and meet also outside the indoor formal spaces

A MONUMENTAL HALL

the main hall remains the hub of the building, and provides access to every functional part: the baths, the library, the restaurant;

the proposal enable people with disabilities to access to the functions using the same paths as every other people: the elevator foyer could also accommodate the three selfcheck library stations.

TO THE LIBRARY

the main entrance give also access to the upper floor library.

CAFÉ

the café is directly accessible from the main monumental entrance, or can be accessed from the dedicated outdoor entrance; it provides seats for around 40 people and it can be directly connected to the baths if necessary

CONNECTION GARDEN

this giant bamboo garden allows the possible connection between the baths relaxzone and the café, providing a refreshment area in a semi-private and pleasant space surrounded by the ramp that leads to the upper floor solarium

INDOOR EVENT AREA

a flexible open space to host around 50 seats, a kids zone, or to be used as a reading zone

OUTDOOR EVENT AREA

the indoor event area is strictly connected to the event court; an open space, connected to the café that can host events, reading, open air summer cinema, or also used alternatively by the resting zone as open space

TO THE SOLARIUM

the connection garden hosts the ramp to the first floor open spaces: the solarium and the orangery

EVENTS GREENHOUSE

the space of the ancient heating generator is converted to be alternatively included in the bath paths or in the event area. It can be an evocative scenery to a late evening reading, or a pleasant walk in the middle of one bath and the other in an aromatic garden

THE WATER RESERVOIR

the building structure is multiplied to provide an evocative scenario to the changing pools; visitors will dive between the pillars in the hot pool and in the cold one

CHANGING ROOMS

RESTING ZONE HALL

independent access to the resting zone facilities

BATHS'S FOYER

all the active zone is conceived around the idea of a circular path; the users should have always the possibility to walk through the spaces in sequences without arriving to a dead end. This space is one of the fundamental pivots of the proposal

THE CHILDREN POOL

we propose to insert this additional pool that can have an high impact on the bath experience improving the circular path idea; the pool can be used for specific recreational purpose like a space for children or a more private salt water pool

FINNISH SAUNA GARDEN

the outer court can host the Finnish saunas, and provide a space for outdoor recreation also during cold winter days

RELAX ZONE

resting areas, benches, beds

THE SITTING POOLS

this space represents the core of the Grossling city baths: it is the hub where all the circular paths converge

THE STEAM BATHS

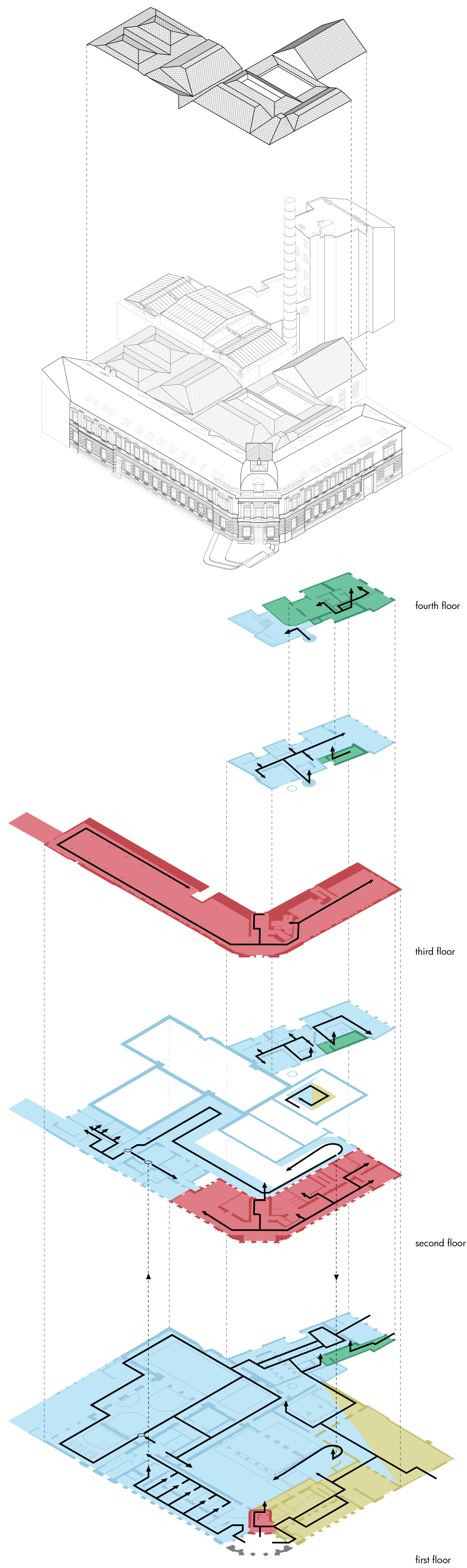
this central health hub can be equipped exclusively with the steam baths as well as hosting several water stream facilities

SEMI-OPEN RESTING SPACE AND INDOOR - OUTDOOR RECREATIONAL POOL

those spaces are restored in the respect of the original image of the central pavilion and according to the new function as semi-openair pools

THE SWIMMING POOL

this pool, together with the sitting pools, and the indoor-outdoor recreational pools, represents the most iconic image of Grossling city baths. The restoration interventions will be limited to:
- removing the obsolete heating system
- providing a new climate control system, integrated with the architectural image
- refurbishing and restoring the openable roof mechanisms
- conserving and restoring the architectural surfaces to re-enable the perception of the ancient baths

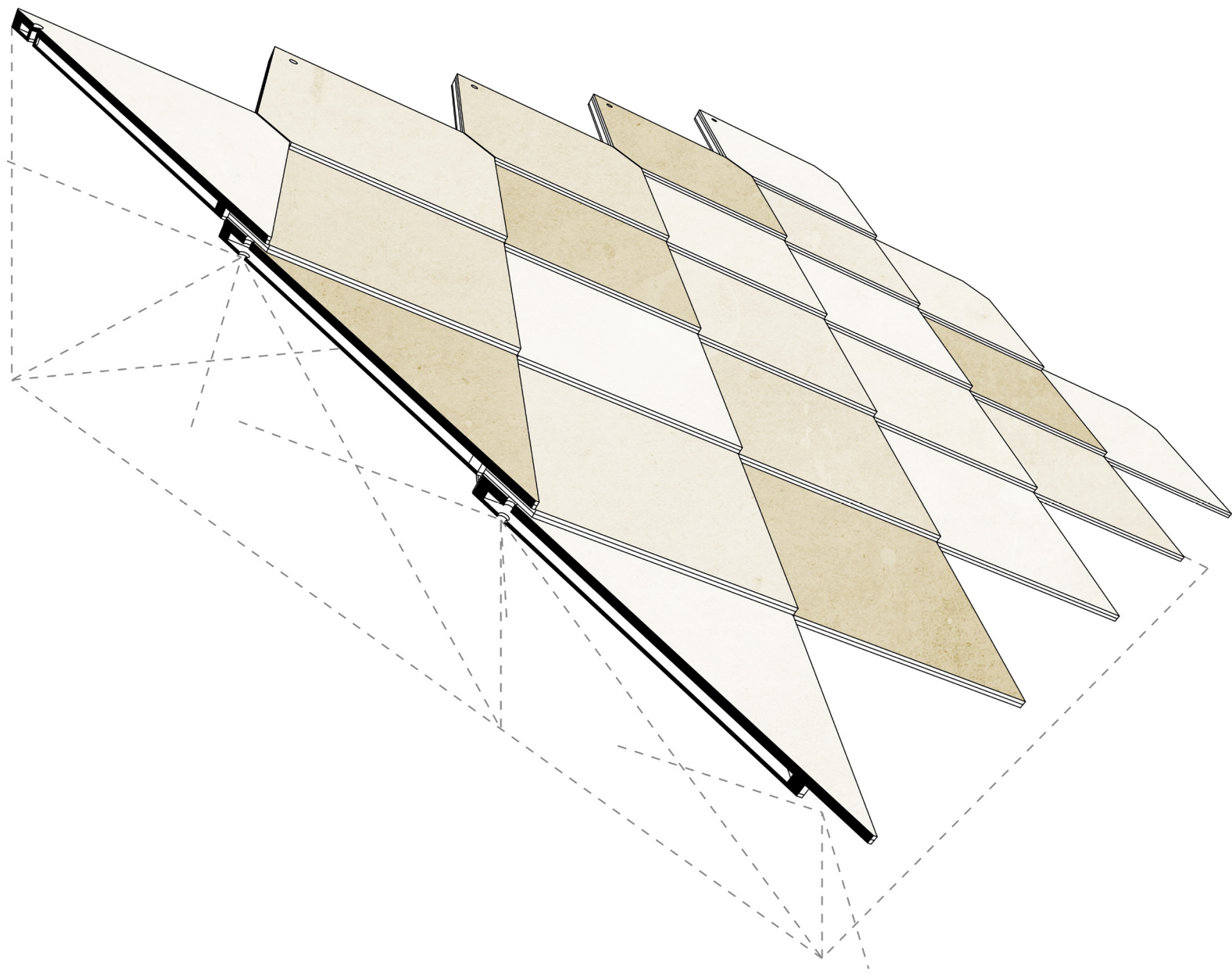


BATHS	CAFÉ - EVENTS
A CIRCULAR PATH the proposal is focused on the definition of a circular path that connect every different pool and relation space; visitors will be able to seamlessly walk across the two floors of the baths returning to the starting point	RESIDENTIAL
	LIBRARY

IMPLEMENTATION IN STAGES

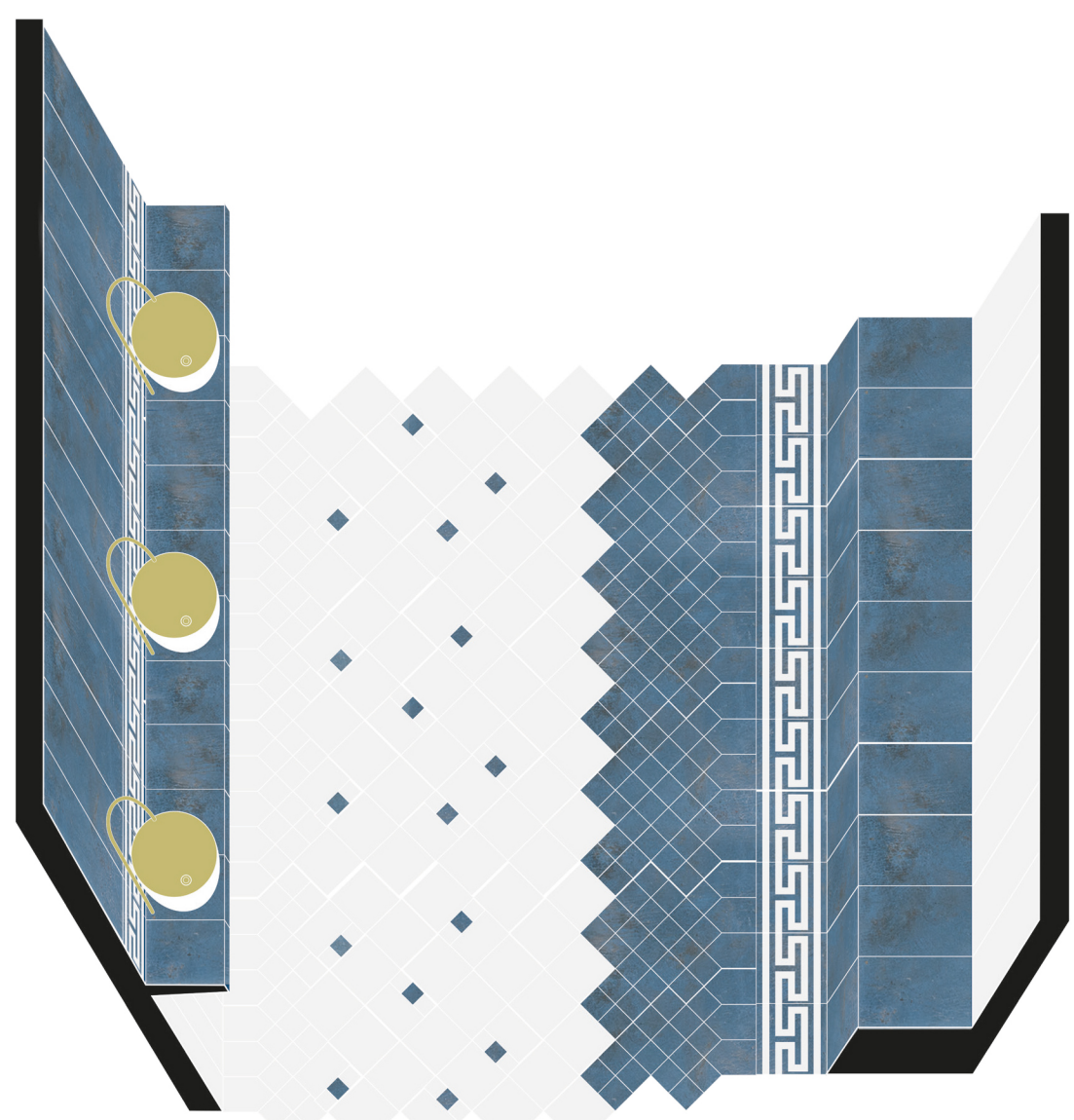
The proposal is conceived to permit a partial implementation in stages, starting from the restoration of the entrance hall together with the outdoor spaces along Medená street that improve the accessibility of the building also to persons with disabilities. The following minimal intervention units can be arranged according to the manager needs.

- Baths:
1. the minimum intervention area correspond to the ground floor changing rooms and the historical swimming pool, sitting pool and the new children pool.
 2. The indoor-outdoor pool, together with the first floor greenhouse and the therapeutic spaces can follow in a second phase.
 3. the resting zone represents the last consistent functional part.
- Library:
- we propose to realize all together the library spaces.
- Café - events:
- Also the café can be articulated in two different construction steps. The minimal coincide with the proper café space, while the second with the events area and the outdoor facilities.



A LIVERY OF TRANSLUCENT GLASS SHINGLE

the new proposed skylights and greenhouses will be covered by a site specific shingle system; a double skin shingle layer, supported by an internal lightweight lattice structure, that could control the indoor luminance and light the baths with an unprecedented nuanced effect



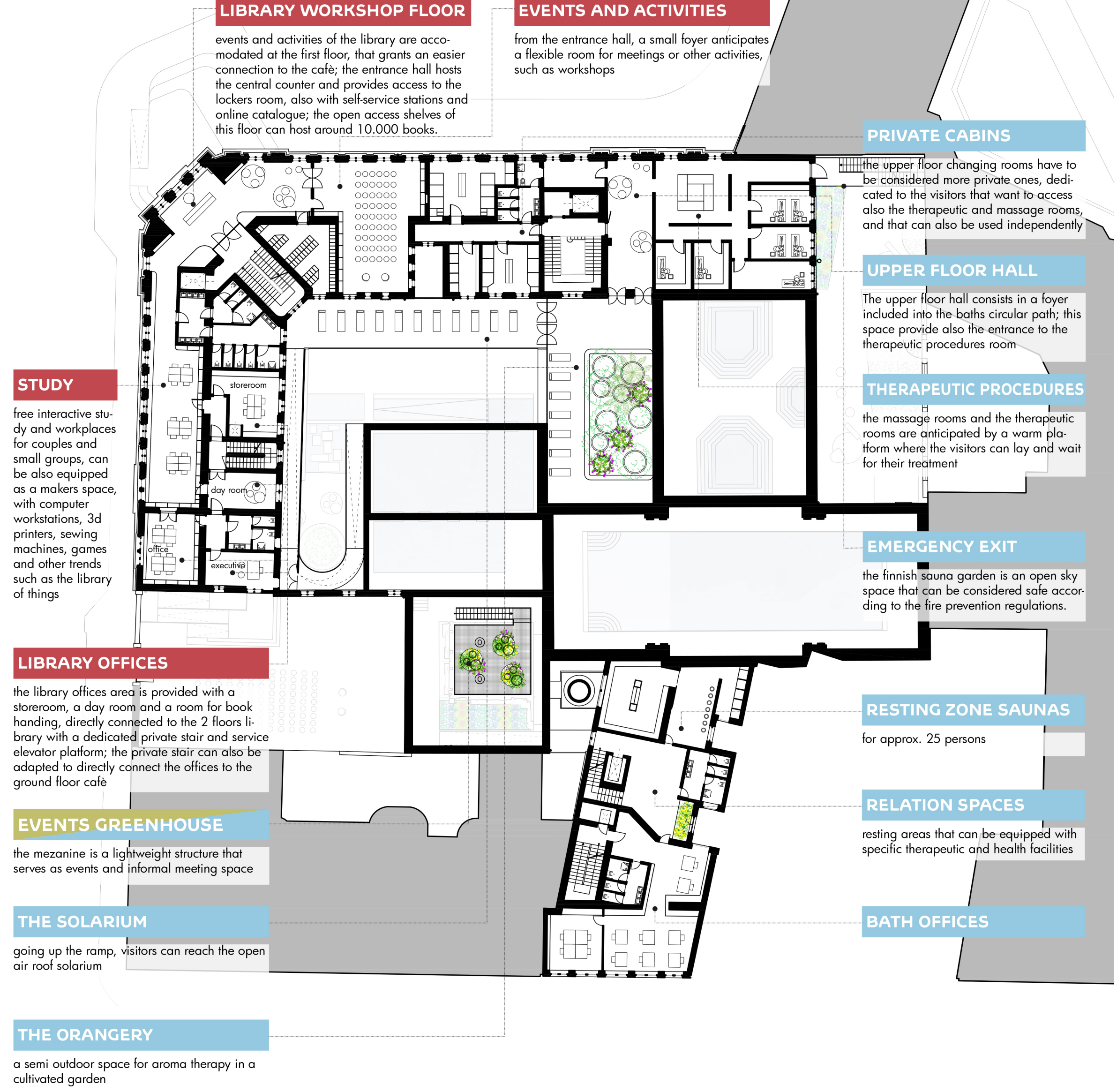
DRINKING FOUNTAINS PASSAGE

the ceramic tiling will receive a great attention to evaluate the reuse of ancient patterns, exactly as they were or according to new contemporary compositions that attempt to not lose the feeling of the ancient spaces

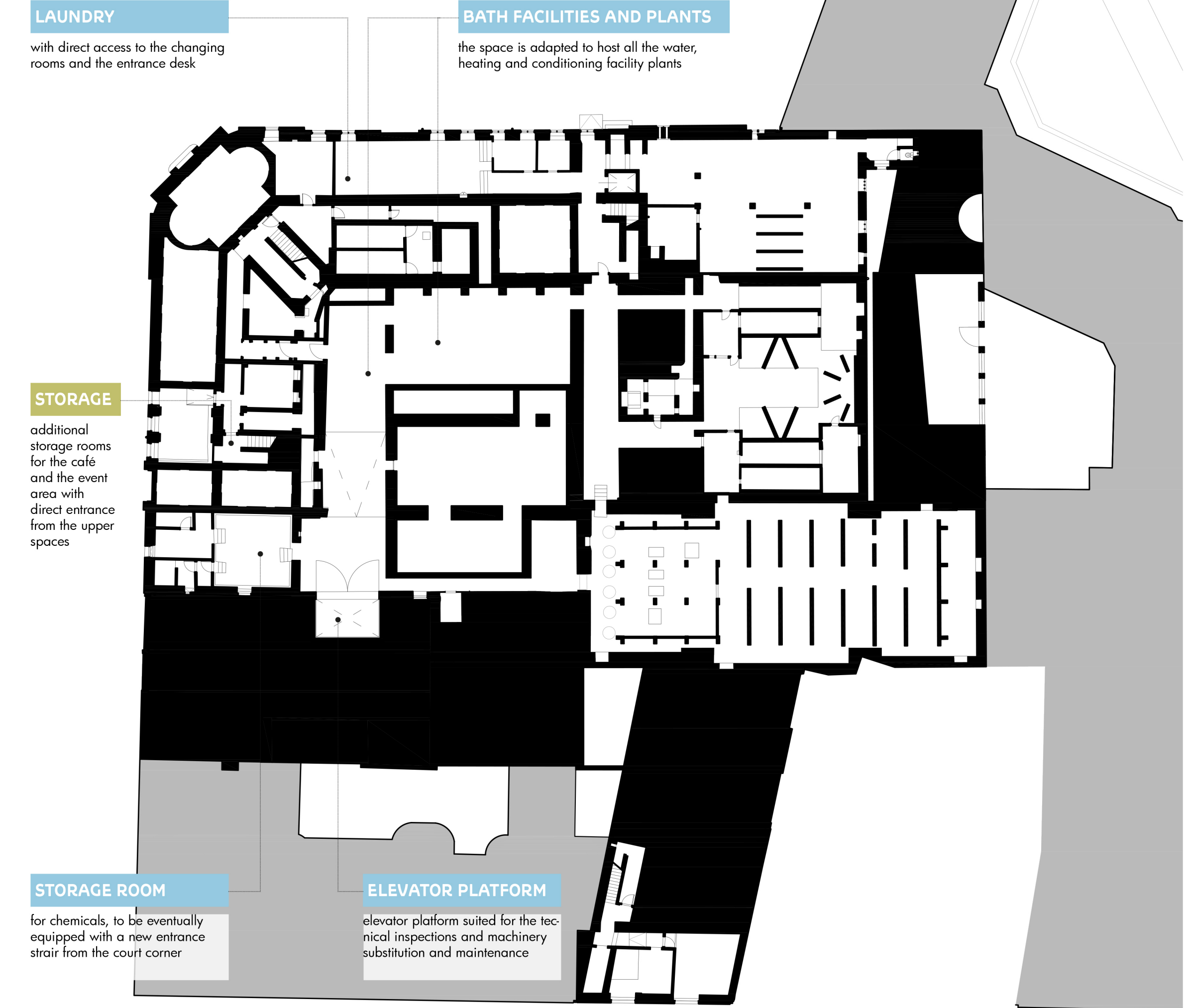


POZDĽŤNY REZ
LONGITUDINAL SECTION
M 1:100

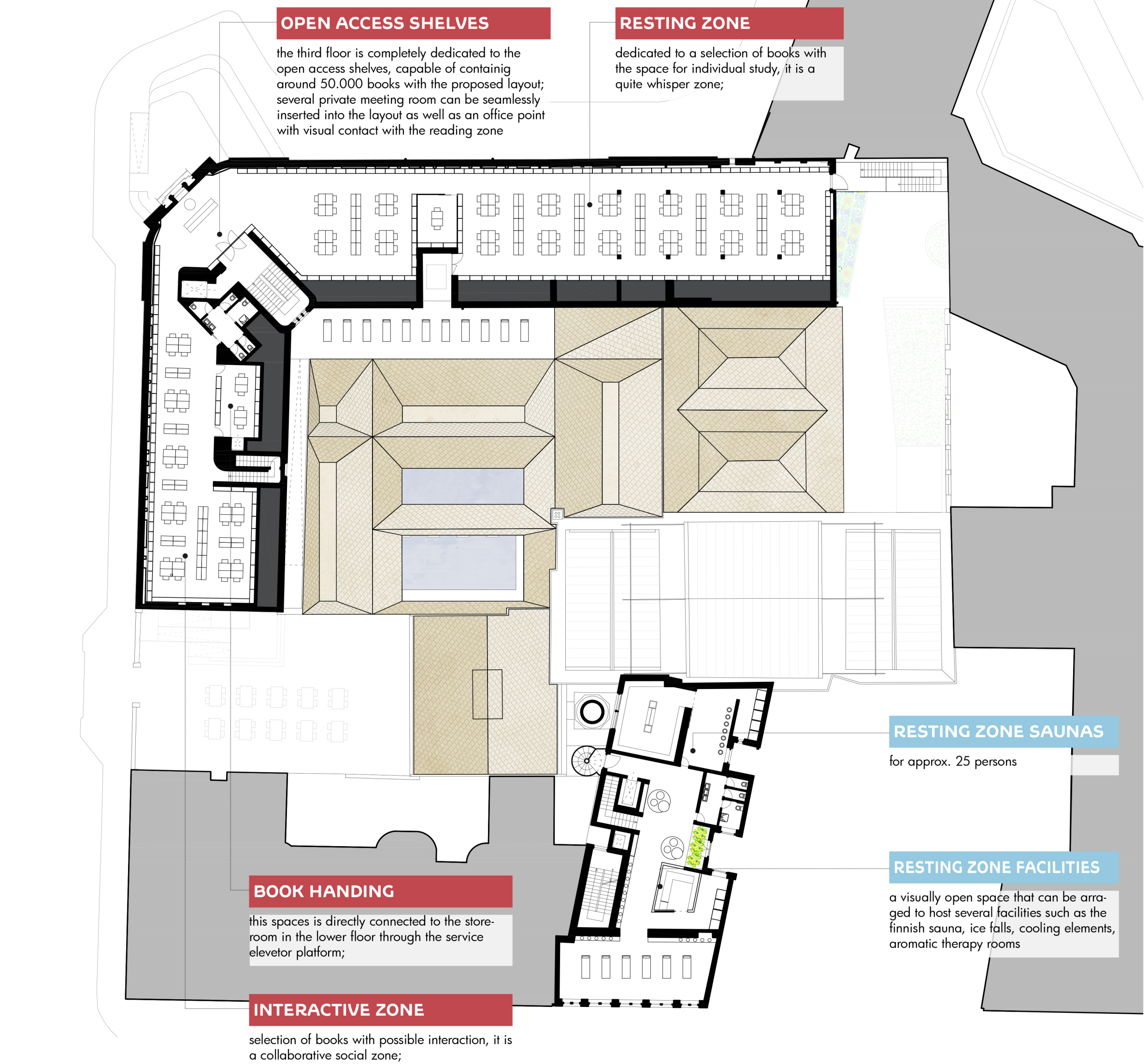
PÓDORYS 2NP
2ND FLOOR PLAN
M 1:300



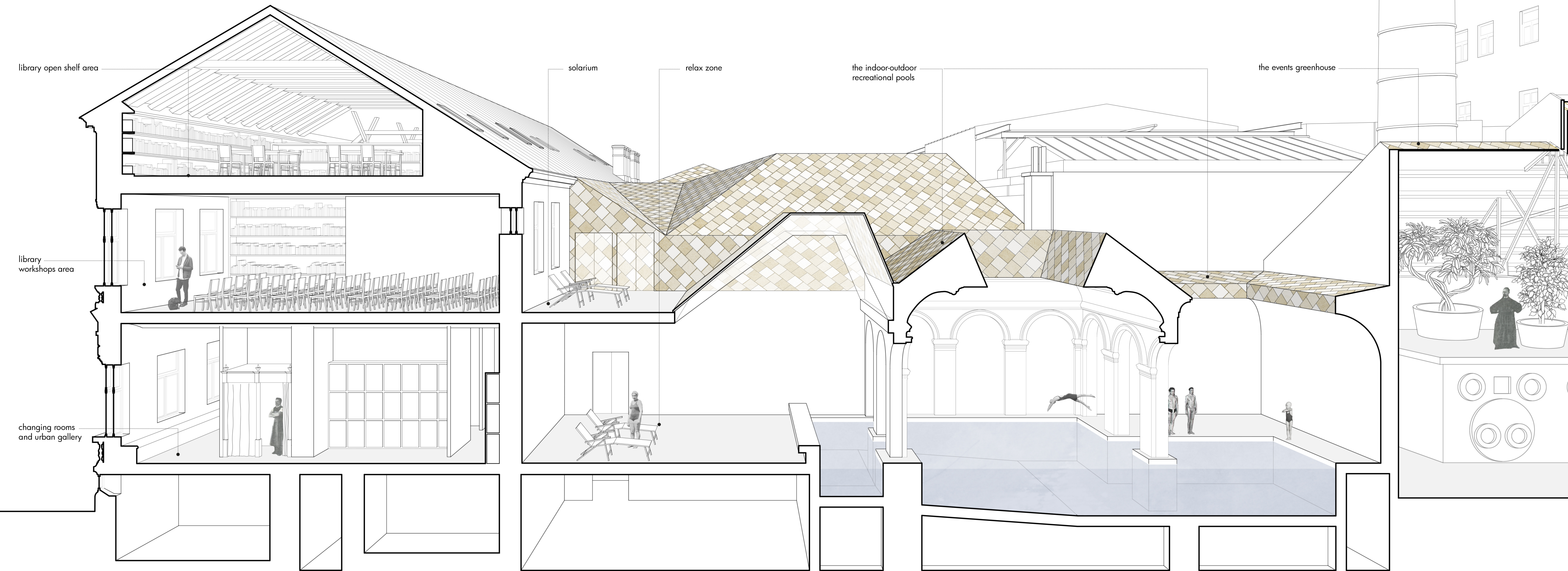
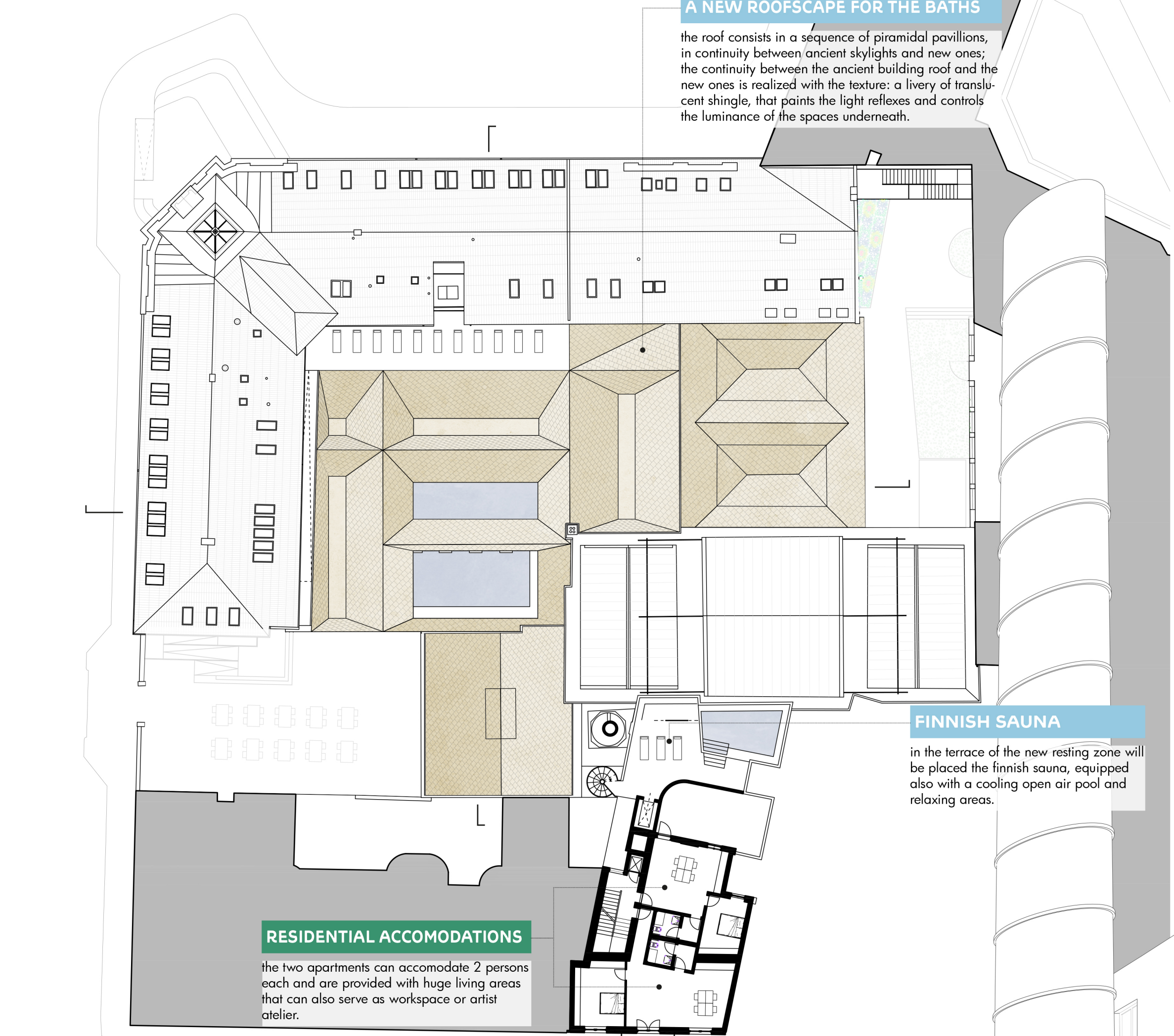
PÓDORYS 1PP
BASEMENT
M 1:300



PÓDORYS 3NP
3RD FLOOR PLAN
M 1:300



PÓDORYS STRECHY
ROOF PLAN
M 1:300



PRIEREZ
CROSS SECTION
M 1:66