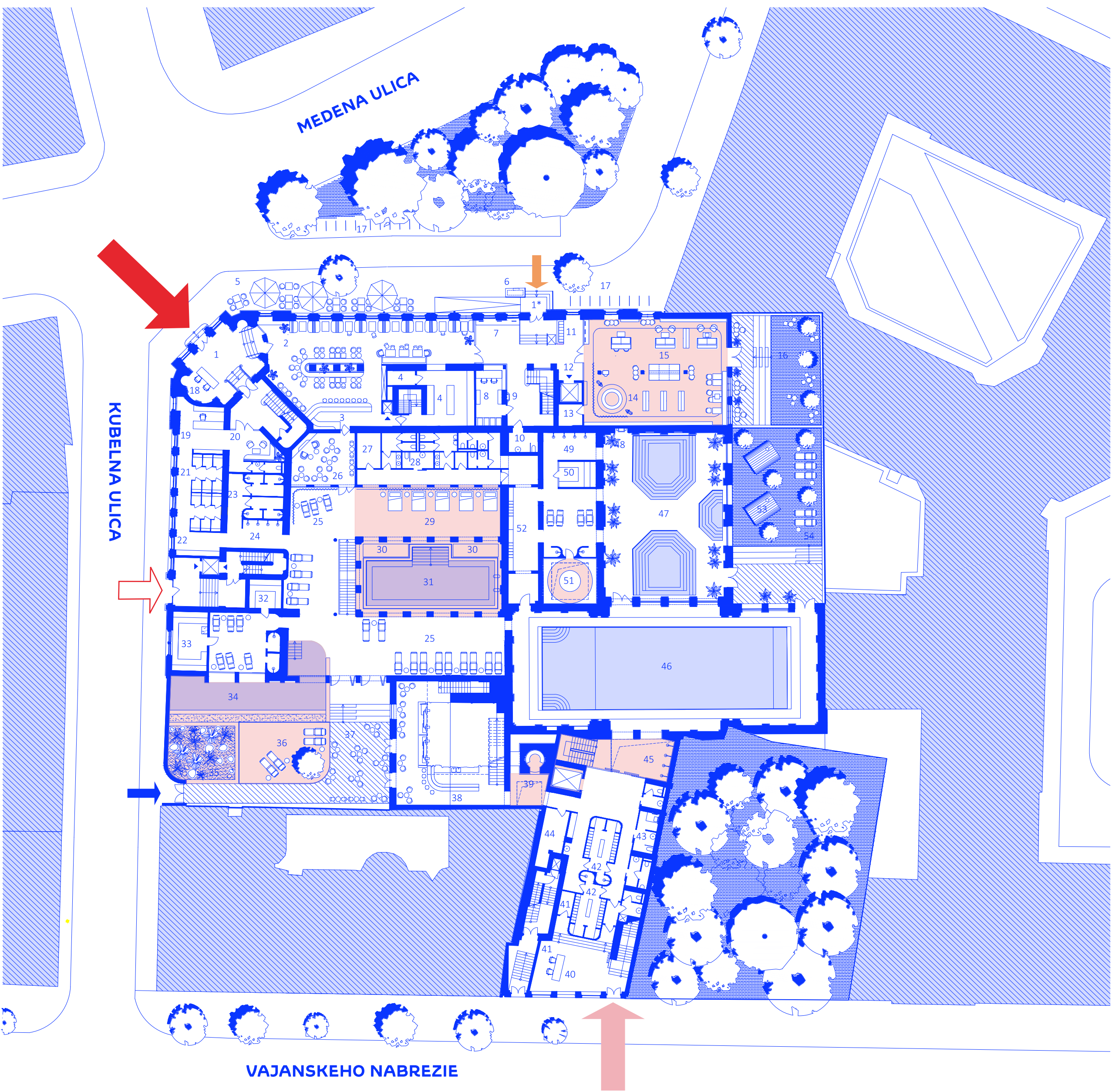


1ST FLOOR PLAN / SITE PLAN – M 1:300



GRÖSSLING – A LANDMARK AND HISTORICAL KALEIDOSCOPE

1ST FLOOR

1 ENTRANCE
1* ENTRANCE BARRIER-FREE
2 GUEST AREA CAFÉ RESTAURANT – 138 m²
3 BAR WITH CONNECTION
4 KITCHEN RESTAURANT/
STORAGE/ FOOD-LIFT
5 OUTDOOR RESTAURANT

*Café-Restaurant indoor: 77-96 seats
Café-Restaurant outdoor: 34 seats
Kitchen: 32 m², dry storage next to kitchen: 4,3 m²
Storage basement: 10 m²*

6 SELF-SERVICE MACHINES 24H
7 SELF-SERVICE STATION
8 CENTRAL COUNTER/
INFORMATION LIBRARY
9 DRINKING FOUNTAIN
10 BARRIER-FREE WC
11 LOCKER SPACE FOR VISITORS
12 LIFT TO WC / LOCKERS
13 BASEMENT- LIBRARY
14 STORAGE CLEANING FACILITIES
15 KIDS CORNER - OPEN SPACE
16 READING SPACE - OPEN SPACE/
CAFÉ/ NEW BOOKS/ NEWSPAPER
SPACE FOR BOARD GAMES/
LIBRARY OF THINGS
17 LIBRARY GARDEN (OUTDOOR)
BICYCLE STANDS

18 ENTRANCE/ TICKET COUNTER
19 SHOP/ RENTAL CITY BATH
20 WAITING AREA
21 PRIVATE CABINS
22 HAIRDYING ZONE
23 SHOWERS - WC
24 SHOWERS/ HYGIENIC FILTER
25 RESTING ZONE
26 CAFÉ/ RESTAURANT– 31 m² (18 seats)
27 FIRST-AID STATION
28 BARRIER-FREE WC
29 WATER BEDS
30 HOT STONE
31 NEW RELAX POOL
WITH NOZZLES (INTERVENTION 1)
32 STEAM BATH
33 FINNISH SAUNA
34 NEW SUSTAINABLE OUTDOOR POOL
35 HYDROBOTANIC REGENERATION POND
36 RELAX GARDEN
37 SNACK BAR / TERRASSE – 53 m² (min. 23 seats)
38 SNACK BAR /
ESPRESSO BAR INDOOR – 46 m² (min. 17 seats)
39 CHIMNEY TEE ROOM

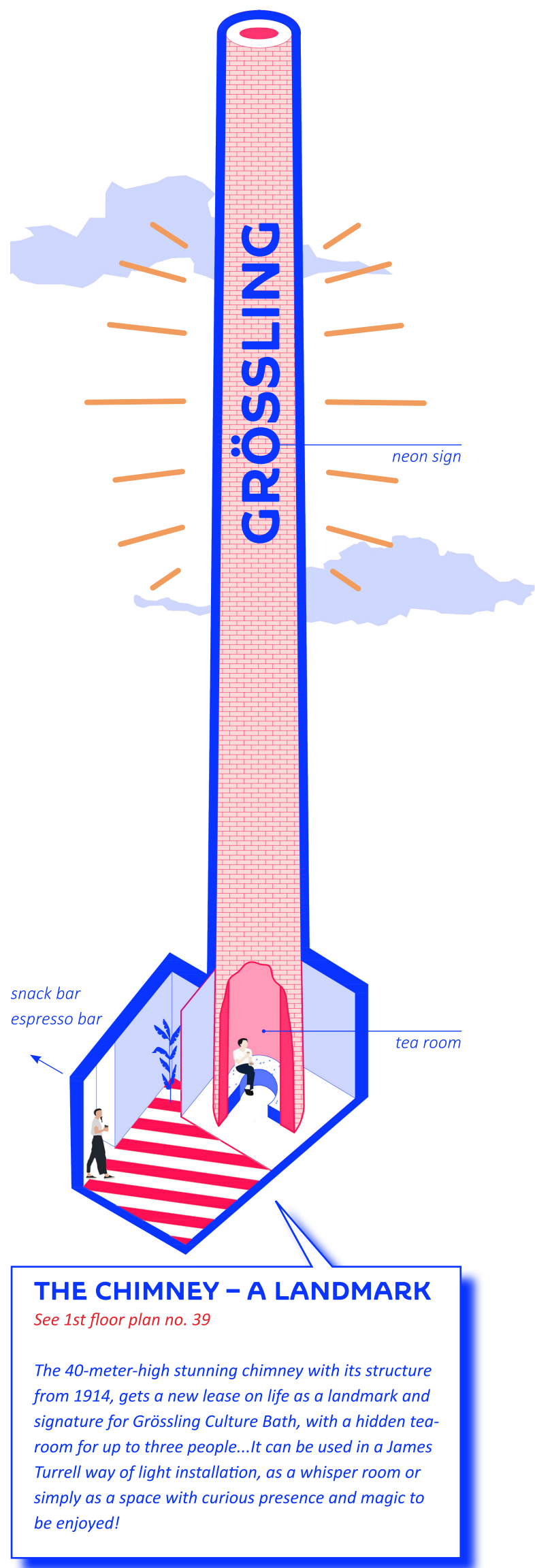
1ST FLOOR

40 TICKET COUNTER CITY BATH
41 SHOP/ RENTAL/ STORAGE
42 CHANGING ROOMS, LOCKERS,
SHOWERS/ WC
43 CHANGING ROOMS
BARRIER FREE INCL. WC AND SHOWERS
44 STORAGE/ CLEANING FACILITIES
45 SHOWERS/ HYGIENIC FILTER / NEW VOID
46 HISTORIC SWIMMING POOL
47 SITTING BATH
(HOT, COLD, LUKEWARM)
48 DRINKING FOUNTAIN
49 SHOWERS/ HYGIENIC FILTER
50 HERBAL SAUNA
51 STEAM BATH / HAMAM
52 TOWELS / LOCKERS
53 BARREL SAUNA 2-4 PERSON (EACH)
54 RELAX GARDEN CITY BATH

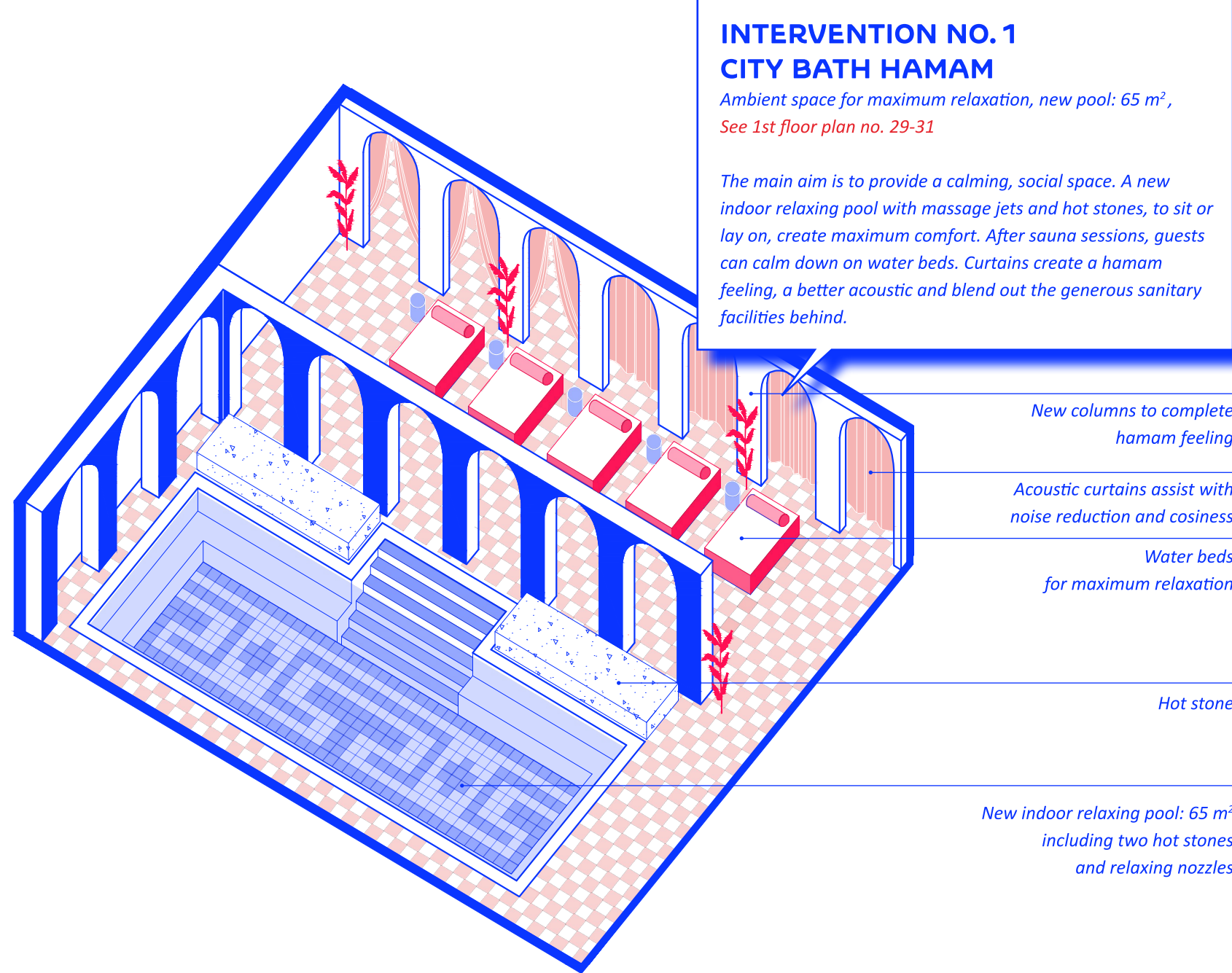
The main aim is to save as much of the old structure and architecture as possible, to get a beautiful architectural kaleidoscope which reflects the multicultural purpose of this building as a cultural landmark of Bratislava!

TOP SIX STRUCTURAL INTERVENTIONS FOR GRÖSSLING

1 THE HAMAM – AMBIENT RESTING AT RELAX POOL
2 SPACIAL HUB AT WEINWURM & VÉCSEI BUILDING
3 SUSTAINABLE OUTDOOR POOL
4 THE SALTWATER GROTTO
5 THE GRÖSSLING BALKONY – A NEW FACADE
6 THE SILENT ROOF



- MAIN ENTRANCE**
A2 City Bath 08.00 – 22.00 h
B1 Library 0-24 h
B2 Café/ Restaurant 08.00 – 22.00 h
B3 Residency Zone 0-24h
- ENTRANCE CITY BATH (barrier-free)**
A1 City bath administration
A1 City bath 06.00 – 22.00 h
A2 City Bath 08.00 – 22.00 h
- ENTRANCE (barrier-free)**
A1 massage and other therapeutic procedures
B3 Residency Zone 0-24h
- DELIVERY ONLY**
- ENTRANCE (barrier-free)**
B1 Library
B2 Café/ Restaurant 08.00 – 22.00 h



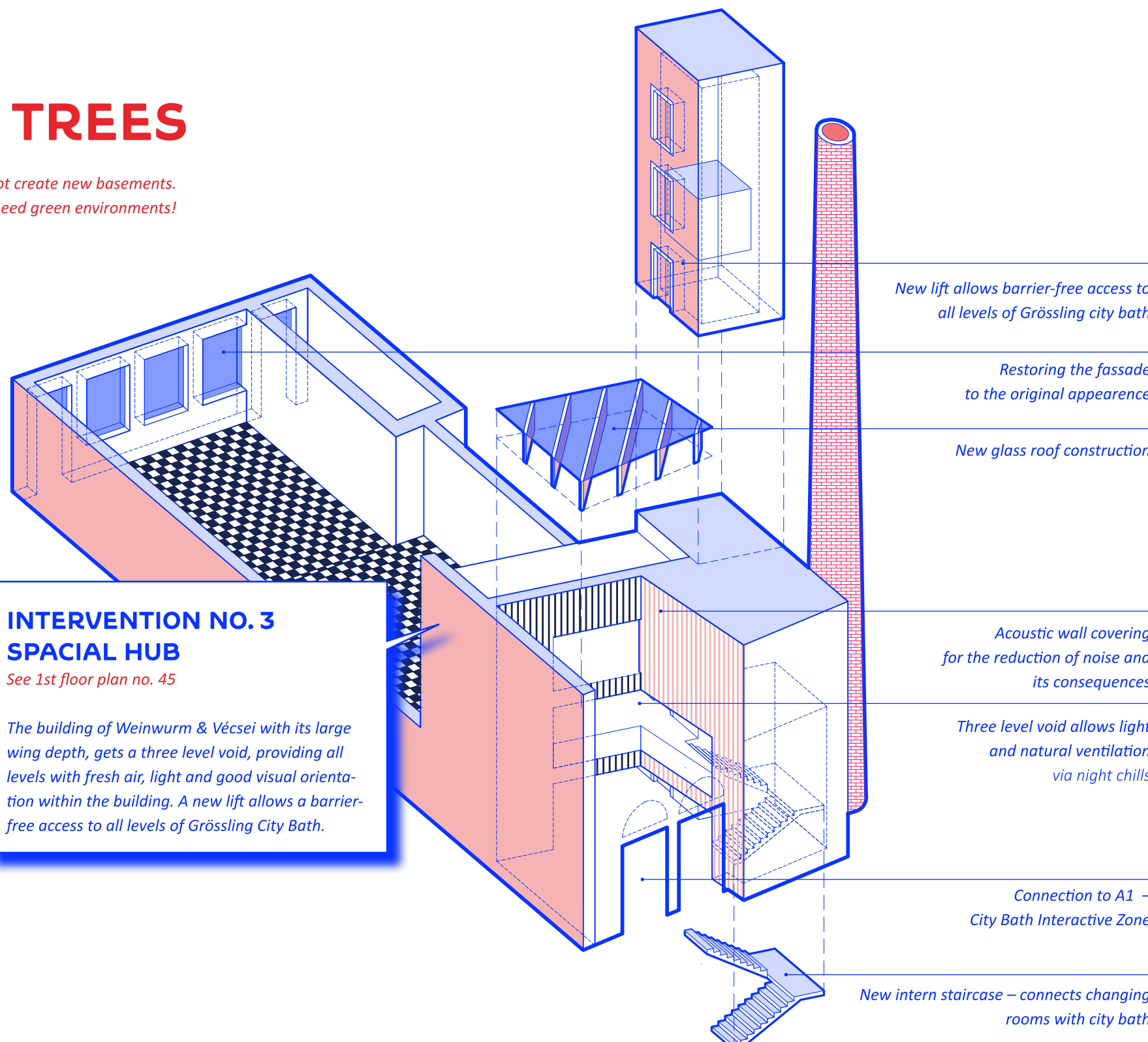
**INTERVENTION NO. 1
CITY BATH HAMAM**
*Ambient space for maximum relaxation, new pool: 65 m²,
See 1st floor plan no. 29-31*

The main aim is to provide a calming, social space. A new indoor relaxing pool with massage jets and hot stones, to sit or lay on. Create maximum comfort. After sauna sessions, guests can calm down on water beds. Curtains create a hamam feeling, a better acoustic and blend out the generous sanitary facilities behind.

- New columns to complete hamam feeling
Acoustic curtains assist with noise reduction and cosiness
Water beds for maximum relaxation
Hot stone

GRÖSSLING IS PLANTING TREES

*All gardens can grow large trees, because we do not create new basements.
Real gardens need plenty of good soil and people need green environments!*



**INTERVENTION NO. 3
SPACIAL HUB**
See 1st floor plan no. 45

The building of Weinwurm & Vécsei with its large wing depth, gets a three level void, providing all levels with fresh air, light and good visual orientation within the building. A new lift allows a barrier-free access to all levels of Grössling City Bath.

- New lift allows barrier-free access to all levels of Grössling city bath
Restoring the facade to the original appearance
New glass roof construction
Acoustic wall covering for the reduction of noise and its consequences
Three level void allows light and natural ventilation via night chills
Connection to A1 – City Bath Interactive Zone
New intern staircase – connects changing rooms with city bath

B1 LIBRARY OPEN SPACE - THE FLEXIBLE SPACE
See 1st floor plan no. 15

Furniture can be hidden behind curtains, to create an open space for diverse events.

Furthermore curtains allow to generate spaces of different sizes for various kind of events.

The garden can be used as an extension of any kind.

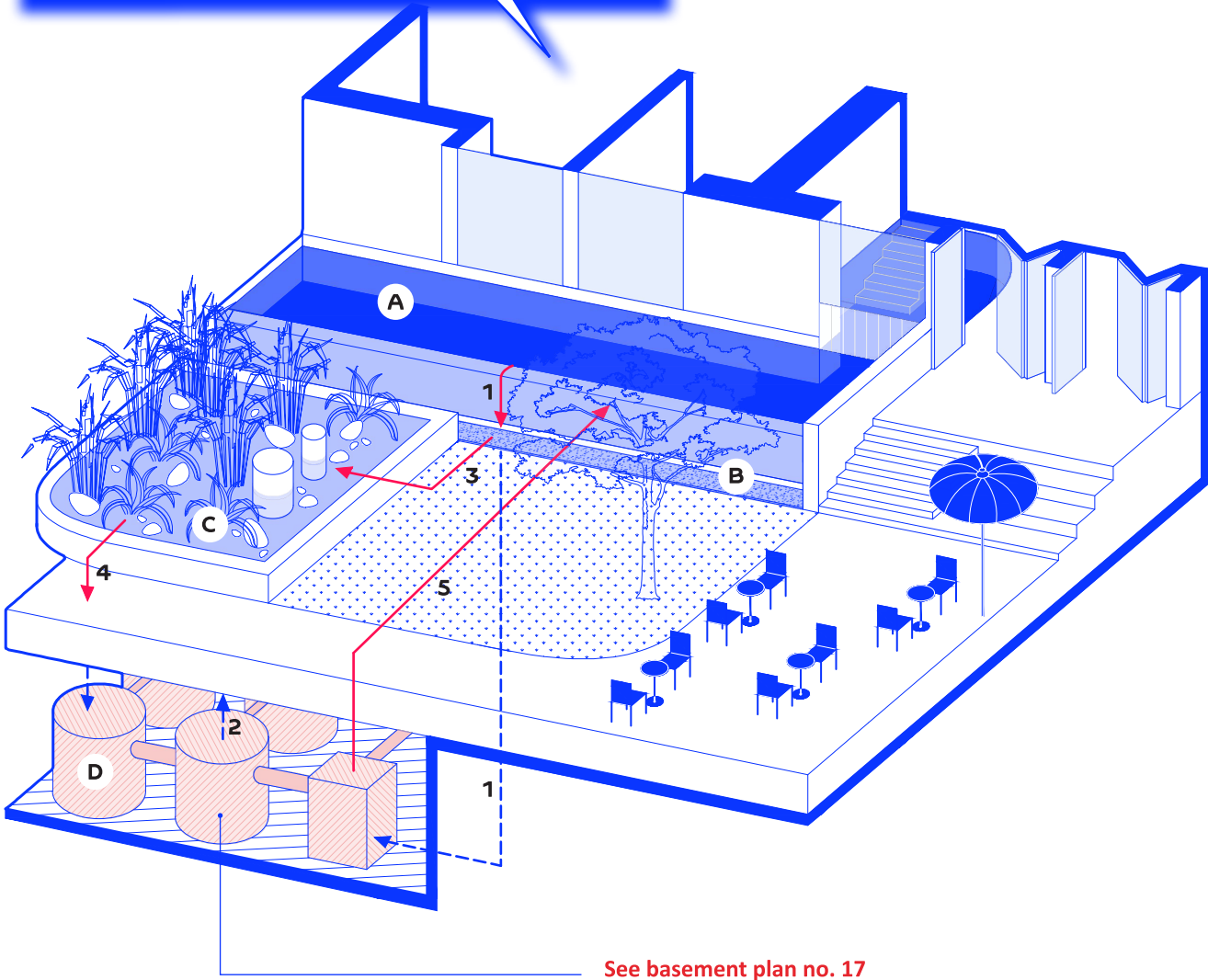
SCENARIO 1
Book readings, exhibition, discussions, film screenings, citizens' meeting, etc.
110-120 seats
Room approx. 117 m²

SCENARIO 2
*Film screenings, lecture
Reception with buffet, etc.*
50 seats
Room 1 approx. 66 m²
Room 2 approx. 46 m²

**INTERVENTION NO. 3
SUSTAINABLE OUTDOOR POOL**
New sustainable outdoor infinity pool leading from indoor: 63 m². See 1st floor plan no. 34

- A OUTDOOR INFINITY SWIMMING POOL
B GRAVEL FILTER BED
C HYDROBOTANIC REGENERATION POND
D PUMPS / TESTING ROOM

- 1 „grey“ water overflow from pool perimeter gutters
2 mixed „grey“ water pumped to gravel bed
3 filtered water flow to hydrobotanic regeneration ponds
4 fully filtered and aerated clean water flows to testing room
5 clean swimming pool water pumped to supply nozzles at base of pools

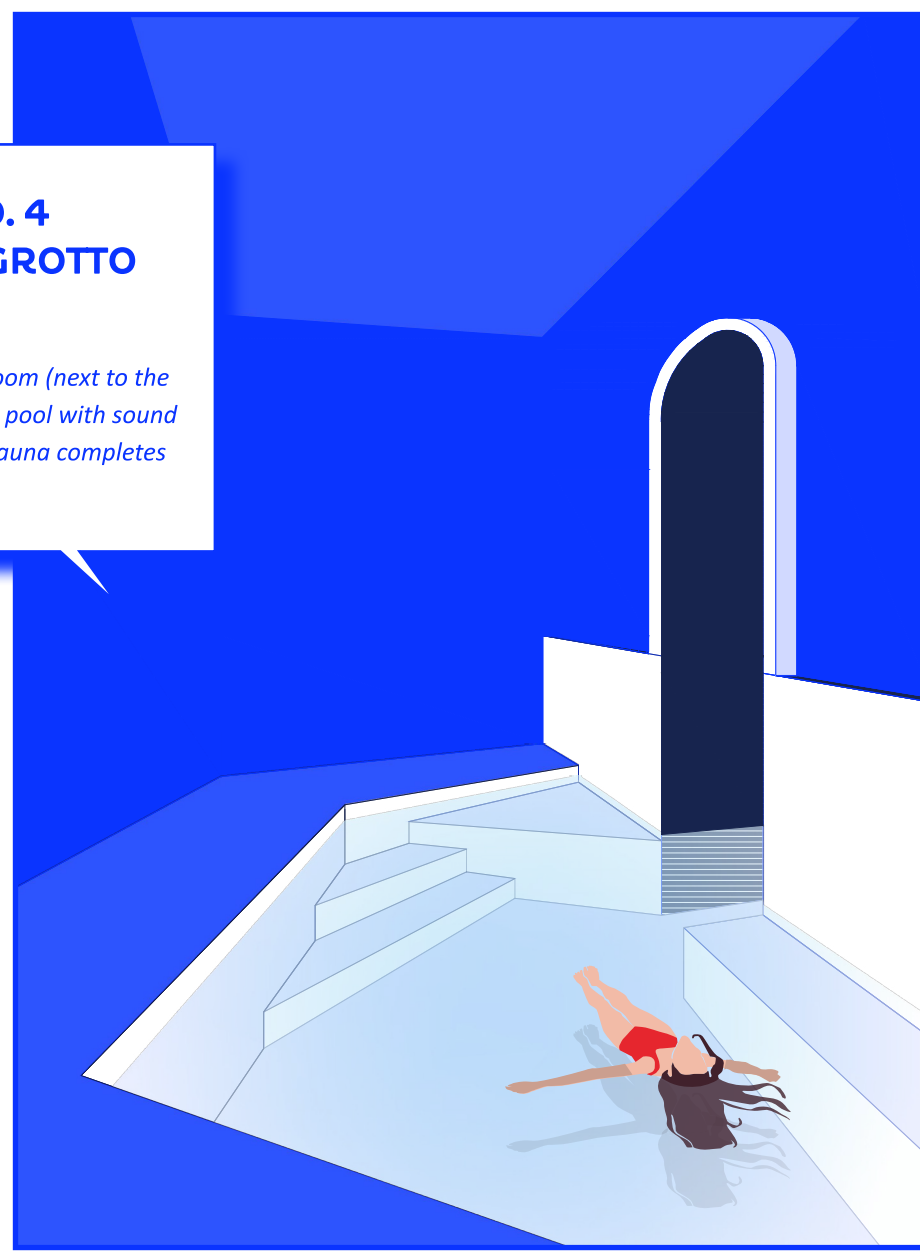


*See basement plan no. 17
40 m², pumps/ testing room of sustainable pool*

**INTERVENTION NO. 4
THE SALTWATER GROTTO**
See basement plan no. 13-15

The existing deepening of cellar room (next to the boiler room) becomes a saltwater pool with sound and light installation. A sole spa sauna completes this approx. 170 m² large area.

*New indoor saltwater pool
45 m², including light and sound*



GRÖSSLING

**INTERVENTION NO. 5
THE GRÖSSLING BALKONY**
The new facade creates a connection between interior and exterior. The „Grössling Balkony“ is resembling the functionalism-wing of Weinwurm & Vécsei in order to create a dialogue between the two main buildings. Large glass doors slide open and provide light and a view into the revitalised garden with trees, plants and a hydrobotanic pond. Exterior becomes interior!

- New Facade
- B3 Residency apartment with court yard connection and french windows „The Grössling Balkony“
- Hydrobotanic regeneration ponds, new trees and plants.



NORTH ELEVATION

- restored historic sunroof
painted walls
ornamental grid and glass
restored historic pool

2ND FLOOR

1

FLAT ENTRANCE – 5,5 m²

2

LIVING ROOM/ KITCHEN – 30 m²

3

BATHROOM – 5,5 m²

4

BEDROOM – 15 m²

B3 Residency zone: 56 m²

5

ENTRANCE – 9,5 m²

6

LIVING ROOM/ KITCHEN – 43 m²

7

BATHROOM – 9 m²

8

BEDROOM – 14 m²

9

KIDS ROOM/ STUDY – 14 m²

B3 Barrier-free residency zone

Rentable at a sustainable level, if not used for residency purposes: 89,5 m²

10

CHANGING ROOMS WITH CHANGING BOOTH + LOCKERS

11

HAIRDRYING

12

STORAGE CLEANING FACILITIES

13

SHOWERS

14

HYGIENIC FILTER/ SHOWERS

15

LOCKERS/ WC

16

HERBAL SAUNA

17

SAUNA

18

INTERVENTION 6

19

NEW ROOF STRUCTURE WITH CANOPY – 265 m²

20

RELAX ZONE / TERRASSE – 383 m²

21

RELAX ZONE WITH FIRE PLACE AND WATER BEDS – 133 m²

22

SELF-SERVICE MACHINES 0-24H

23

RELAX ZONE / STUDY – 64 m²

24

OFFICE EXECUTIVE – 22 m²

25

OFFICE – 21 m²

26

STORAGE BOOK ROOM – 34 m²

27

CONTACT POINT / INFO-COUNTER – see storage

28

DAYROOM LIBRARY STAFF – 33 m²

29

OPEN ACCESS SHELVES/ INDIVIDUAL STUDY / KIDS

30

STORAGE CLEANING FACILITIES

31

STORAGE CLEANING FACILITIES

32

CHANGING ROOMS WITH CHANGING BOOTH + LOCKERS

33

HAIRDRYING

34

PRIVATE CABINS

35

SHOWERS

36

THREE-LEVEL VOID (INTERVENTION 3)

BASEMENT

1

0-24 H SELF-SERVICE MACHINE

2

STORAGE LIBRARY – 148 m²

3

LOCKERS LIBRARY

4

WC CAFÉ/ LIBRARY

5

STORAGE CLEANING FACILITIES

6

CHANGING ROOM – 17,4 m²

7

(MALE STAFF) CHANGING ROOM – 16,5 m²

8

(FEMALE STAFF) CHANGING ROOM – 13 m²

9

AND FOOD LIFT

10

INTERNAL STAIRCASE CAFÉ

11

HOUSE TECHNIC / STORAGE OF CHEMICALS

12

WORKSHOP – 22 m²

13

GARBAGE ROOM – 23 m²

14

RAIN SHOWERS AND WC

15

SOLE SPA SAUNA AND LOCKERS

16

SALTWATER POOL (NEW AREA) – 147 m²

17

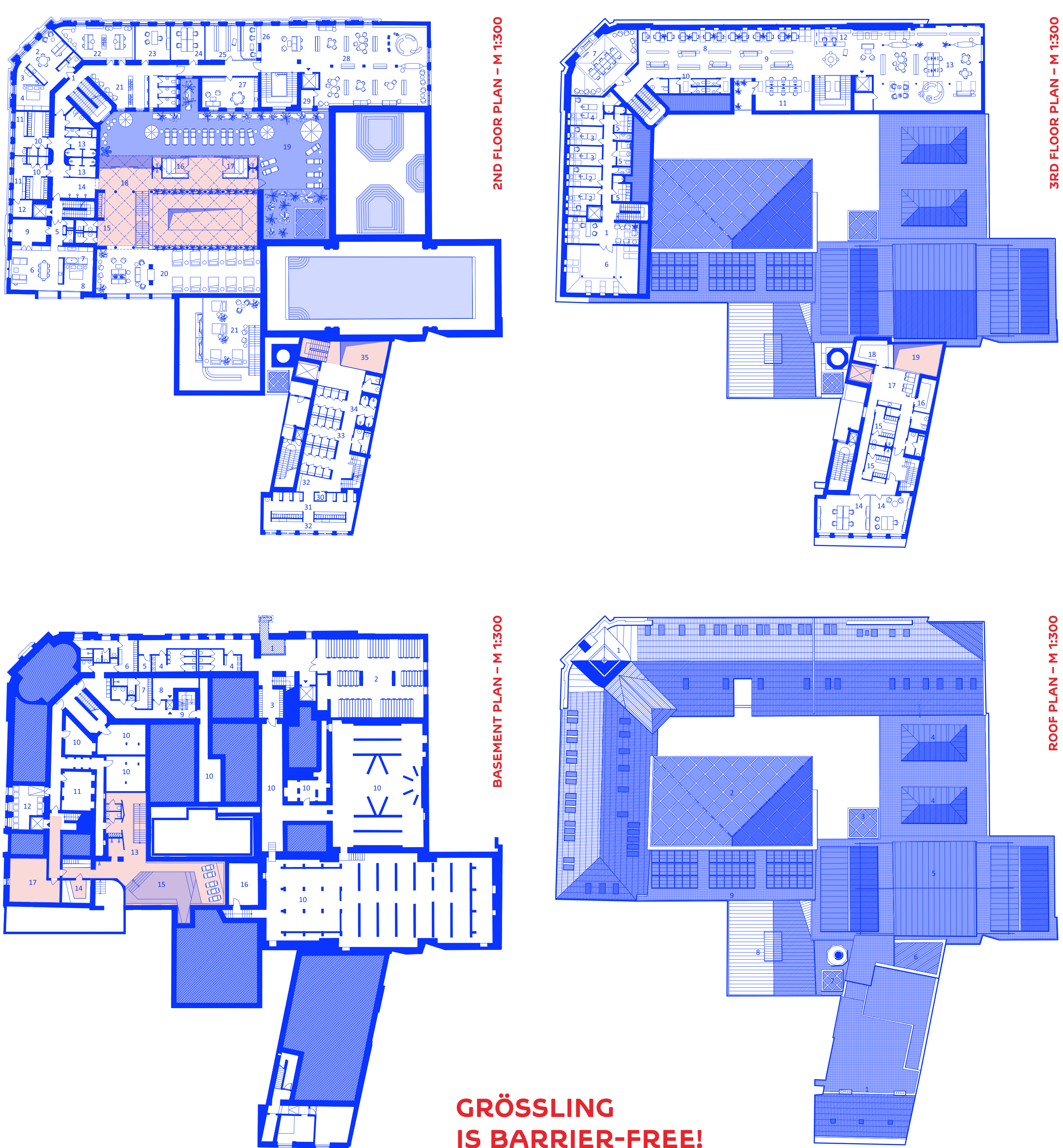
STORAGE SNACK BAR – 23 m²

18

PUMPS/ TESTING ROOM OF SUSTAINABLE OUTDOOR POOL – 40 m²

•

including sanitary facilities



3RD FLOOR

1

RECEPTION/ WAITING AREA

2

THERAPEUTIC PROCEDURES

3

INDIVIDUAL MASSAGE

4

COUPLES MASSAGE

5

CHANGING ROOM/ SHOWER

6

PHYSICAL THERAPY, YOGA, ETC.

The zone for therapeutic procedures is barrier-free and to be entered from a separate entrance.

A barrier-free WC, changing room and shower is considered.

7

STUDY FACILITIES/ WORKSHOPROOM – 57 m²

8

RESTING ZONE/ STUDY ZONE

9

OPEN ACCESS SHELVES

10

SANITARY FACILITIES + BARRIER FREE WC

11

SELF-SERVICE ONLINE CATALOGUE/ COMPUTER WORKSPACE

12

CONTACT POINT / INFO-COUNTER

13

STUDY ZONE FOR YOUNG READERS/ PUPILS

14

OFFICE CITY BATH ADMIN – 36 m² + 28 m²

15

CHANGING ROOMS STAFF CITY BATH – 12 people each gender

16

LAUNDRY ROOM – 10 m²

17

KITCHEN / DAYROOM – 31 m²

18

STORAGE ROOM – 20 m²

19

THREE-LEVEL VOID

Note: floor area 210 m², office area 122 m²

THE ROOF

1

RENOVATION IF NECESSARY

2

NEW WINDOWS IN SOME CASES

3

REMOVAL OF OLD SKYLIGHTS

4

NEW ROOF STRUCTURE WITH TERRASSE CANOPY – 265 m²

5

NEW SKYLIGHT ABOVE

6

STEAM BATH – 17 m²

7

RENOVATION OF OLD SKYLIGHTS

8

REPAIR OF HISTORIC SUNROOF

9

NEW ROOF STRUCTURE ABOVE VOID – 23 m²

10

NEW ROOF STRUCTURE – 8,5 m²

11

RENOVATION OF ROOF

12

RESTORED ROOF WITH SOLAR PANELS

The main aim is the simplification of the roof landscape in order to calm it down and create new terraces for relaxation. The solar panels provide sustainable energy.

