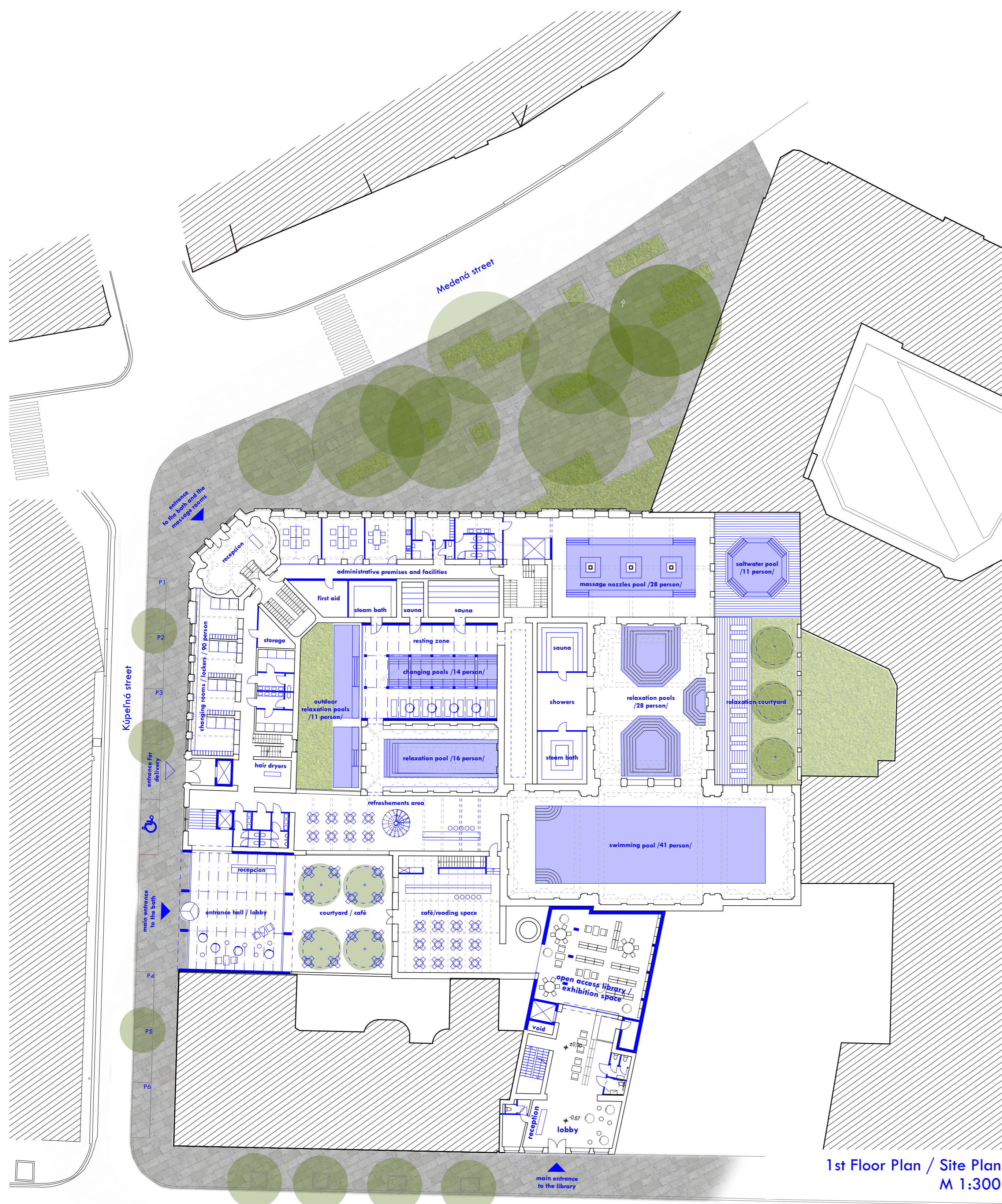


GRÖSSLING CITY BATH RENOVATION



Considering its various alteration throughout history, our aim was to maintain the original structures as much as possible, reconstructing some of its original layout, showing its layers of history and opening up new courtyards for a less crowded setting.

While trying to maintain the original layout, it was clear, that the original entrance point is too small for the expected capacity, hence it is used for the employees of the bath, and the guest coming for only therapeutic treatments.

Three major interventions takes place, one is opening new entrance hall at Kupelna to accommodate the projected capacity, the second is opening a new courtyard in the middle of the compound, evoking its original layout, the third is creating a new wing for the library next to the historic chimney.

The bath has three main zones, the public entrance point, with a cozy café terrace for the users of the bath and the library, and also for citizens to just spend time in.

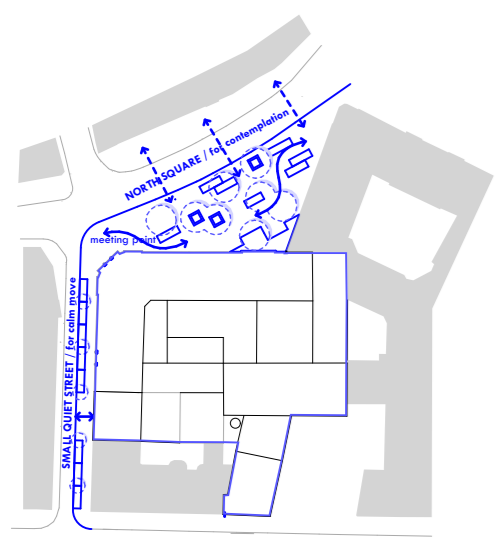
The resting zone is the most relaxed space in the complex, with a focus on saunas, steam baths, and resting pools. A new courtyard lets in natural light to both the spas and the locker rooms.

The interactive zone occupies the largest part of the complex, with many existing spaces restored to its original condition. Mainly existing spaces are used, with a new relaxation pool created at the northeast corner, and a roof terrace created for outdoor activities.

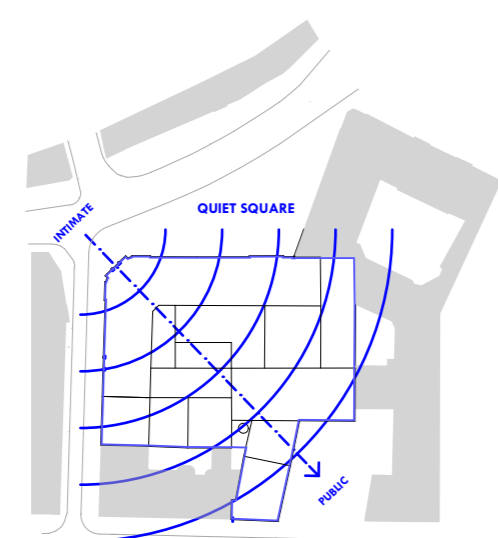
The three courtyards comprise an essential part of the intervention, they represent the various uses the complex aims to occupy, each has various levels of intimacy.

Due to the differing needs of the programme the library is housed at the most separated part of the complex, with the main entrance of the library is opened at the Vajanského Nábřeží street. The first floor houses the most open part of the library, with a large open space, able to house various events, and a café at the former boiler house, as a meeting point between the two uses. The rest of the building houses spaces for the different target groups of the library, each with a separate floor, and one storey reserved for the artist in residence programme.

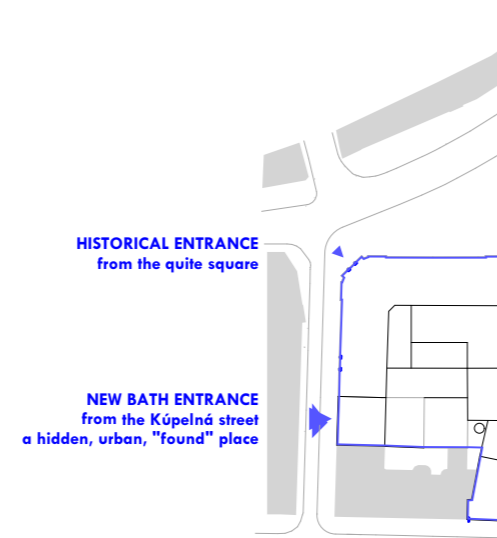
The park at Medená street was taken back from the vehicles, and is designed to encourage civic life, gatherings in a quiet piazza in the middle of Bratislava.



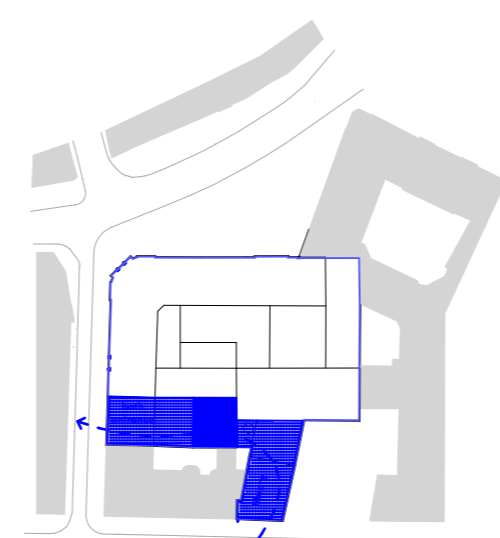
surrounding areas



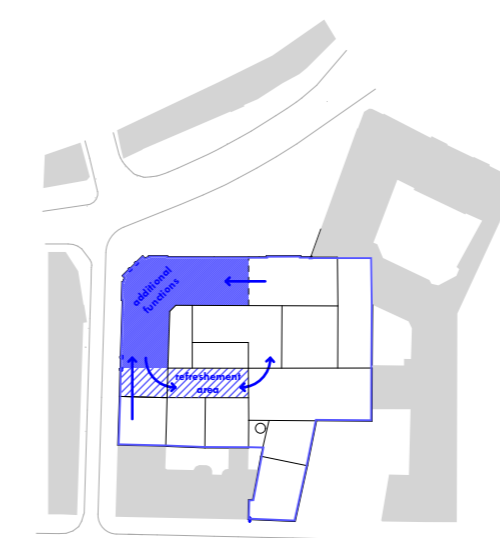
character of the surrounding streets affects the functional arrangement



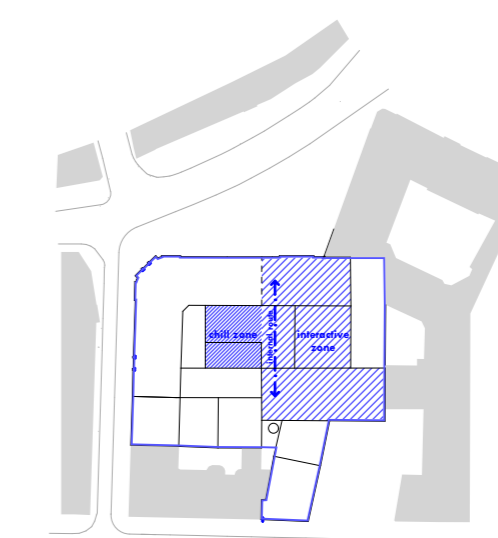
entrances



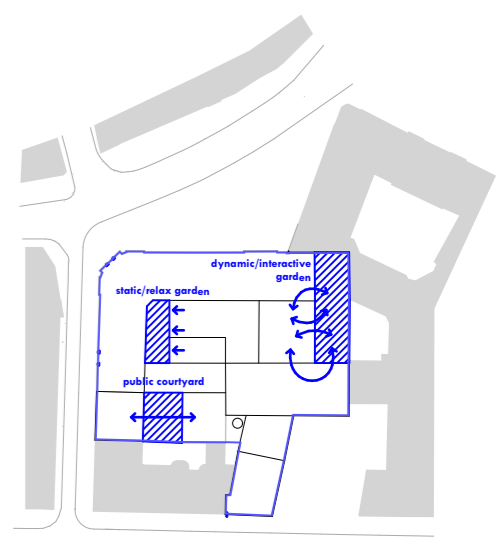
open public functions



bath supplementary functions



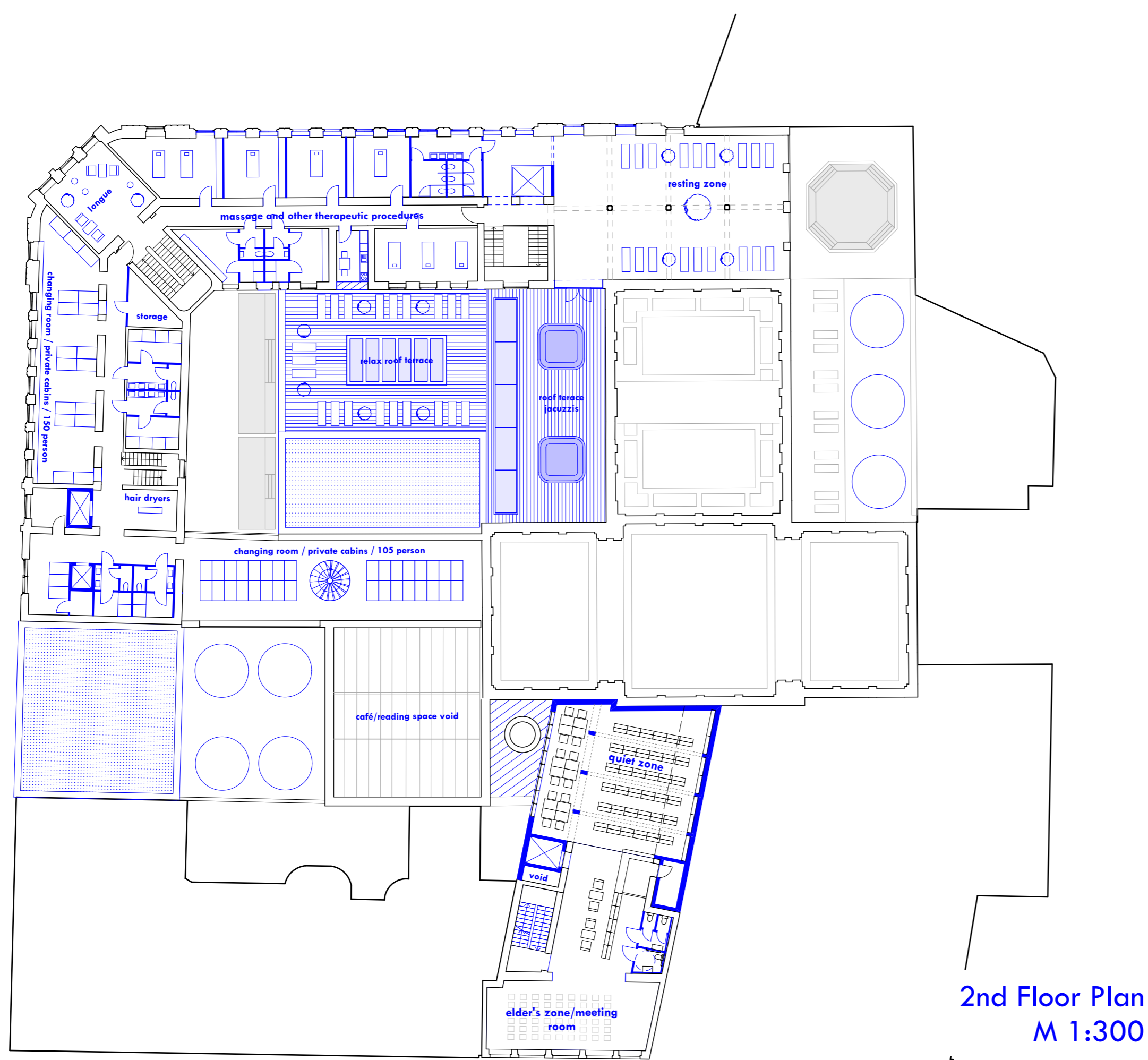
bath spaces



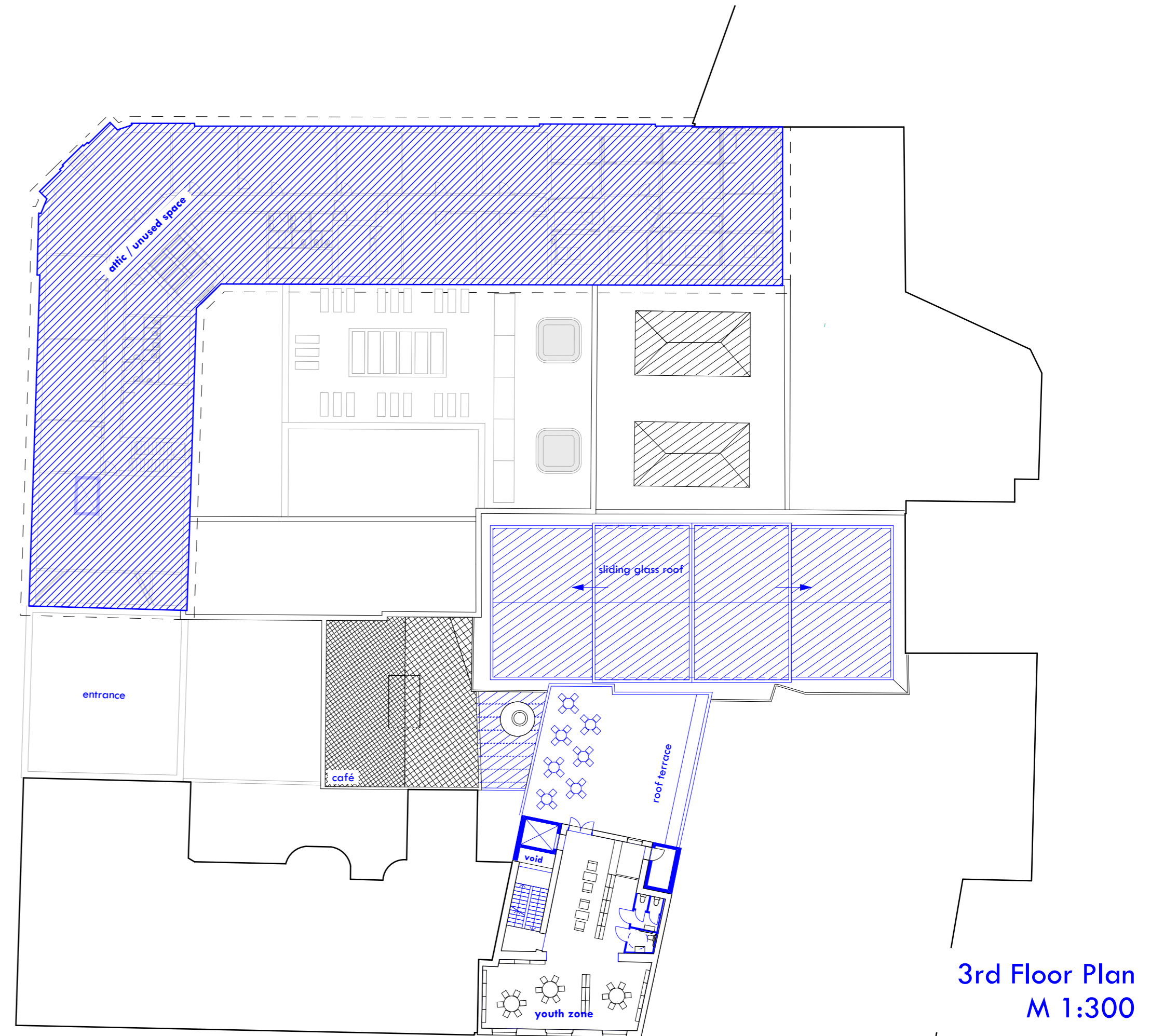
thematic courtyards

Kupelna street view

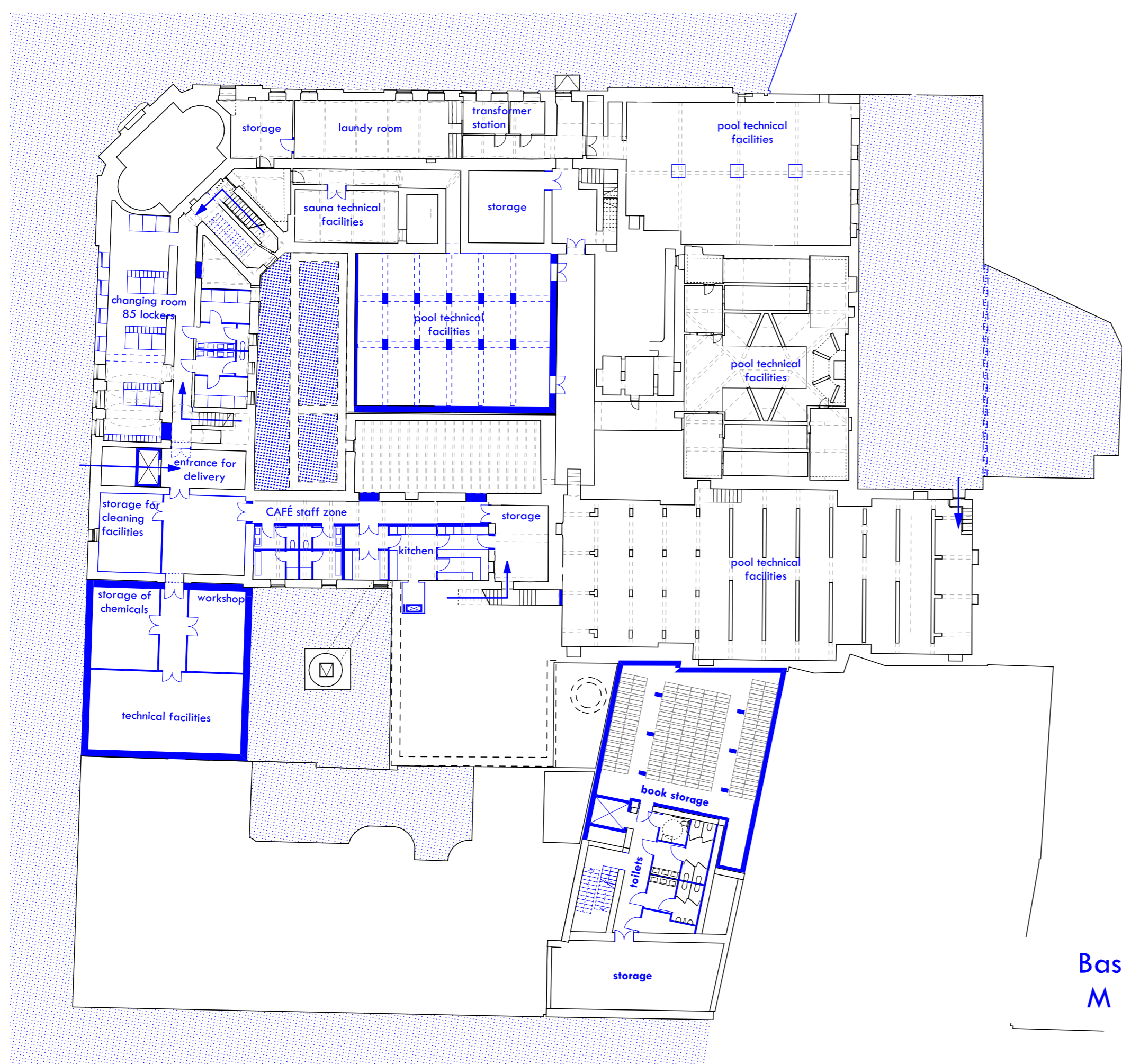




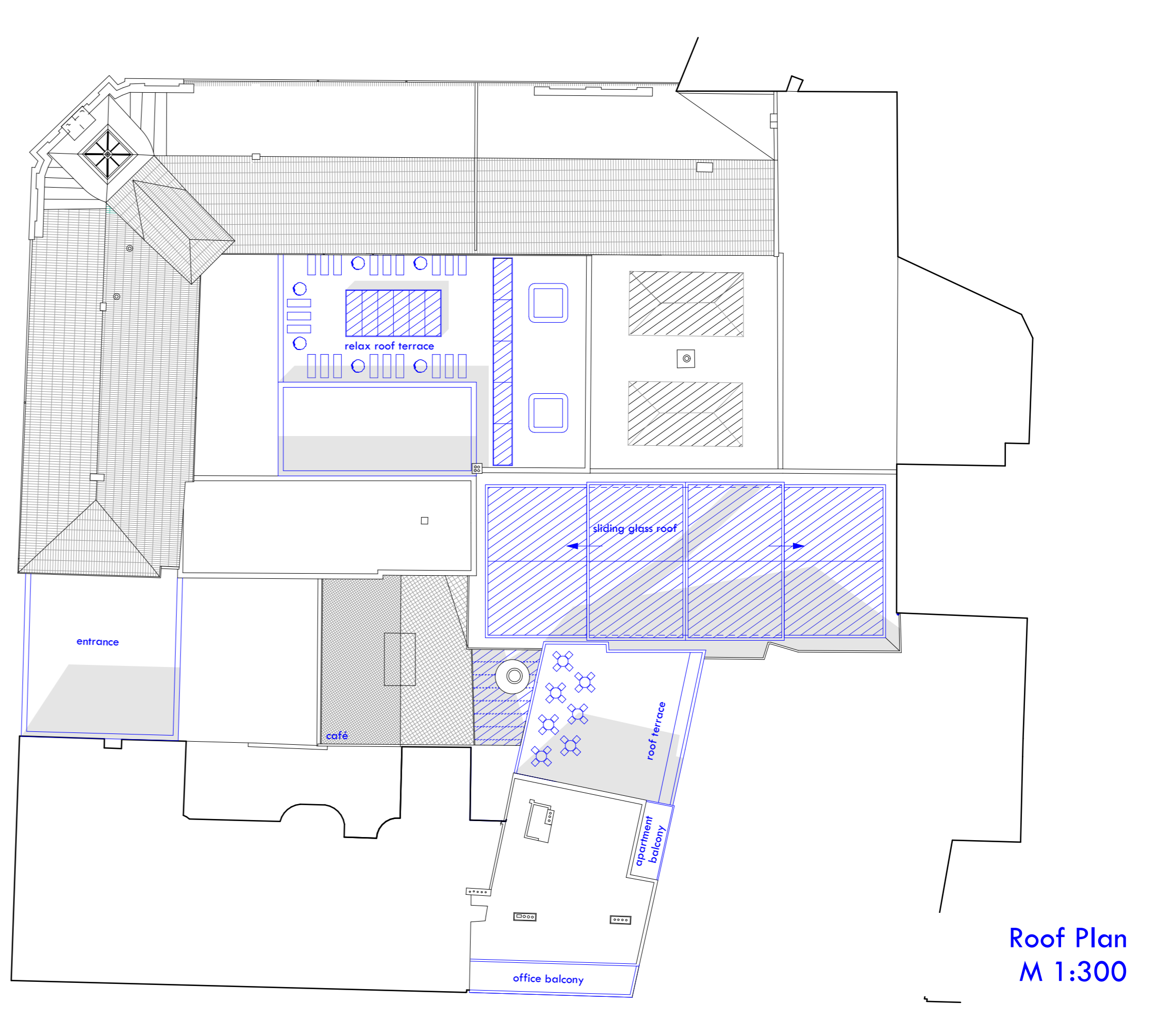
2nd Floor Plan
M 1:300



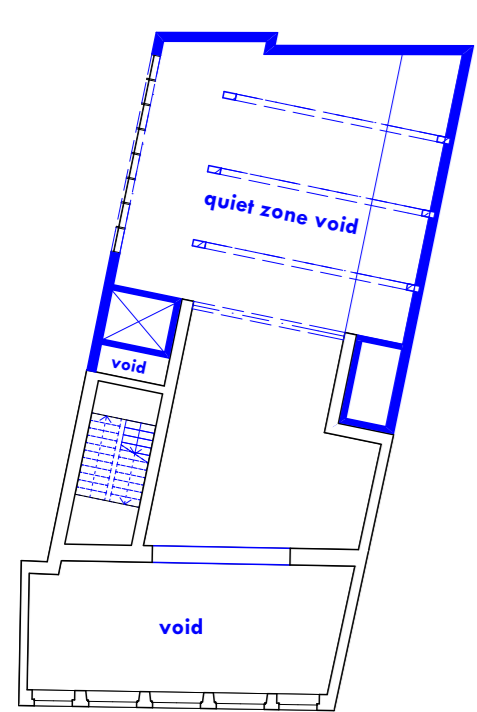
3rd Floor Plan
M 1:300



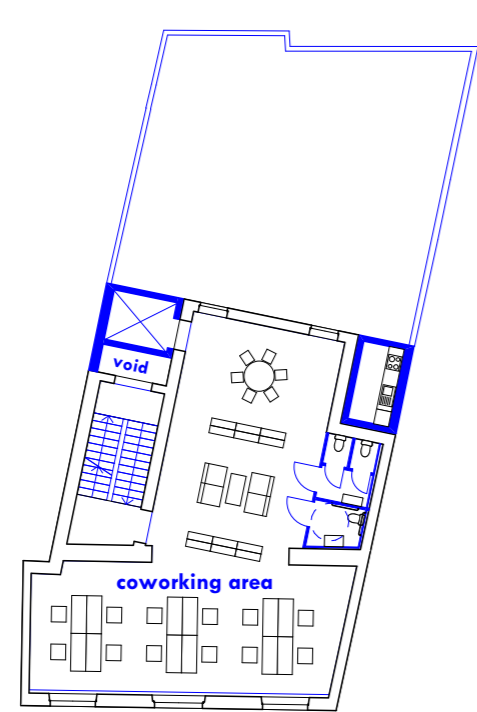
Basement
M 1:300



Roof Plan
M 1:300



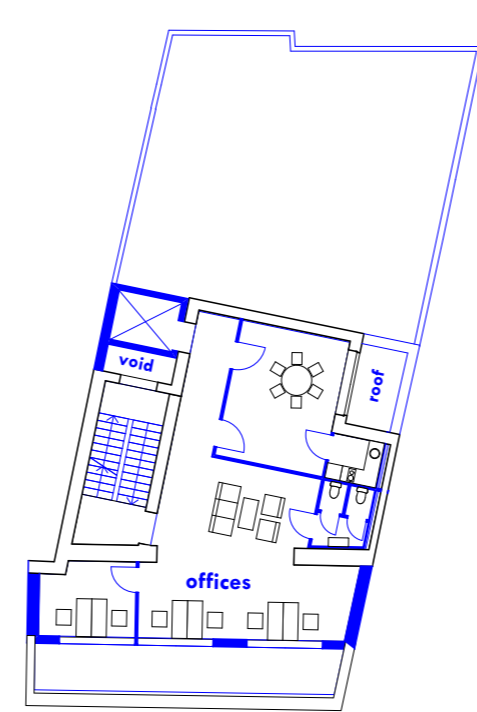
Library Void
2nd floor plan
M 1:300



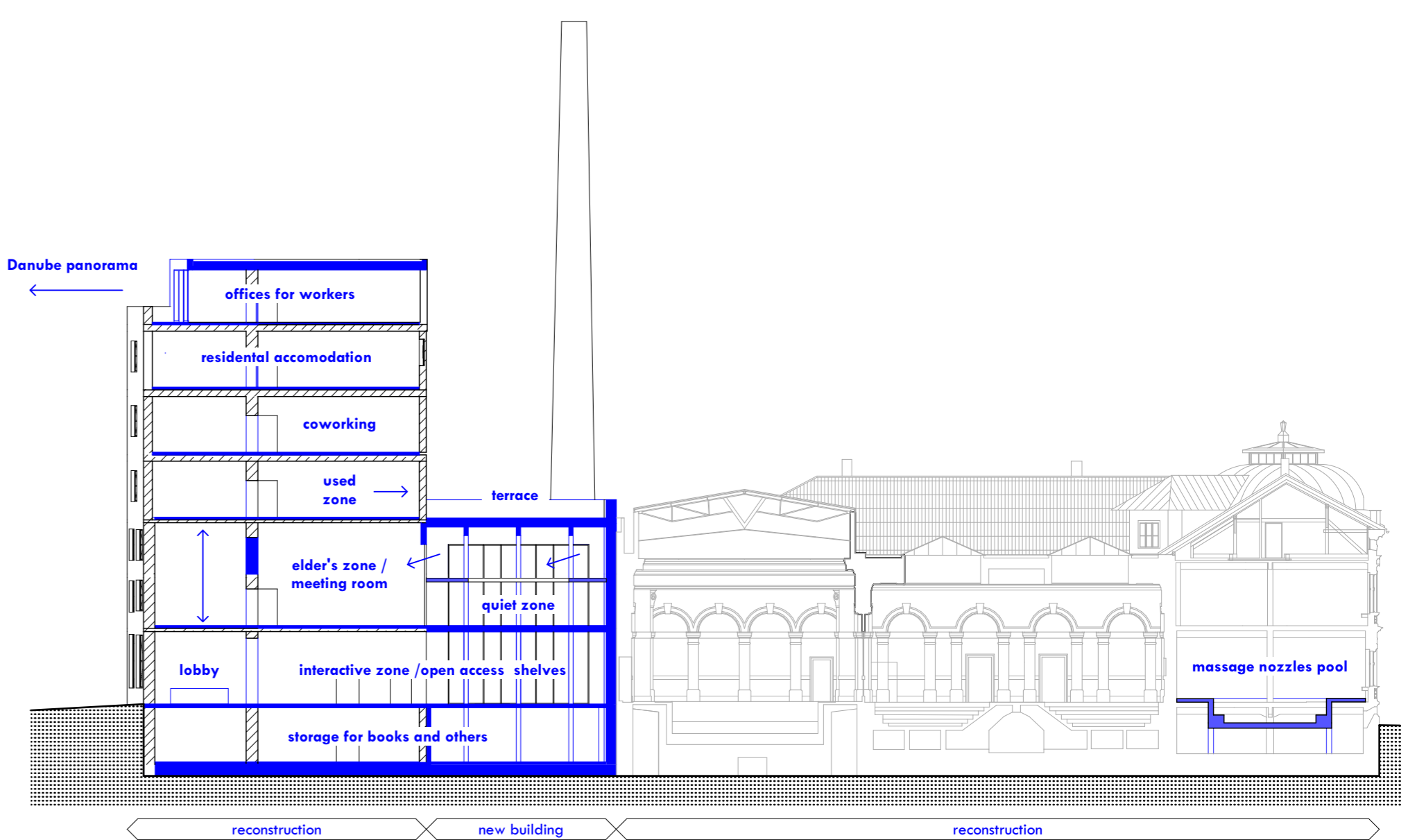
Library 5th floor plan
M 1:300



Library 6th floor plan
M 1:300



Library 7th floor plan
M 1:300



main entrance hall / lobby / café courtyard



view of the changing pools and the reconstructed courtyard

"Grössling"