

DEEP INTO THE TALE

among the stories, drops and trees

Water equals time and provides beauty with its double.
(J. Brodsky)

to immerse

I simply think that water is the image of time (J. Brodsky)

Reading books, walking through parks and diving into the water translocates us to another, different world - the world of imagination. Ideas, sensations and perceptions vary from the ones outside in the real world. Time is changed, emotions intensified. Merging the realm of water, plants and books, the building of the new city bath and library represents a threshold to the place of undefined rhythms. Entering the immersive tale, one is able to forget the troubles and open himself to the calm and yet playful experience. The very interlacement of various programs creates unexpected and meaningful interactions.

to sense

Water is a mysterious element - because of its structure. And it is very cinegenic; it transmits movement, depth, changes. Nothing is more beautiful than water.
(Tarkovskiy)

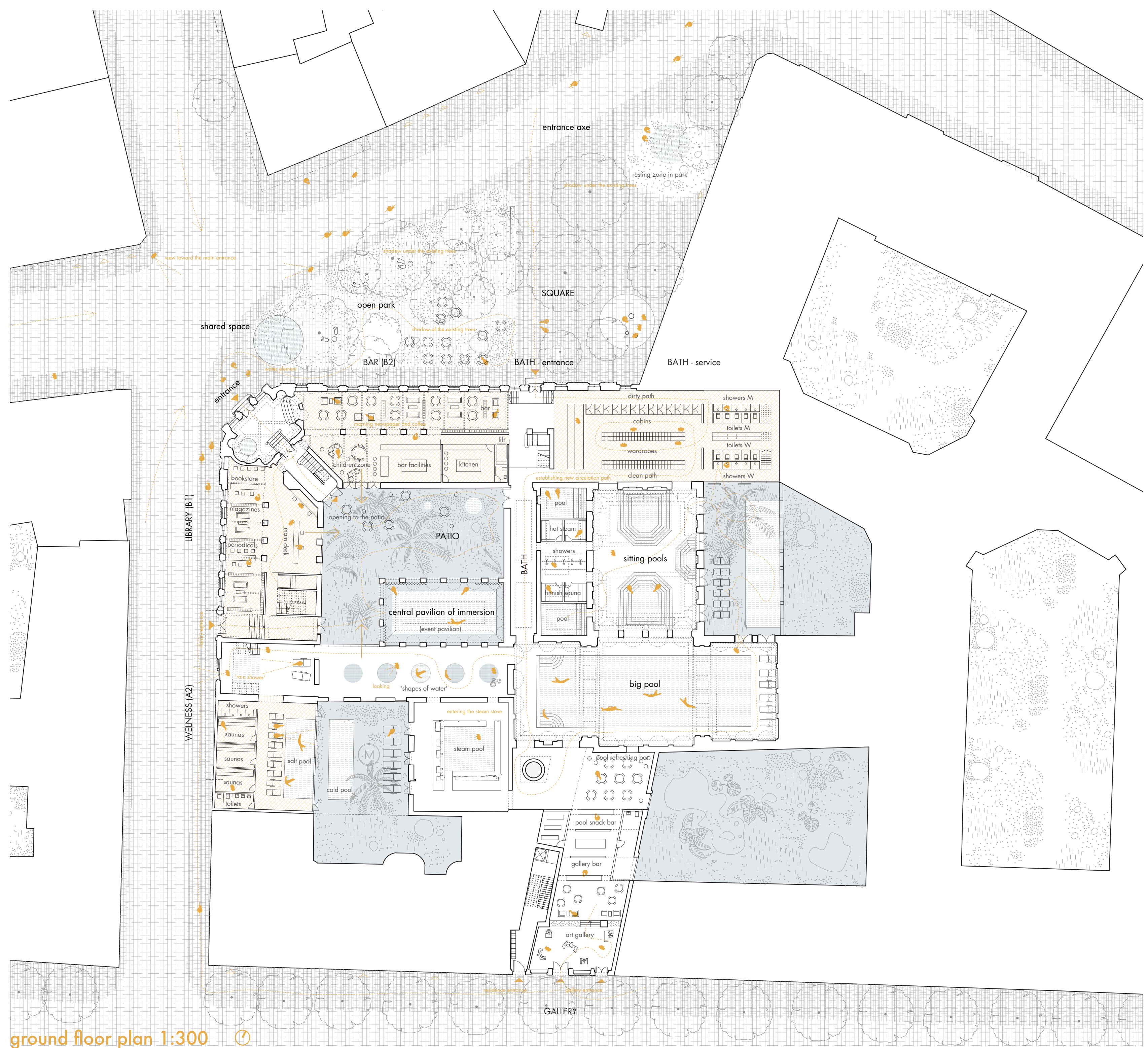
Presence of the elements that are inseparably related to the beauty enriches the city and provides an important dimension of a public space. The experience of unusual place enables the development of the sensibility, which could diffuse outside of the building and help to create a better world.

to free

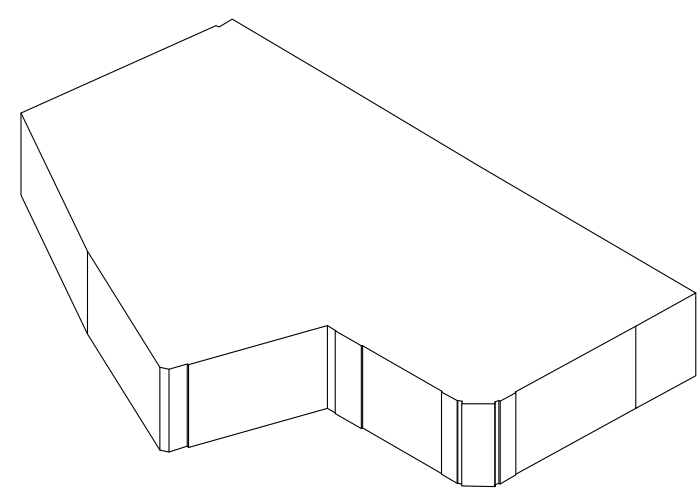
Year by year layers of life are covering pavements and walls, new structures are build over the old ones and existing beauty starts to be lost inside a hybrid and non legible structures.

Our idea is trying to free the beautiful existing structure of the Grössling bath by removing the spaces which were added later. The new pathway allows the visitors to move freely and circulate between the library and cafe, between the baths and the inner patios. Inner voids bring new light inside and connect the diverse spaces with each other. cafe becomes the library, library can also become a bookstore, park comes into the spa and the pavilion can become the place for the poem reading...spa is a fluent space moving through different ambiances in over different levels. The interior pathway connects the inner structure with the spaces around it in all three directions of the city.

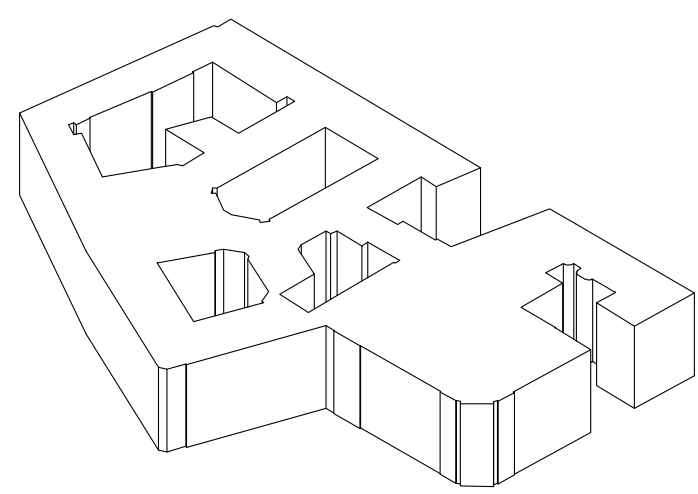
Inspiration: Maria Svarbova, Josif Brodsky, Mark Rothko, Andrei Tarkovsky.



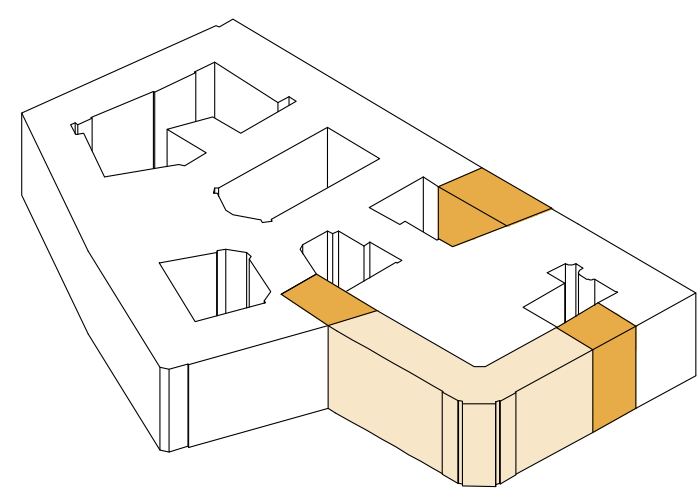
ground floor plan 1:300



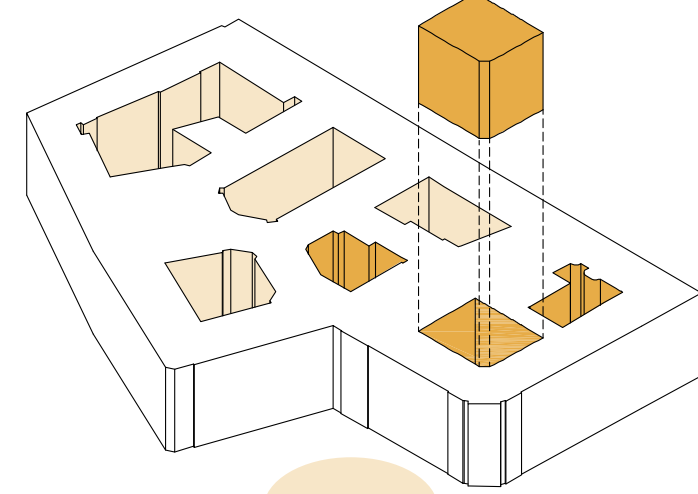
concept



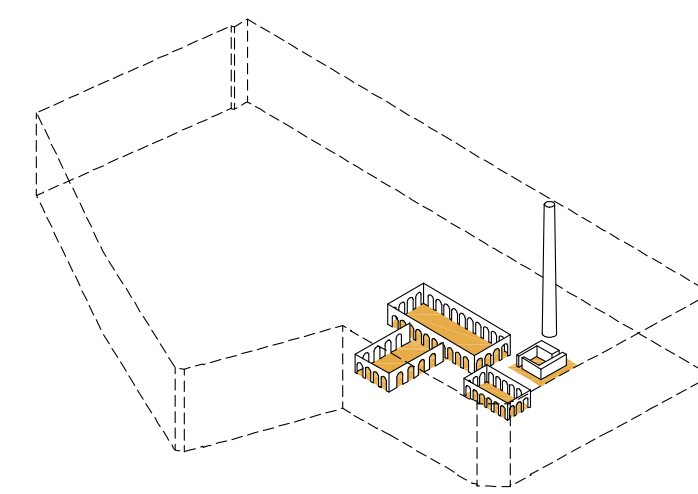
full block



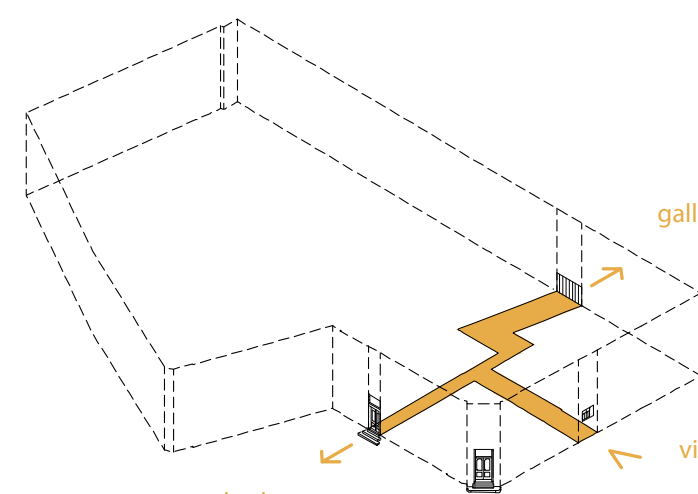
existing patios



defining the edge

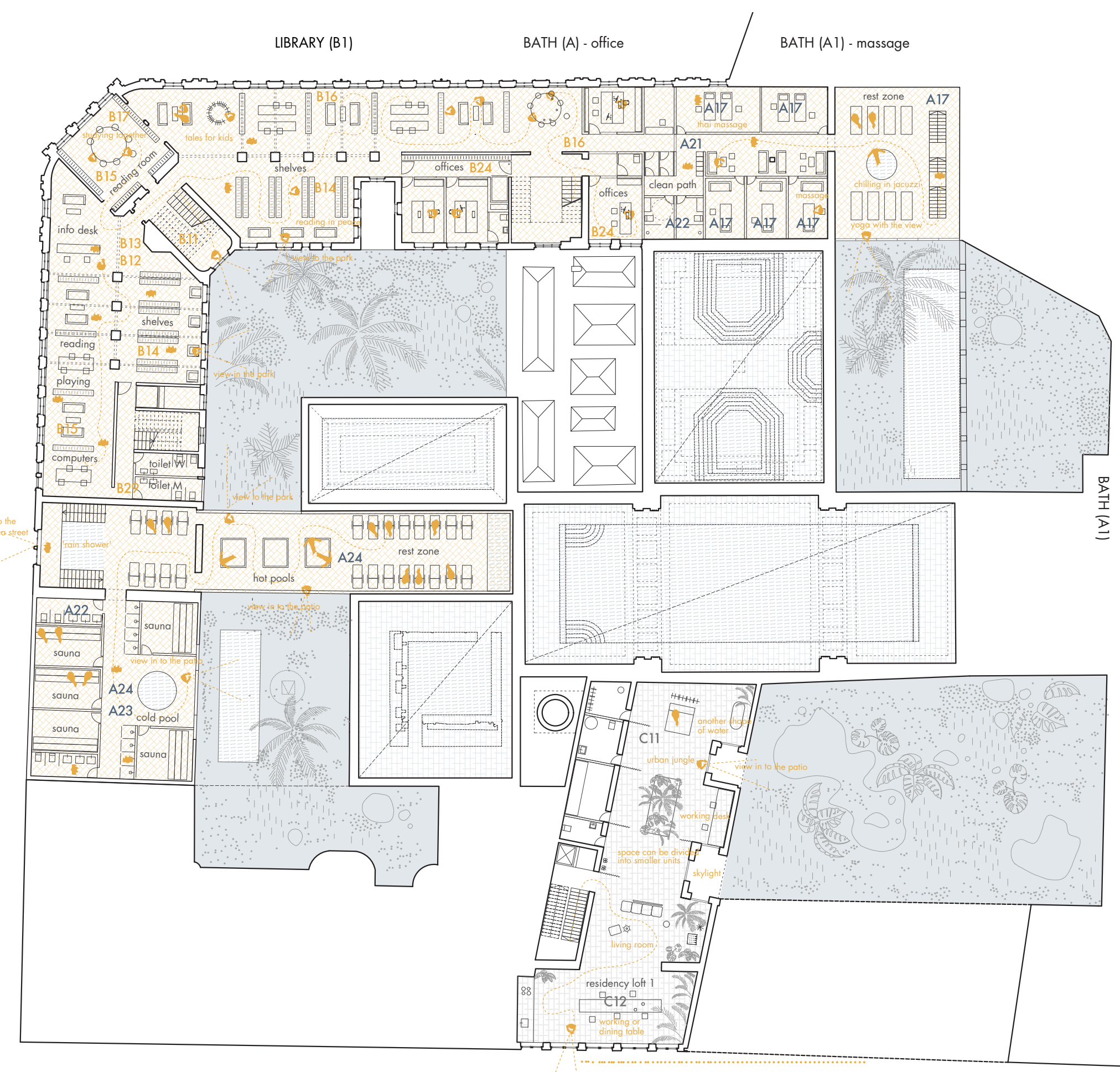


clearing the voids

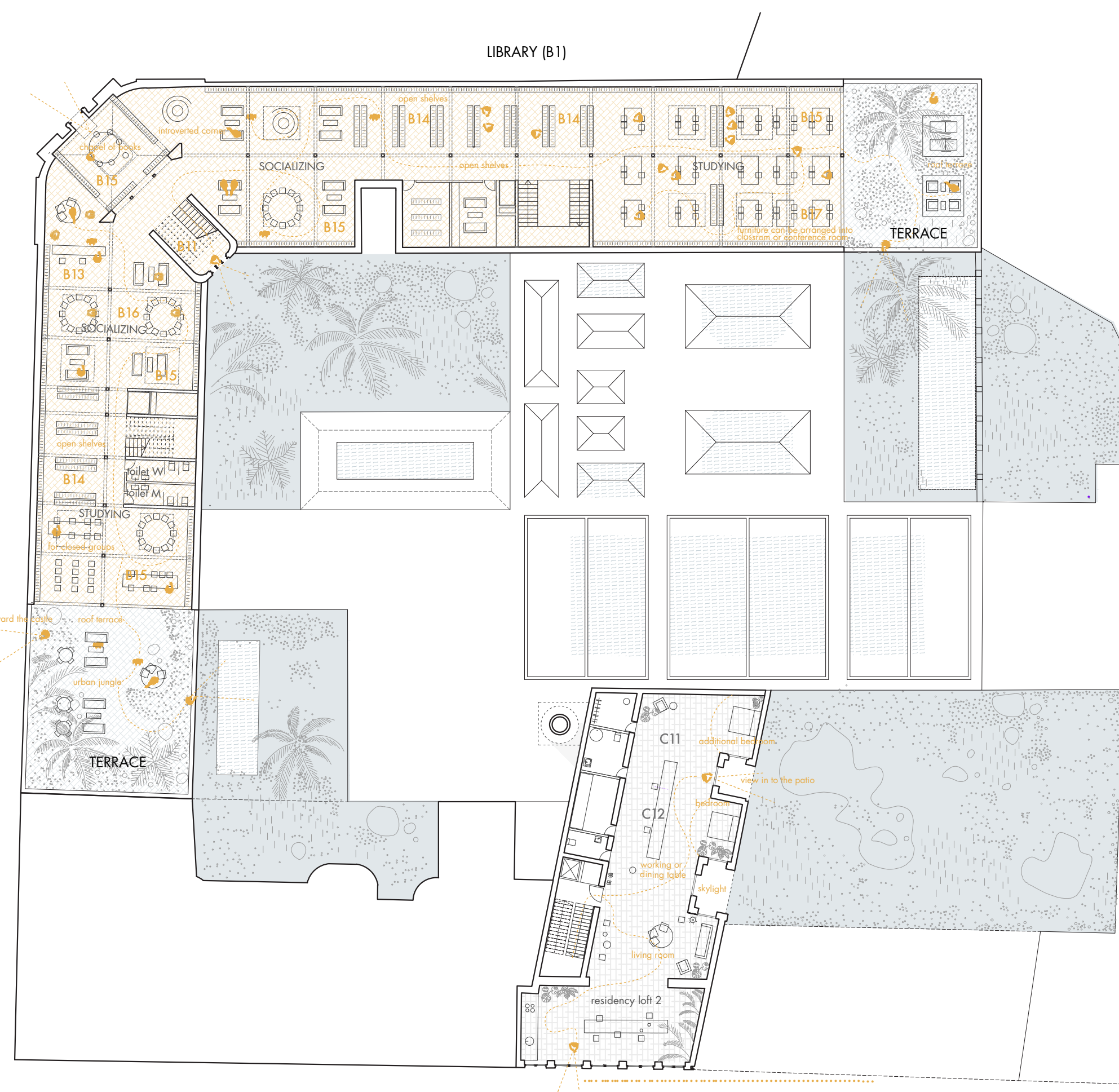


emphasizing historic rooms

connecting path
bath entrance
main entrance
gallery



first floor plan 1:300



second floor plan 1:300

A CITY BATH

A1 INTERACTIVE ZONE

- A11 entrance hall
- A12 changing rooms
- A13 sanitary facilities
- A14 existing pools
- A15 new pools
- A16 refreshments area (bar)
- A17 massages and therapy
- A18 administration
- A19 technological facilities

A2 RESTING ZONE

- A21 changing rooms
- A22 sanitary facilities
- A23 saunas
- A24 ambient pool
- A25 salt pool

B CITY LIBRARY

B1 LIBRARY

- B11 entrance
- B12 selfcheck
- B13 self-service machines
- B14 shelves
- B15 workshop room
- B16 socialising room
- B17 event space

B2 CAFE

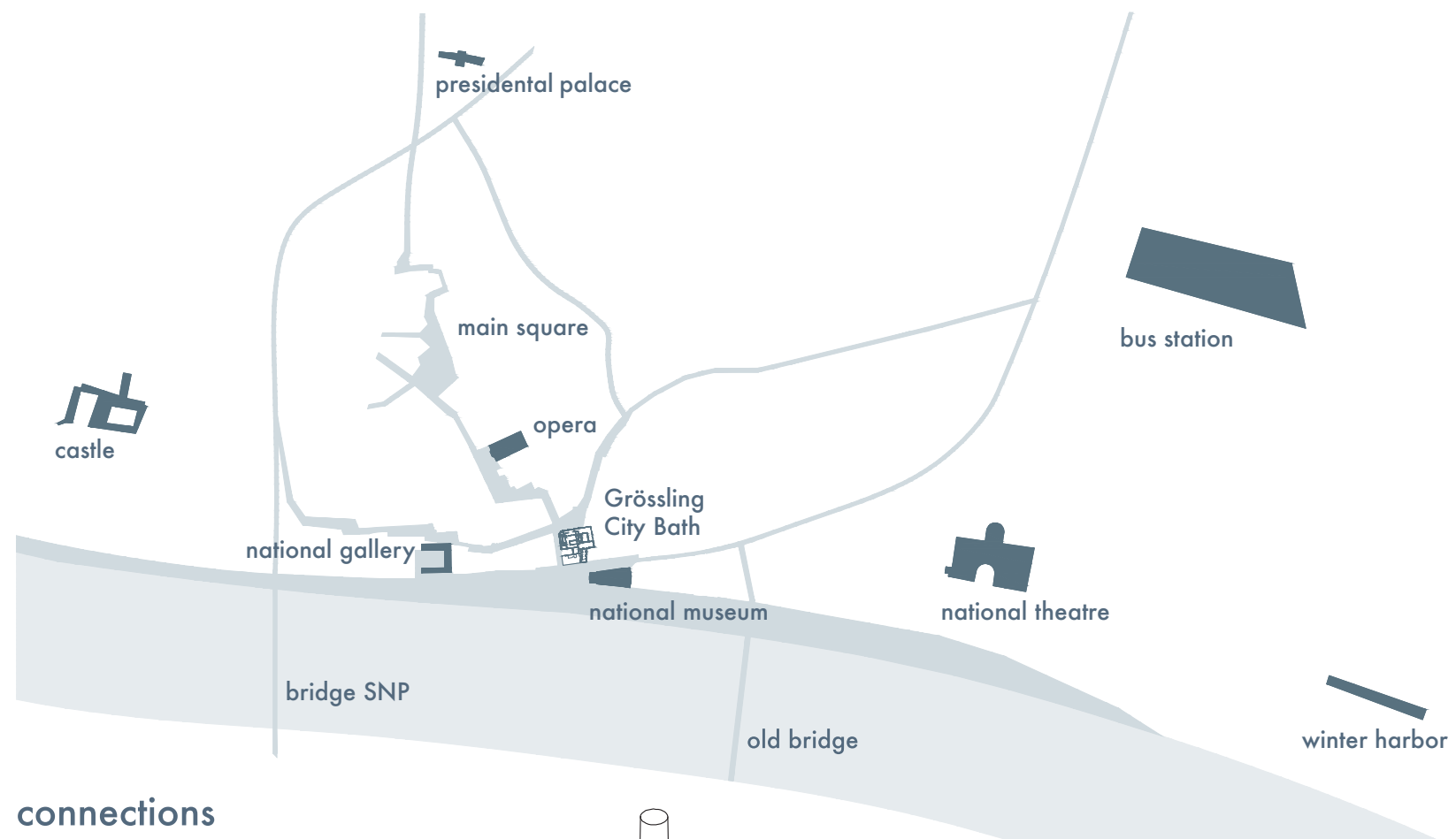
- B21 bar
- B22 facilities for meals preparation
- B23 storage
- B24 facilities for employees
- B25 kid's zone
- B26 new books
- B27 reading space
- B28 tables
- B29 sanitary facilities

C RESIDENCY

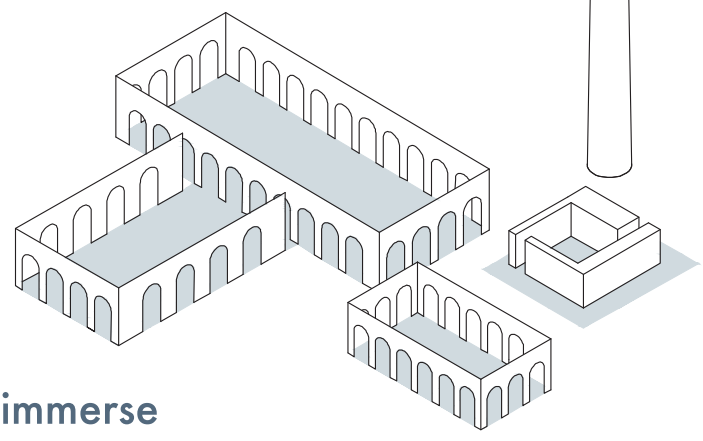
C1 RESIDENCY

- C11 accommodation
- C12 workspace
- C13 gallery





connections
city bath is located in the centre of the old town of Bratislava, and is very close to important cultural program



shapes of water



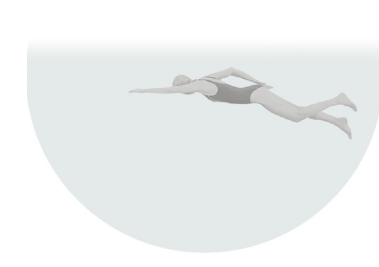
'immersing in the steam'



standing under the water drops



'stepping into the water'



'diving in the water'



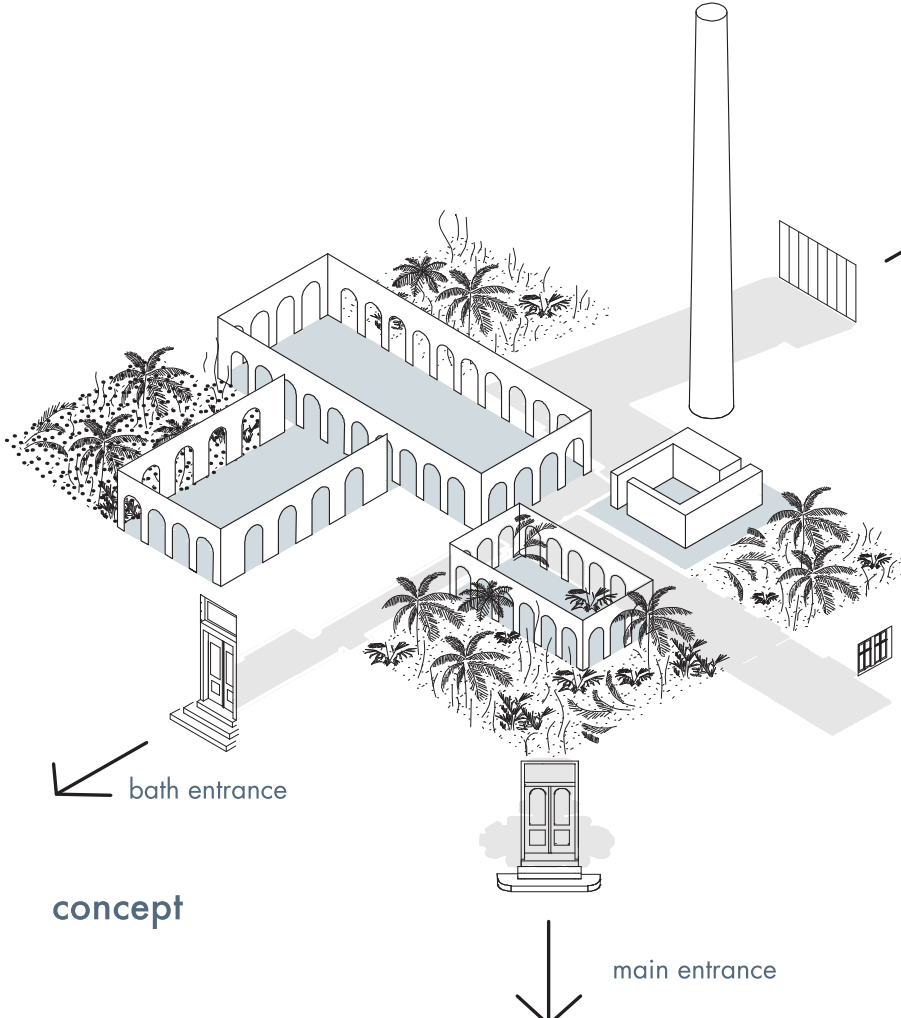
'looking at the water'

to immerse
preserving and exposing important historic rooms



to sense
establishment of green open patios

to free
connecting different sides of the city with the path through the building



C1 RESIDENCY

B1 LIBRARY

C1 RESIDENCY

A1 INTERACTIVE ZONE

A2 RESTING ZONE

B1 LIBRARY

A1 INTERACTIVE ZONE

A2 RESTING ZONE

B2 CAFE

B1 LIBRARY

A1 INTERACTIVE ZONE

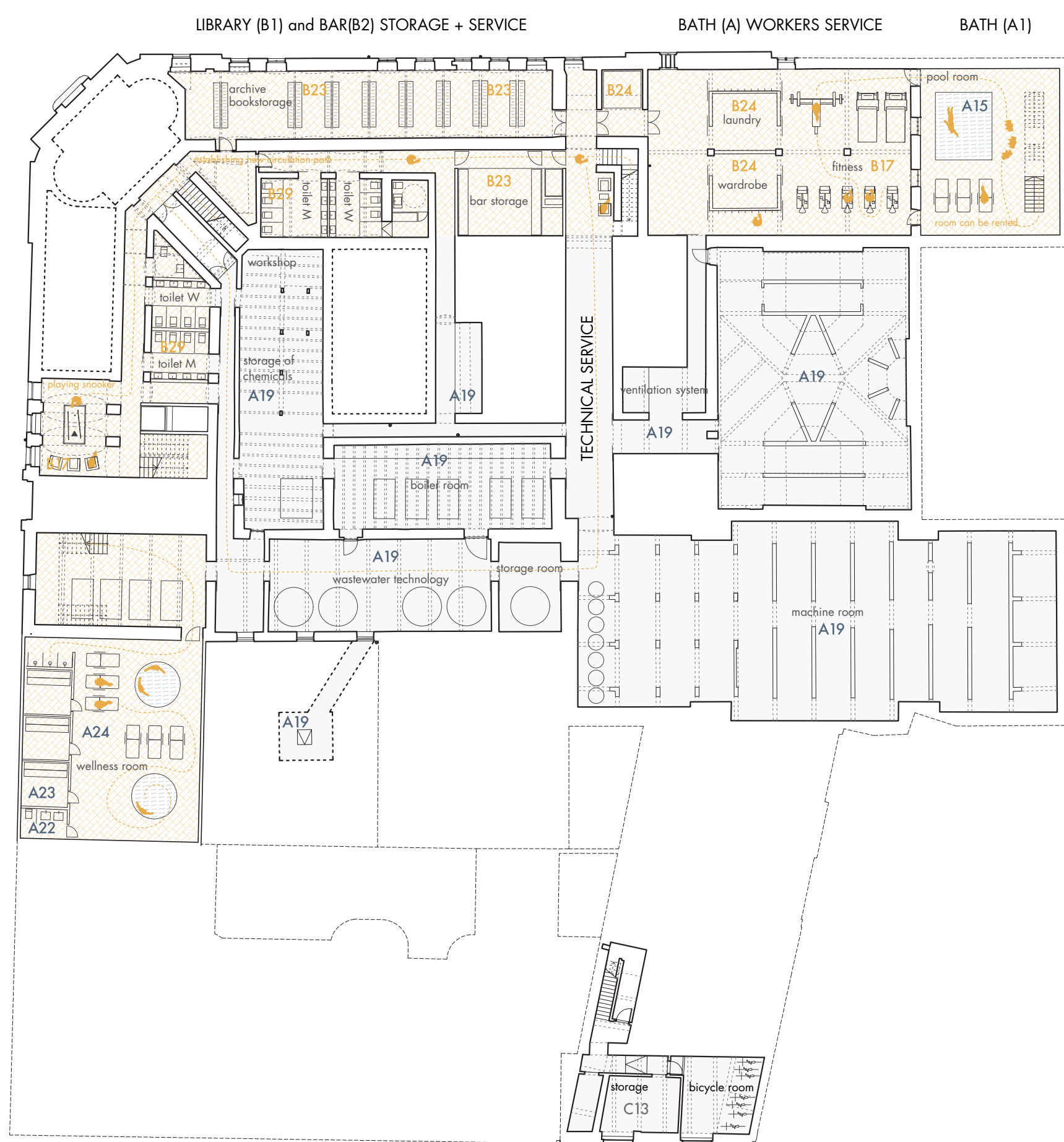
A2 RESTING ZONE

A2 RESTING ZONE

B1 LIBRARY

BATH (A) WORKERS SERVICE

TECHNICAL SERVICE

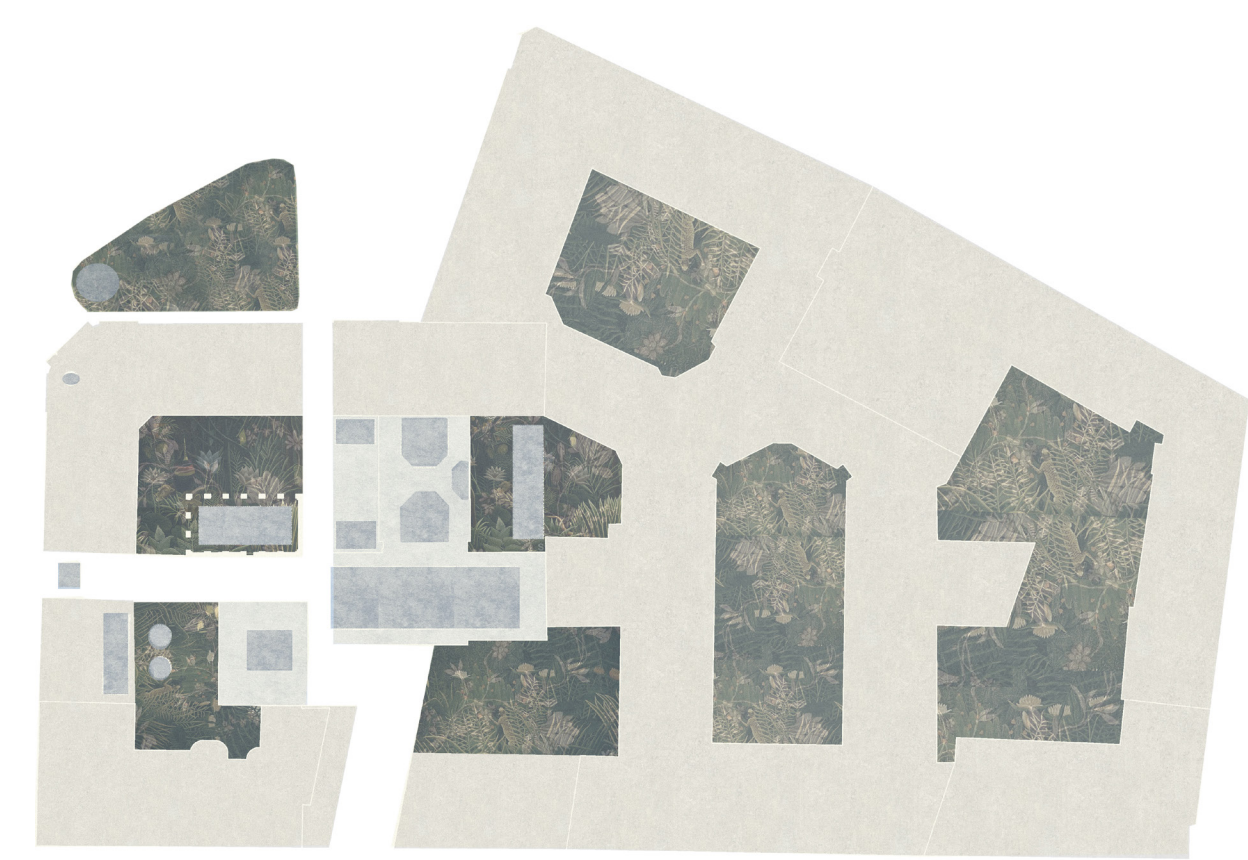


basement plan 1:300

RESIDENCY STORAGE



roof plan 1:300



free the space
INSIDE
prostor
prostosti
svobode



central pavilion of immersion



immersion : pavilion as meditation room



immersion : pavilion as a pool



immersion : pavilion as stage



'Water equals time and provides beauty with its double.'



pavilion as a pool



pavilion as a meditation room



pavilion as a stage

Strong atmospheres of the past can inspire us deeply, they invite us to enter stories and immerse into water, they move us from banality of the daily life to clean and purify our spirits and come closer to what we really are.

