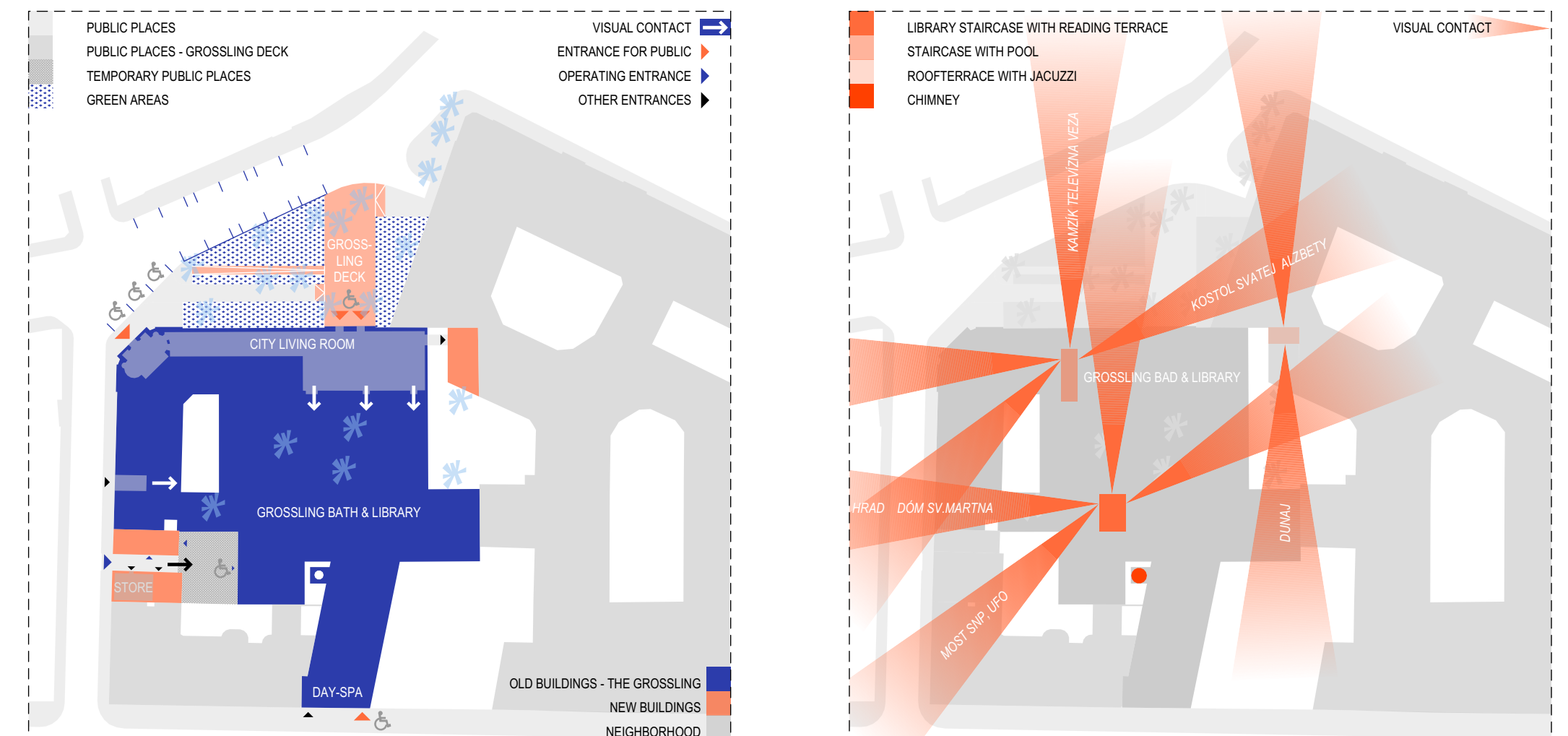
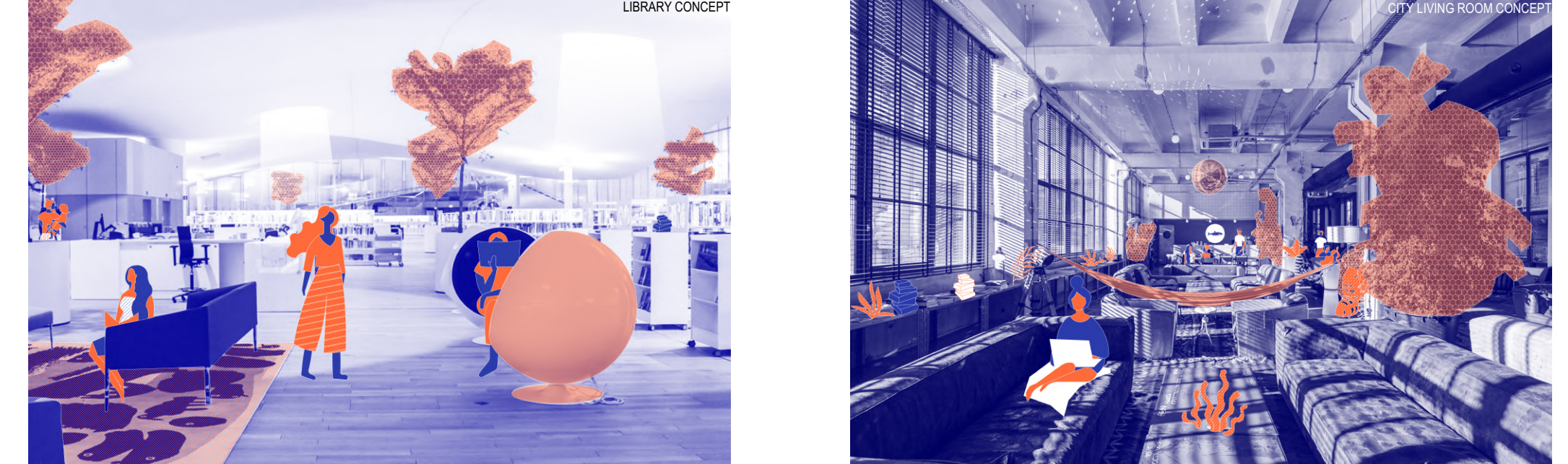


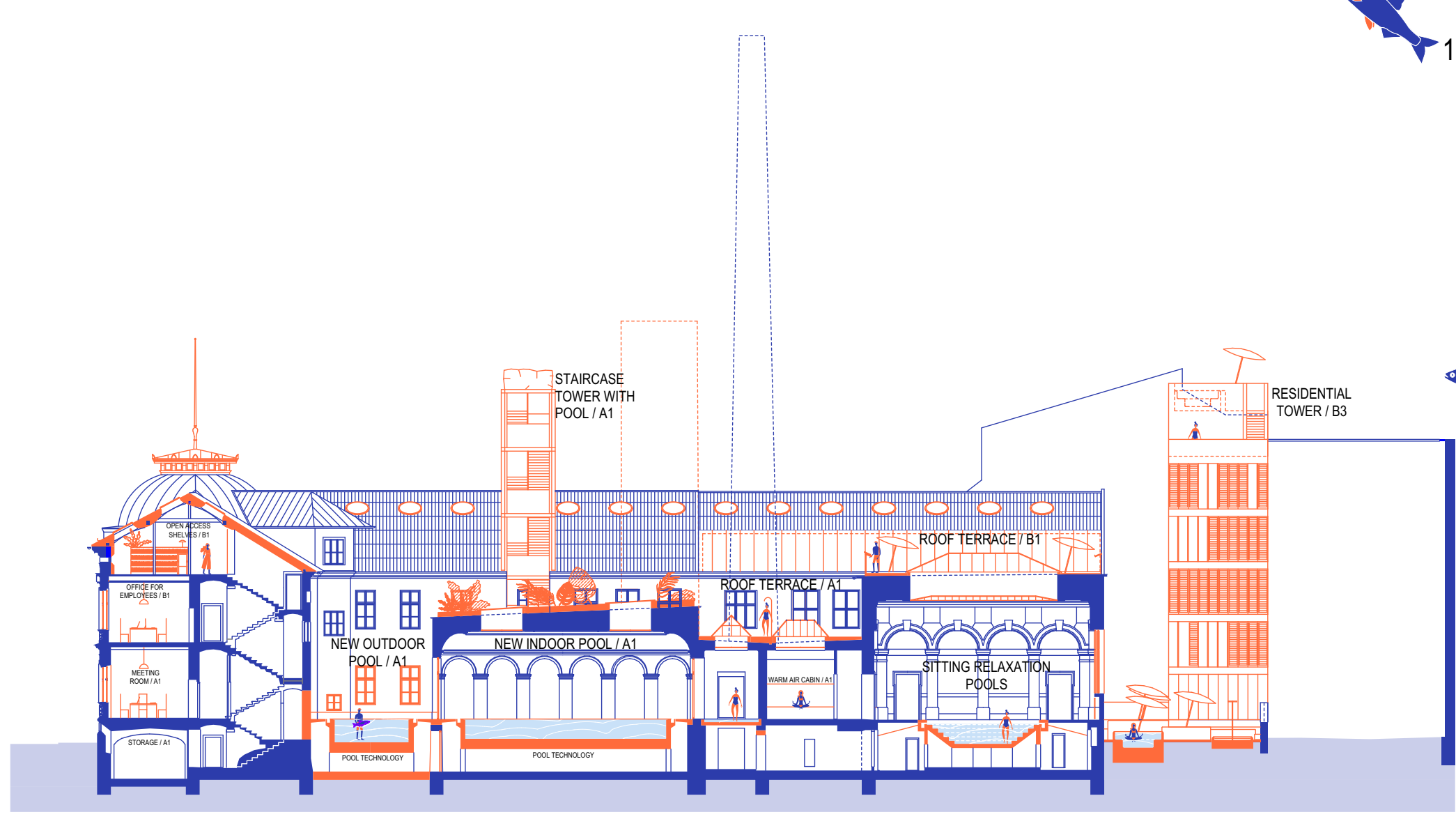
The spa and the library are two truly urban functions that carried secrecy for a long time, it was the world of the insiders. Since the world became open, culture and body culture became a natural part of our lives. Yet, something of the mystery remains, and that's what makes the meeting of the two functions really exciting: the bather, the reader, and even a passerby will have the chance to look into this extraordinary facility. Our goal is to make the building a link between different cultures as well as the city center and the Danube. We want to enrich the spatial and stylistic richness of several construction periods with a new, contemporary layer, so functional and visual cohesion can develop between the old parts of the building with new functions, so visitors and passersby can have a new and hand to hand contact with the city. The design area is almost completely built-in, mostly with monumentally protected buildings. Therefore, contemporary architecture focuses on the "remaining" area - the current courtyards: the lonely vertical of the chimney is supplemented by two staircase towers which are lower than the height of the chimney. They are also functional, serving the spa and providing connections within the building. One leads from the spa's sun terrace to a small pool - bathing over the city! The other one - from the roof terrace of the library - is a library staircase that leads to a lookout-reading balcony. From the two towers we can see the castle (Bratislavský hrad), the Duomo (Dóm sv. Martina) and the UFO bridge, and we can also look into the courtyards and admire the fifth facade (roofs) of the city. The elevators required for people with reduced mobility will also be placed in the courtyards, or into a stairwell. Today we can only rejoice to the trees in the triangular square in front of the old bath building. The city's car traffic is high in Mederla street. Due to the deeper connection to the already elevated level of the spa, as well as the lifting away from the traffic, we have designed a large deck that can function as a terrace on a sunny day, and can be completed with a pop-up bar. While we will preserve the patinated yellow ceramic cladding, a new and city-friendly space will be created.



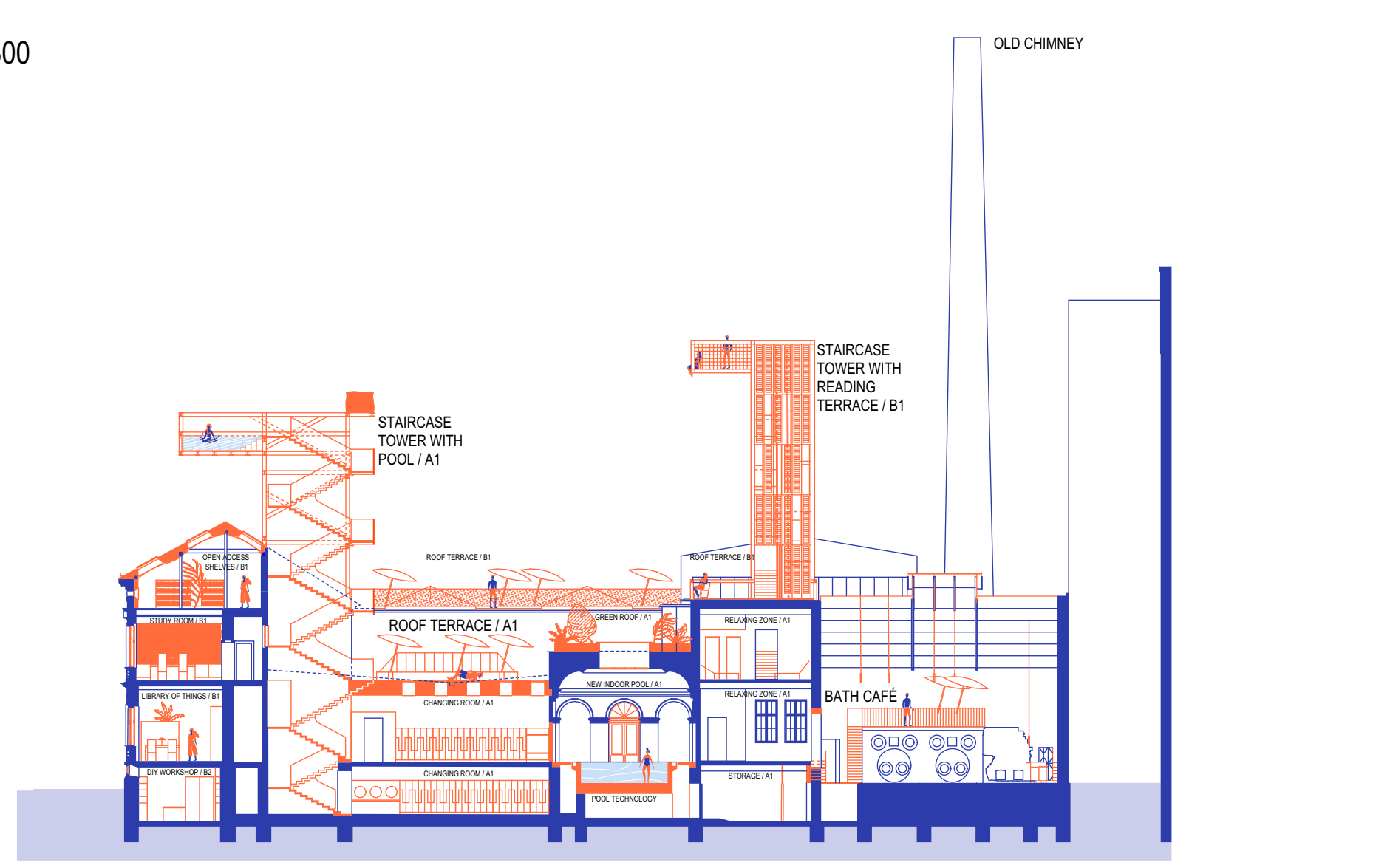
In our opinion, the entrance of the building should not be a traditional door. Openness can only be served by multiple entrances. In addition to the original corner entrance of the spa, we have planned a visitor entrance to the two axes in the corner of the park, which have not been used architecturally so far, and can be accessed by people with reduced mobility. The ground floor tract - between the two entrances - which overlooks to the park, is the common urban space of the two building functions (the "living room" - the spa cash desk, sporting goods store, library of things, and of course the cafe will be here. The spa opens from here and the old staircase leads up to the library. We can peek into the spa in several places. The basement part, connected to the interactive zone will give home to restrooms, a communal laundry room, a diy workshop and a fitness area with a small bar. The entralling bath will be reusable in its old splendor - considering the former use of space to a great extent. Therefore, the program's new pool will be placed in the space of the former women's swimming pool. Over time, the interior facade of the corner house has been treated badly - we are freeing it up by creating another inner courtyard for a new pool (a connection will be created between the two pools). At the top of the dressing room - connected to another existing roof, a sun terrace will be created. The courtyard next to the three-pool spa will provide a jacuzzi bathing experience, a part of it will become a deep courtyard connected to the fitness. In addition to the swimming pools, there are saunas, steam baths, showers, lounges and resting rooms. The pools are accessible via a foot wash. On the lower levels of the Danube bank house we have created the day spa area, which also has an outdoor saltwater pool and a roof bar. This part will have a separate entrance, but will also be accessible from the spa. Under the saltwater pool, the building needs structural reinforcement. Because of the special experience, we think this extra cost is reasonable. We will preserve the surreal mechanical ruins of the former boiler house and the spa cafe will be on top. Free-shelf, thematic and multifunctional areas alternate the library's help/check points in each level. The corner halls of the old corner house will also be accessible from the stairwell of the former bath from time to time. The attic, preserved as much as possible in its structure, will receive new, innovative roof lighting. The library also has reading terraces and lookouts. On the roof terrace, the reader can hang his foot in a narrow pool. The operating areas are available from the Kupelna street. The operating courtyard can occasionally be an urban space. We open the former gate of the house to walkers of the city to see the new courtyard of the spa. We designed a freight elevator in the former air courtyard of the expansion built in 1930, which can be used to serve the spa and the library. The Kupelna street's wing will contain the spa's non-public spaces in the lower, and the library's in the upper level. In the basement, we placed water engineering, mechanical spaces, storage rooms and changing rooms served by an elevator. We recommend building a residential house with a separate entrance next to the huge firewall of the operating courtyard. It is not included in the program but could help finance the project. There are areas for rent under the apartments. We designed the guest residential apartments with roof terrace and jacuzzi in the corner of the jacuzzi courtyard. These areas will be available 7/24 - the areas of the library-spa-cafe shop will be closed by lattice after the closing time of the cafe. The building will mostly be accessible by people with reduced mobility. The building engineering is economically friendly, with solar panels and tiles, heat pumps and rain water collection.



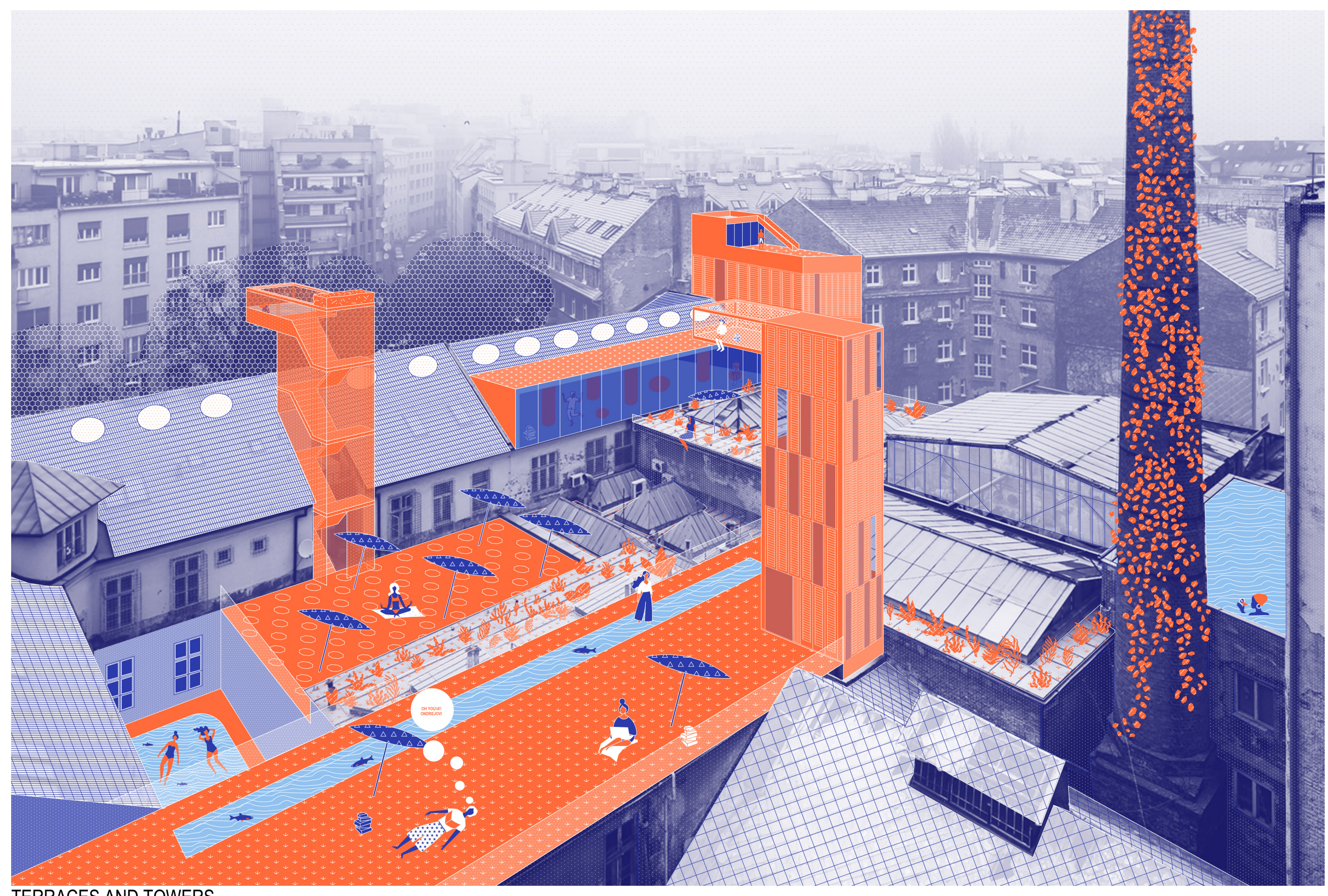
1ST FLOOR PLAN / SITE PLAN / SITUÁCIA S 1NP / M 1:300



LONGITUDINAL SECTION / SEKCIA / M 1:300



CROSS SECTION / SEKCIA / M 1:300



TERRACES AND TOWERS



VIEWS FROM THE TOWERS



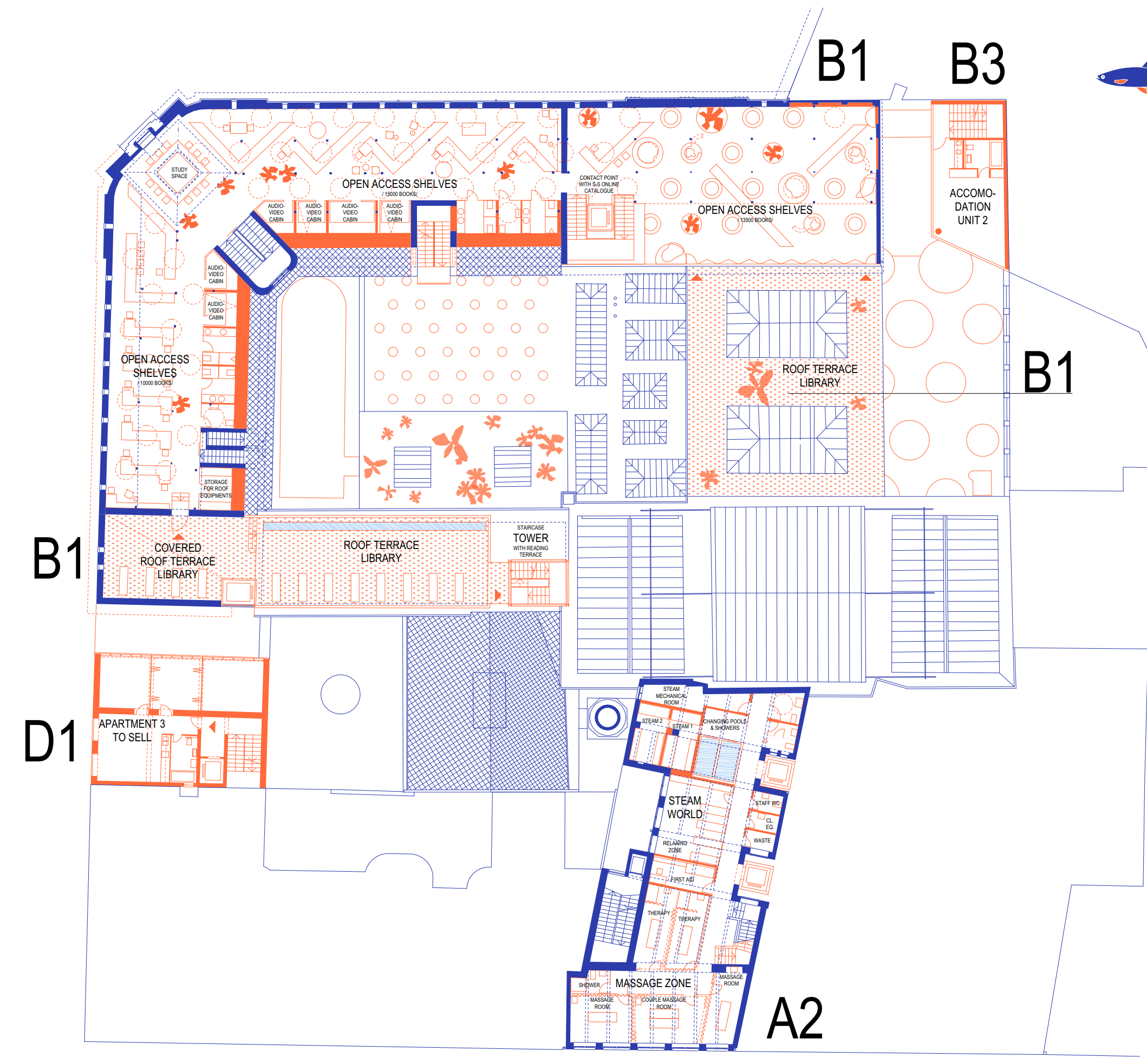
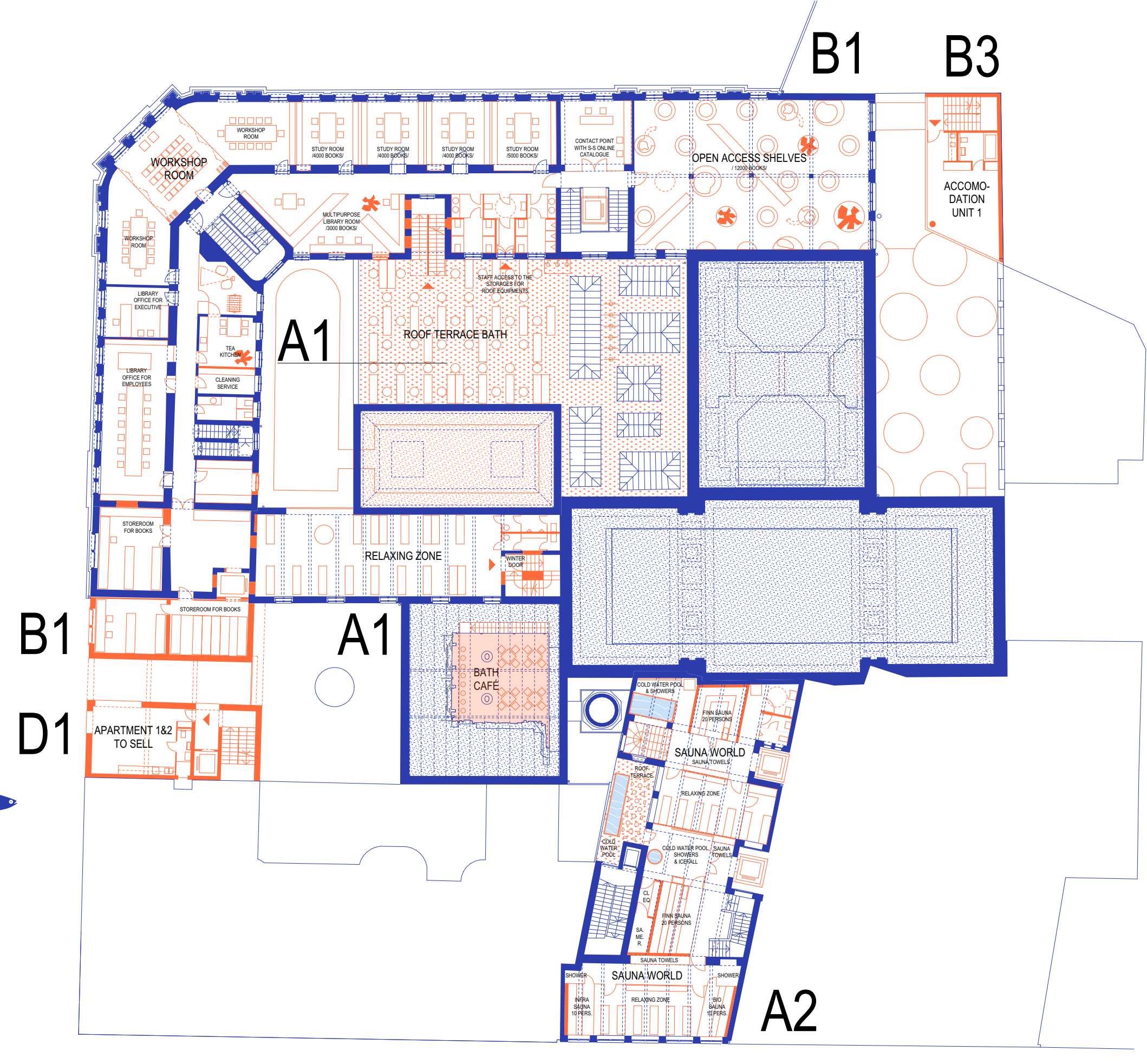
BRATISLAVA - CITY OF TOWERS

GRÖSSLING



BASEMENT / PODORYS 1PP / M 1:300

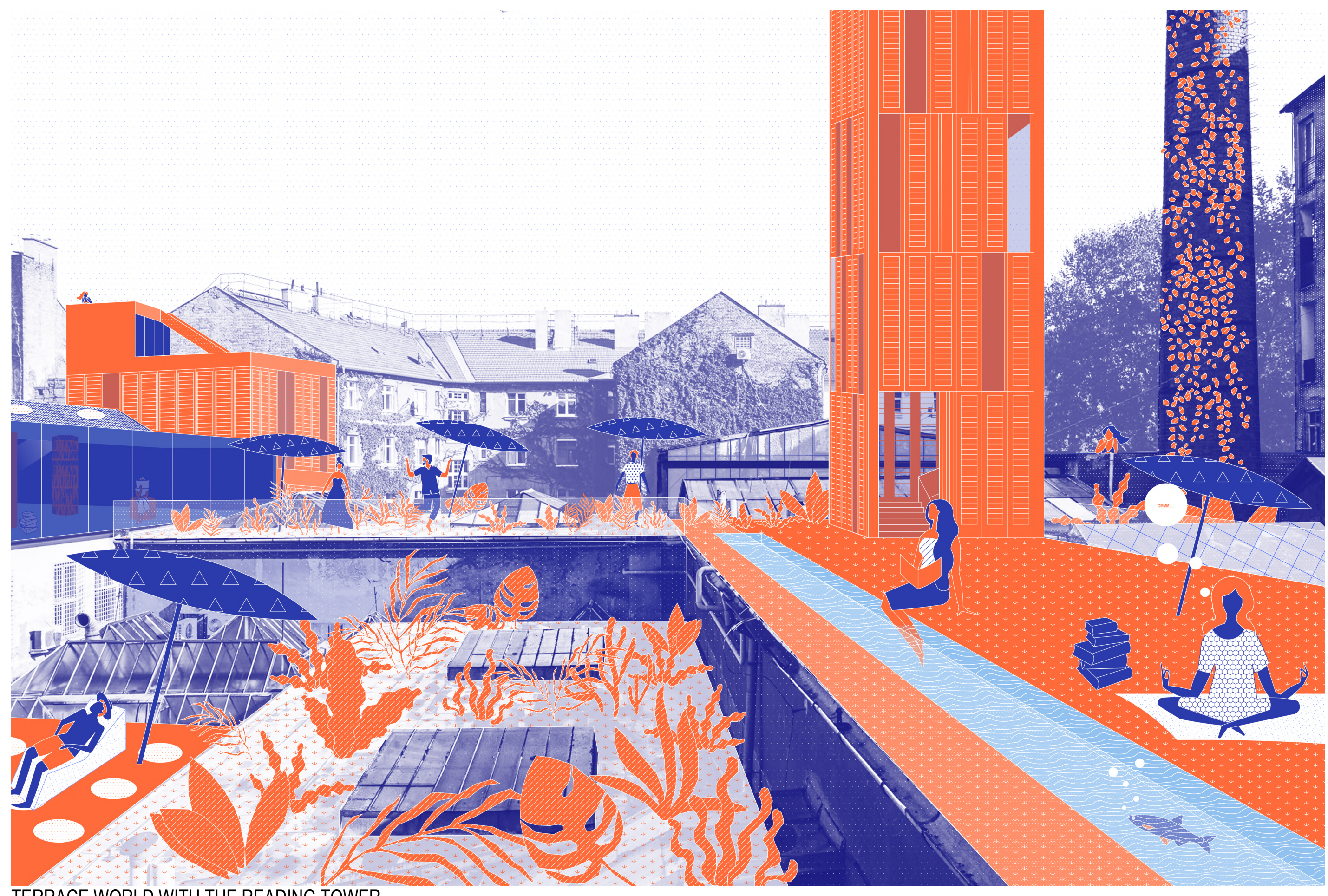
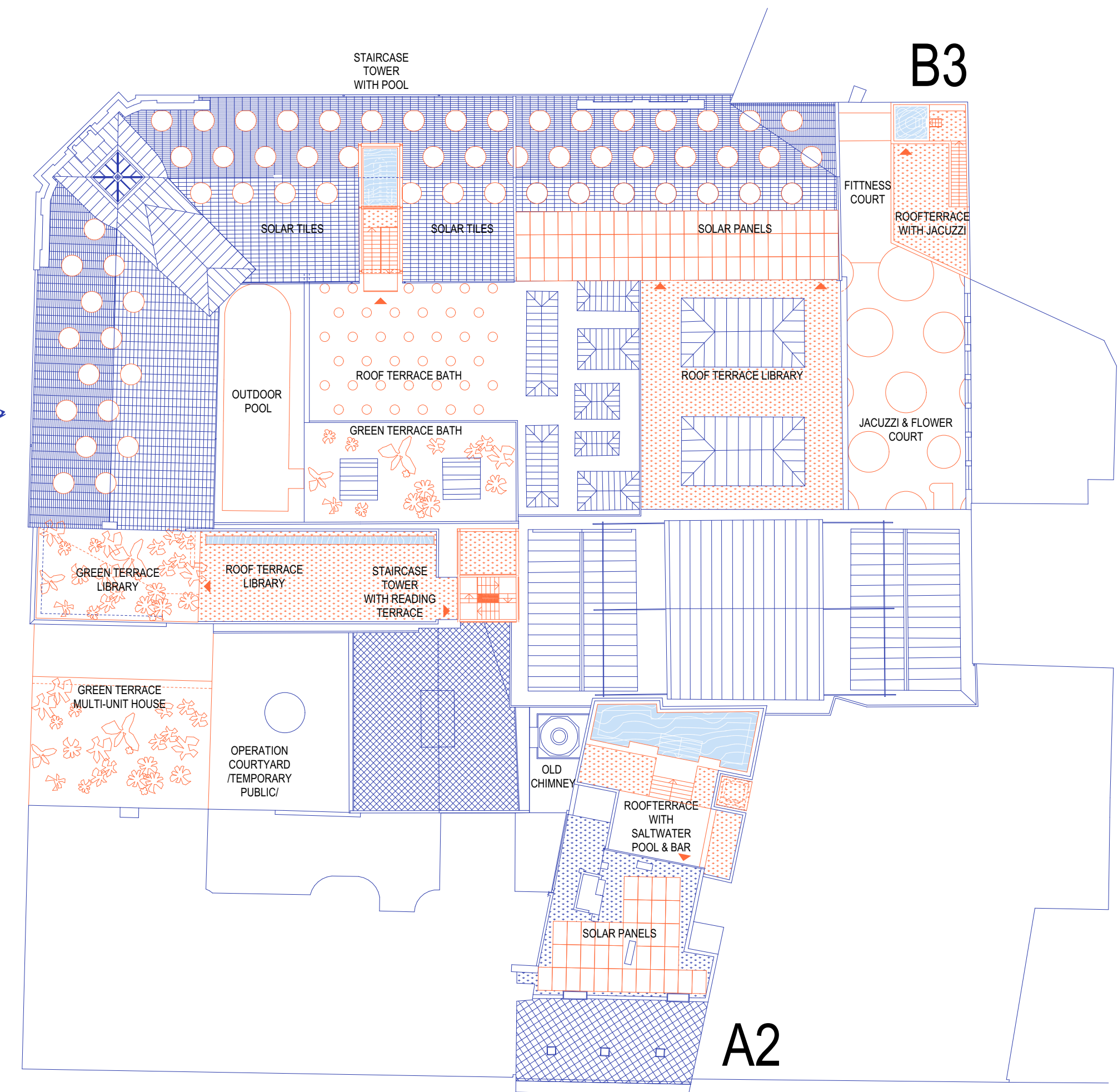
2ND FLOOR PLAN / PODORYS 2NP / M 1:300



3RD FLOOR PLAN / PODORYS 3NP / M 1:300

ROOF PLAN / PODORYS STRECHY / M 1:300

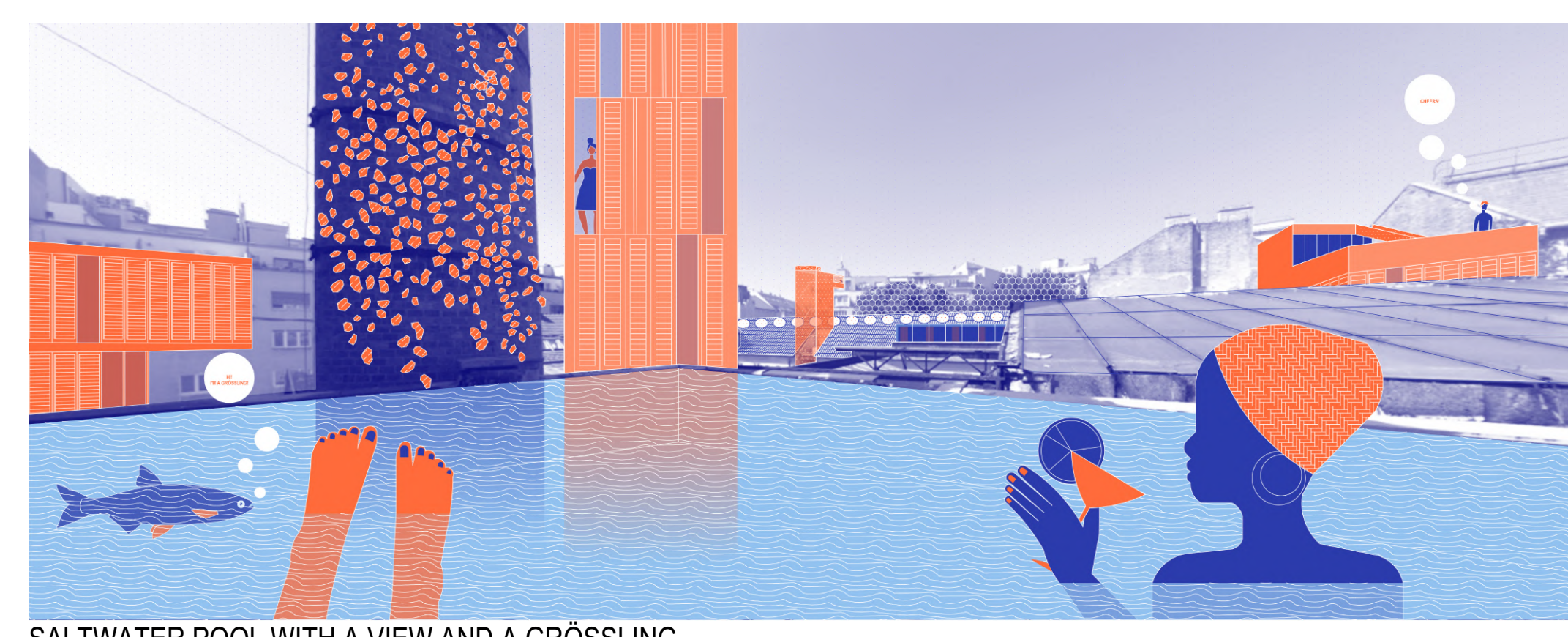
4TH FLOOR PLAN / PODORYS 4NP / M 1:300



TERRACE WORLD WITH THE READING TOWER



THE NEW PARK AND GRÖSSLING DECK WITH THE OLD ENTRANCE



SALTWATER POOL WITH A VIEW AND A GRÖSSLING

GRÖSSLING