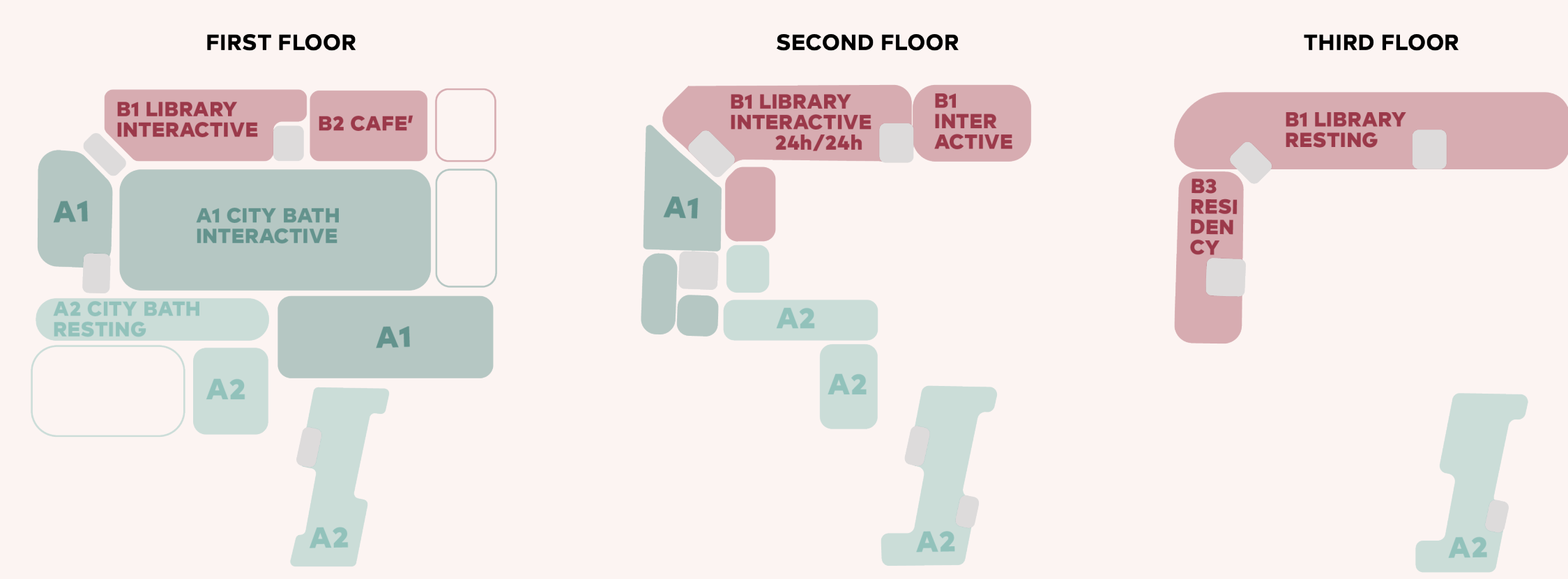


GRÖSSLING CITY BATH

an oldnew community centre



- | | | | |
|--|---|---|--|
| <p>A1 CITY BATH - interactive zone</p> <ul style="list-style-type: none"> A01. 1st Entrance Hall - reception A02. Rental point A03. Changing Room - Women A04. Changing Room - Man A05. Sanitary facilities A06. Relax Area A07. Outdoor swimming pool | <p>A2 CITY BATH - resting zone</p> <ul style="list-style-type: none"> A08. Indoor swimming pool A09. Refreshments Area A10. Emotional shower A11. Steam bath - Changing pool A12. Sitting relaxation pool A13. Indoor swimming pool A14. Courtyard garden | <p>B1 LIBRARY - interactive zone</p> <ul style="list-style-type: none"> B01. 1st Entrance Hall 24h/24h B02. Central counter B03. Self-service station B04. Newspaper library B05. Open access shelves - News B06. Sanitary facilities B07. Locker space | <p>B2 CAFE'</p> <ul style="list-style-type: none"> B08. 4th Entrance Hall B09. Facilities B10. Sanitary facilities B11. Open space B12. Outdoor space - private B13. Outdoor space - public B14. Medená Park |
|--|---|---|--|

Aim of the new Grössling complex is that of creating an open house centre where people could gather together and chilling out, but also isolate themselves and concentrate. The different functions are intertwined in a unitarian project, in order to emphasize the feeling of being in an iconic building with its own history. Bath and library interact, but paths and entrances are organised in a way so that different activities do not interfere with each other, giving the possibility to the users – local residents or tourist – to choose easily their way of experiencing the building.

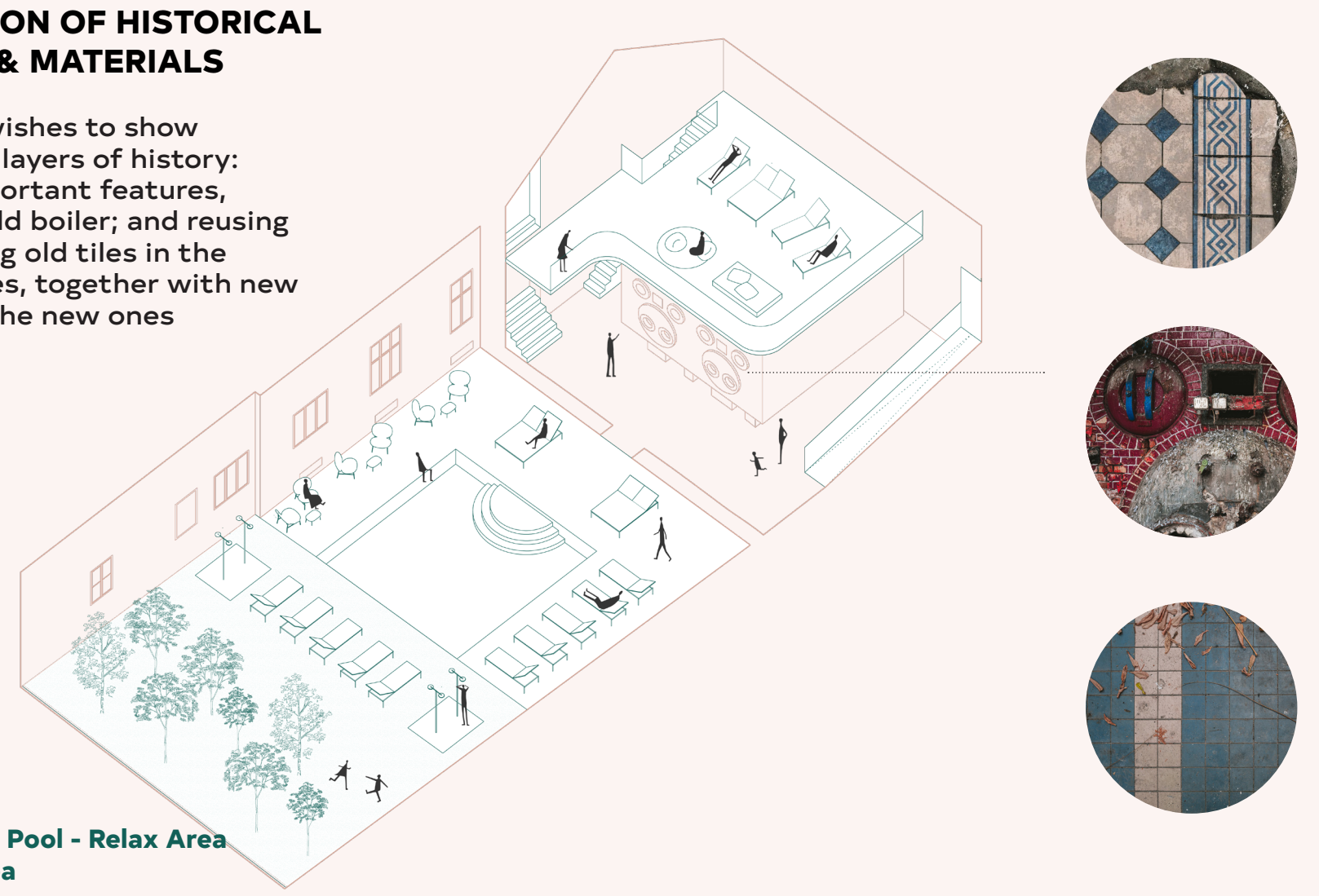
The core of the building is the bath with its historical and new pools. The latter are located in the physical heart of the complex, and the indoor one reuses the space of the "Schwimmbad für Damen" of 1914, and part of the outdoor one recalls the footprint of the small pools at different temperatures. The library, which has an overall capacity of 70.000 books, is organised on three levels: the first two are the most interactive ones while moving up the atmosphere becomes quieter; on the third floor are located also the artists in residence.

The ground floor facing the park is the most public and interactive part of the building; here are located the café, the welcoming-desk of the library, the kids' area and the reading corner for the daily press and the latest publications.

The projects aim to create an atmosphere that is respectful of the original building, renovating its Middle-European character by matching together old and new finishes and materials.

RESTORATION OF HISTORICAL FEATURES & MATERIALS

The project wishes to show the different layers of history: restoring important features, such as the old boiler; and reusing or reproducing old tiles in the original spaces, together with new materials in the new ones



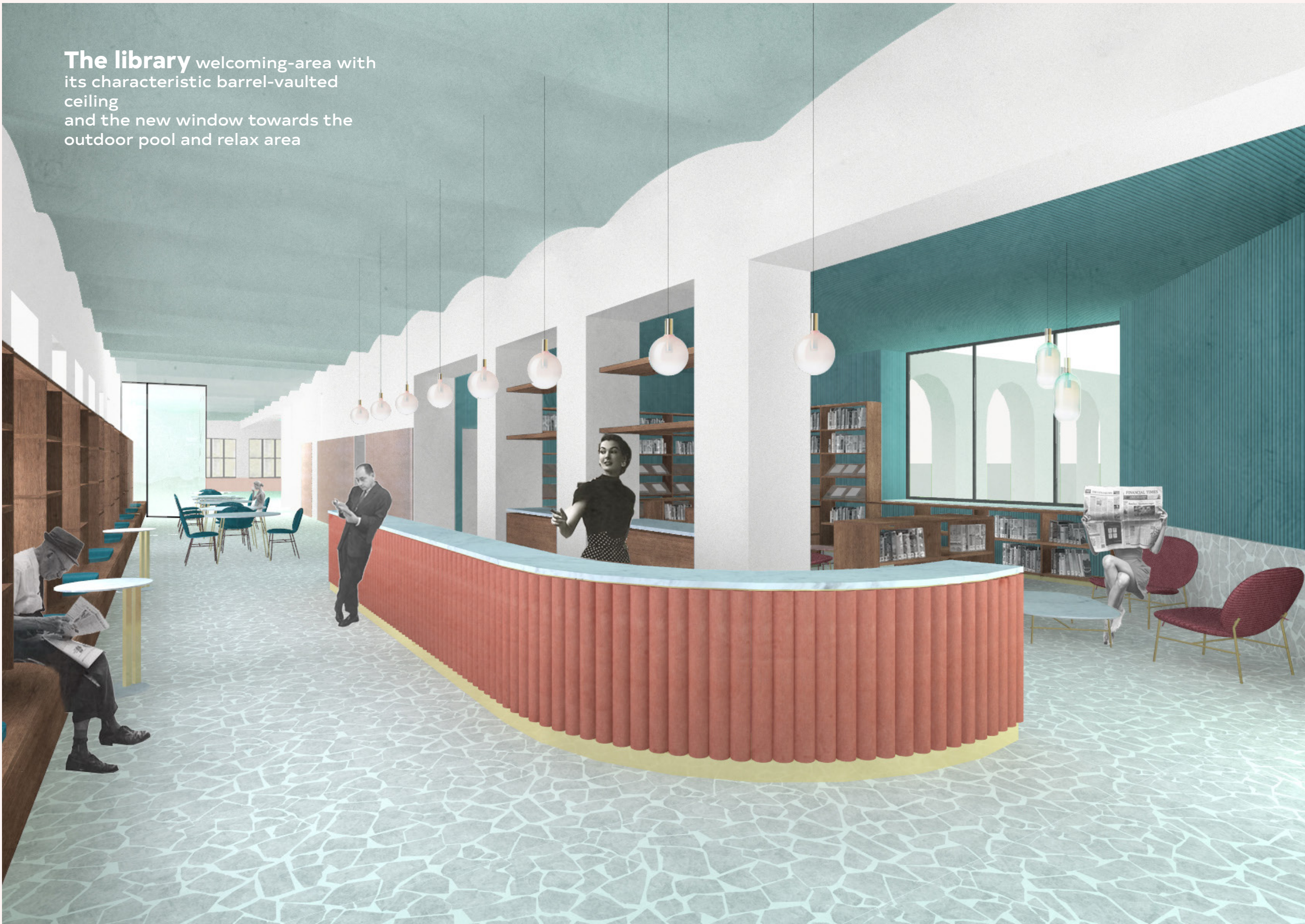
A19. Saltwater Pool - Relax Area
A28. Relax Area

FLEXIBLE SPACE

Being the most interactive part of the building the ground floor is structured to be as flexible as possible: the courtyard could be used as two separated relaxing areas (one for the café and the other for the bath) or as a single bigger outdoor space for events.



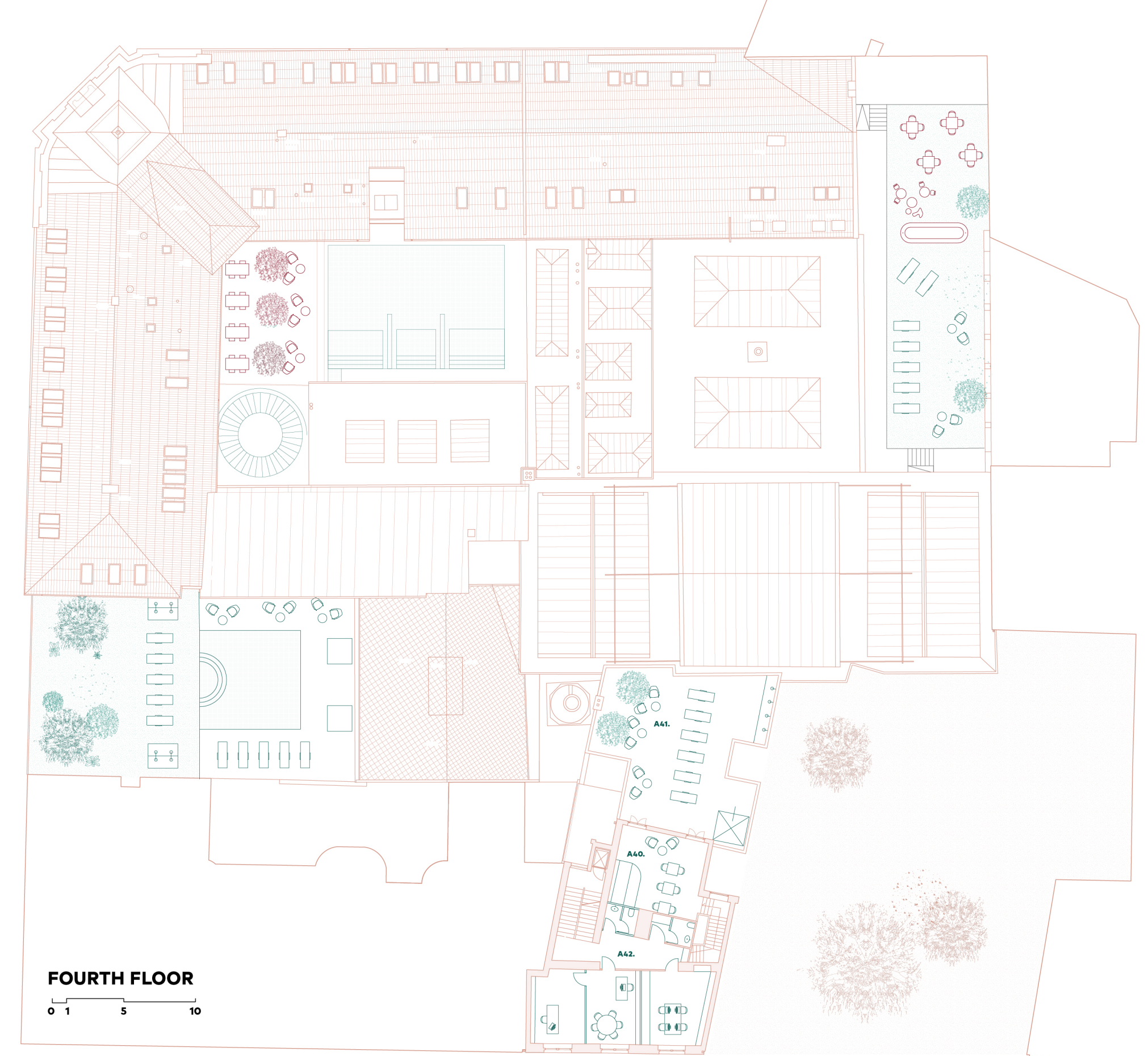
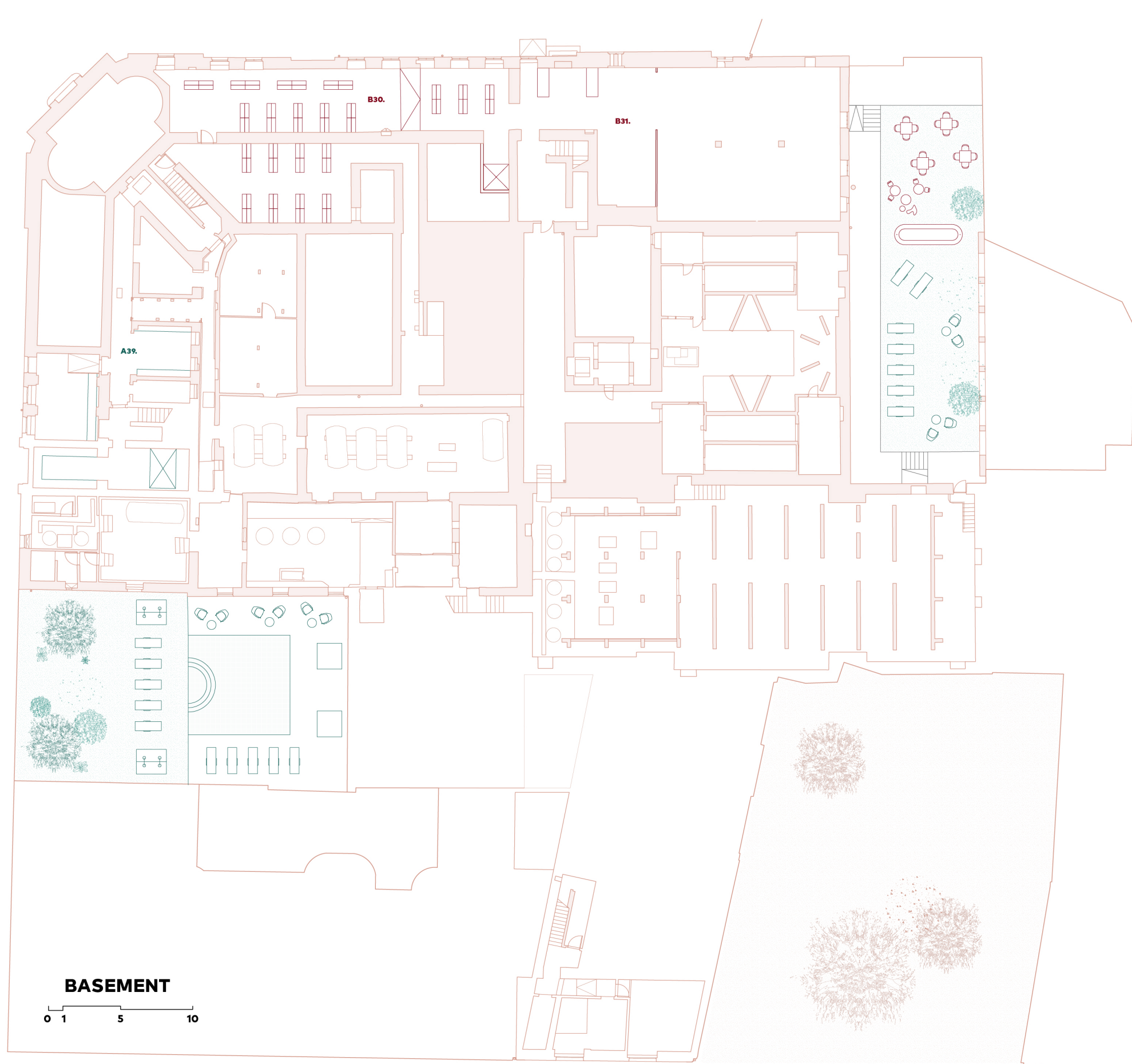
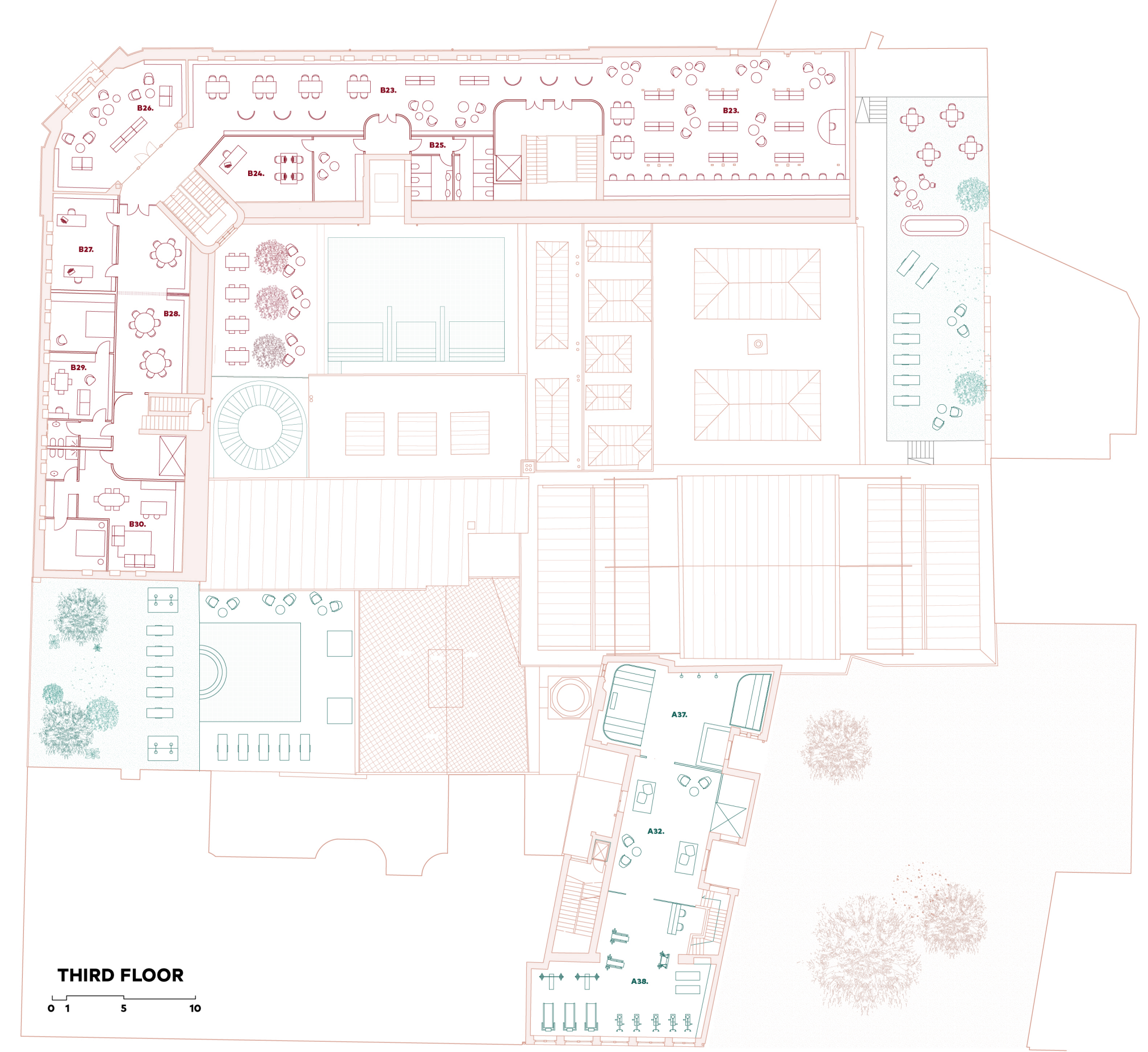
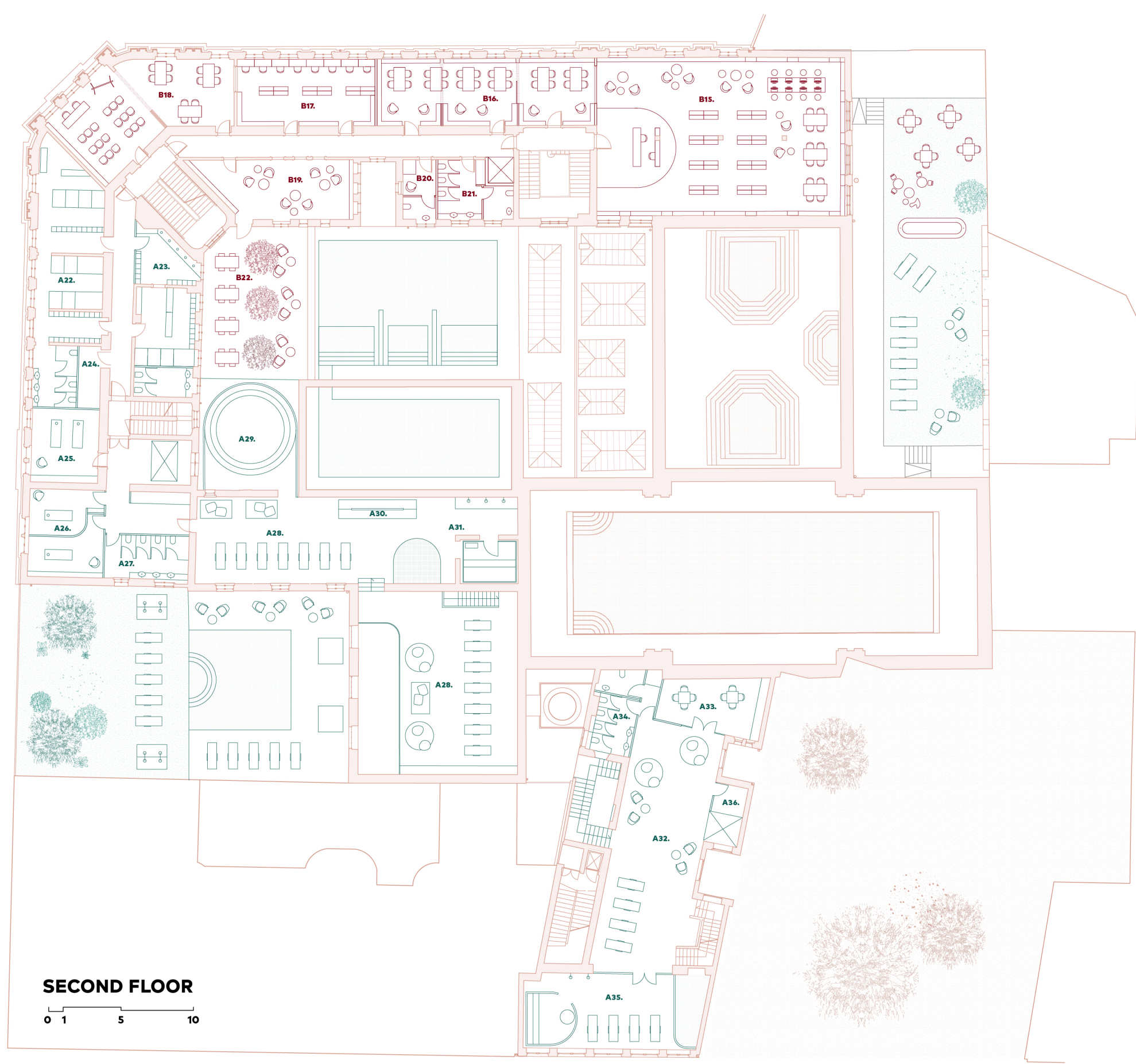
A14. Courtyard garden
B12. Outdoor space



The library welcoming-area with its characteristic barrel-vaulted ceiling and the new window towards the outdoor pool and relax area



The café has a Middle-European character that harmonises with the building, the false-ceiling hides the new ducts and gives continuity to the ground floor



A1 CITY BATH - interactive zone

- A22. Changing Room - Women
- A23. Changing Room - Man
- A24. Storage
- A25. Couple's massages room
- A26. Individual massage room
- A27. Sanitary facilities
- A28. Relax Area

A2 CITY BATH - resting zone

- A29. Steam bath - Changing pool
- A30. Kneipp path
- A31. Finnish Saunas - Changing pool
- A32. Relax Area
- A33. Refreshments Area
- A34. Sanitary facilities
- A35. Steam bath - Changing pool

- A36. Storage
- A37. Finnish Saunas - Changing pool
- A38. Gym
- A39. Storage - Laundry room
- A40. Bar - Refreshments Area
- A41. Terrace - Relax Area
- A42. City Bath Offices

B1 LIBRARY - interactive zone

- B15. Open access shelves - Computers
- B16. Flexible group study room
- B17. Individual study room
- B18. Workshop room
- B19. Reading room
- B20. Day room for library employees
- B21. Sanitary facilities
- B22. Terrace

B1 LIBRARY - resting zone

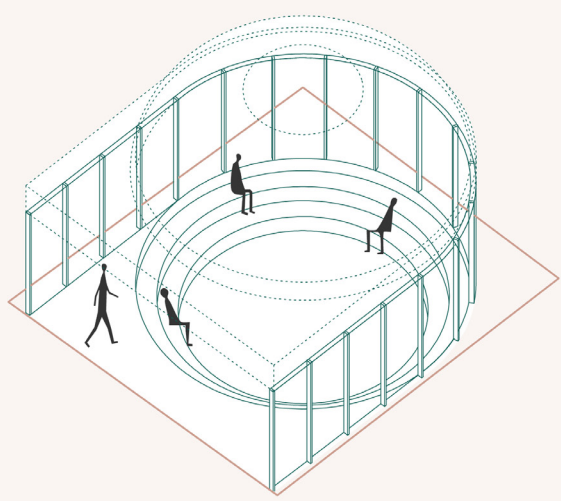
- B23. Open access shelves
- B24. City Library Offices
- B25. Facilities
- B26. Reading room

B3 RESIDENCY ZONE

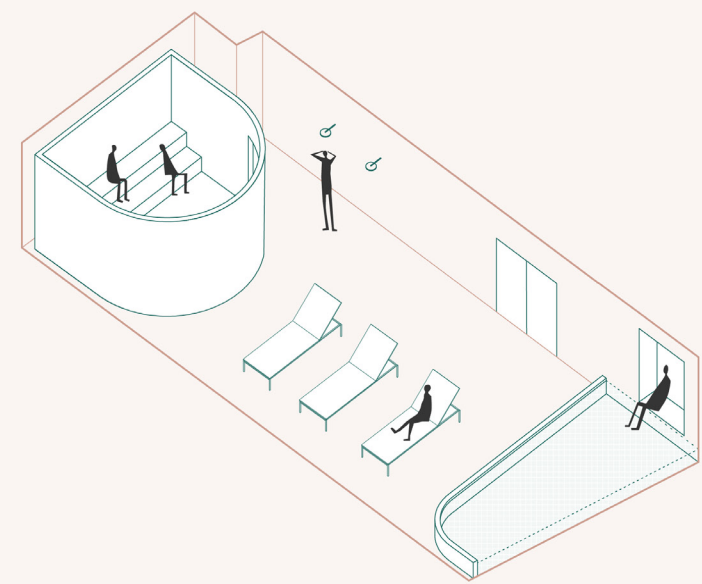
- B27. Individual workspace
- B28. Common workspace
- B29. Residence A - 50 mq
- B30. Residence B - 70 mq

NEW COMPONENTS

Newly added components, such as the steam bath on the second floor, have a distinctive language and finishes. The idea is to show clearly the new elements but harmonising them to the existing layers.



A29. Steam bath



A35. Steam bath - Changing Pool

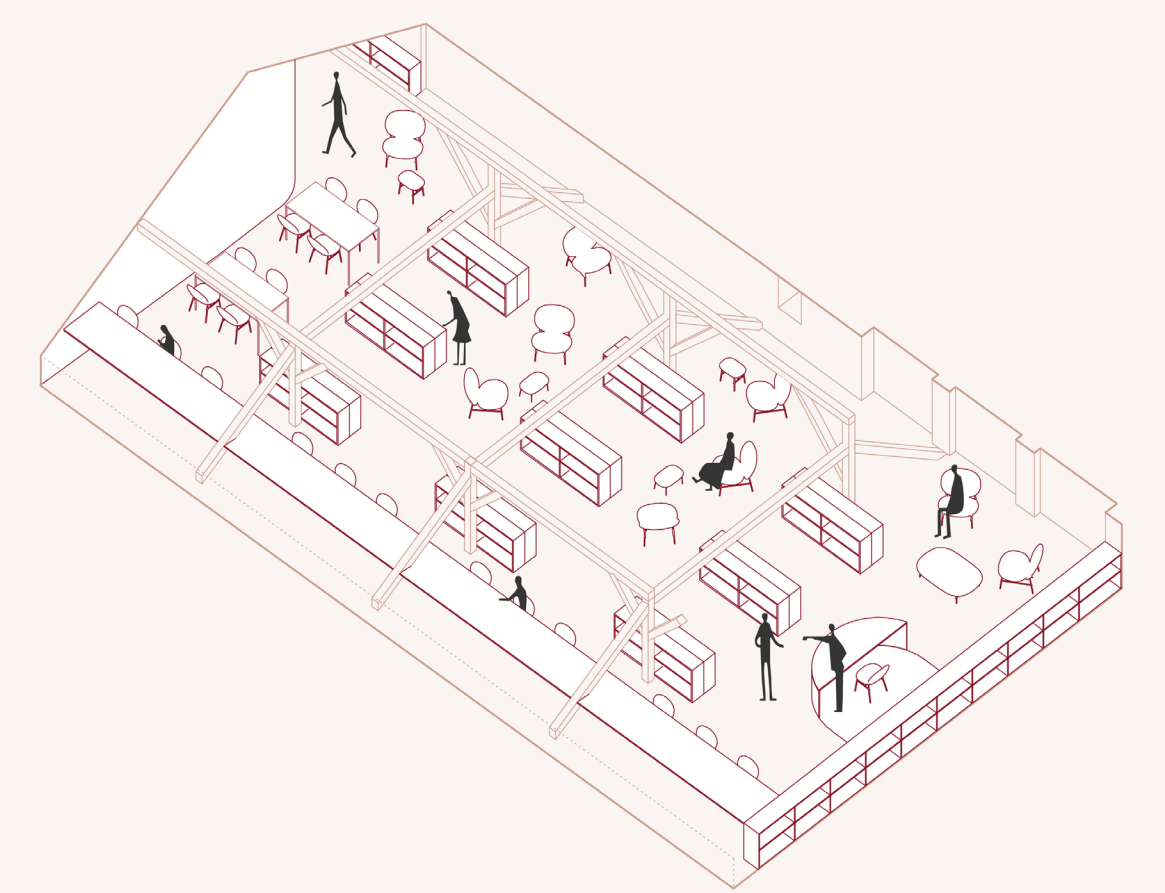


VARIETY OF SPACES

The library presents a variety of spaces with different characters and degrees of flexibility. The study rooms could be arranged differently, according to the needs; the roof level has low bookshelves to enhance the nice wooden structure.



B16. Flexible group study room



B23. Open access shelves

The outdoor swimming pool and relaxing area: footprint and forms recall the original layout of 1914



The new indoor pool in the restored space of the former "Schwimmbad für Damen", with new ceramic tilings.

