



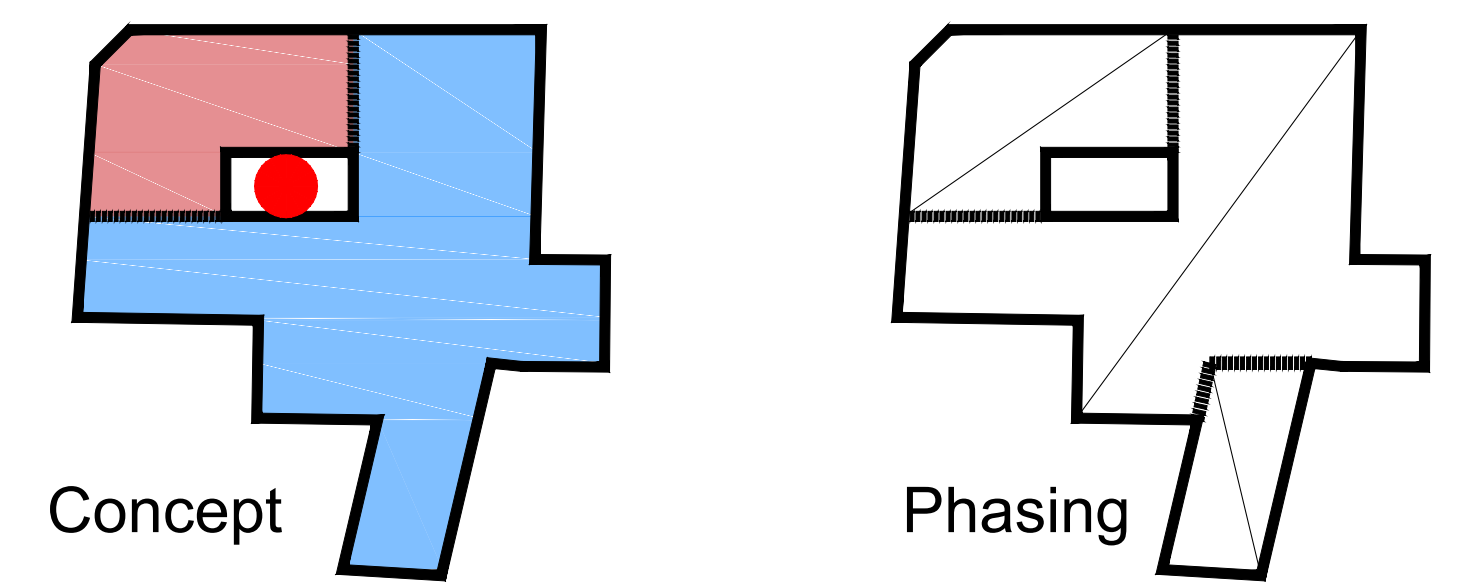
Site plan / 1st floor plan M 1:300



New pool

Concept:

The main question of the project: how to place the two main functions into the existing volumes? Our answer is simple: we organised them into two “L” shaped clusters around a central core. This **core** is the most important element of the concept.



The core is actually an **atrium** that plays a double role. On the one hand it refers to the most ancient bathing tradition in the country, the roman, on the other it gets a piece of nature – and natural light - into the main new spaces of the building (new indoor pool, bath’s refreshment zone, library interactive zone). Its place is given by the oldest pool space, where the pool had been long ago eliminated. The atrium is also the library’s outdoor space and the focus for the development of the roof terraces.

External access and open spaces:

The four extant entrances are used. The City Bath opens from the Medená, where we propose decorative street paving and traffic calming measures. The City Library main entrance is at the corner, while the staff and delivery entrance (for both institutions) opens from the Kúpeľná, where a truck loading place is provided. The inner transport routes of the cellar can be served by a freight elevator departing from here.

Both inner courtyards are unfavourable for solar exposure. We found the southern one a bit more advantageous, therefore propose we here the new outdoor pool, with adequate visual and acoustic protection.

City Bath:

In the **interactive zone** we considered three main aspects:

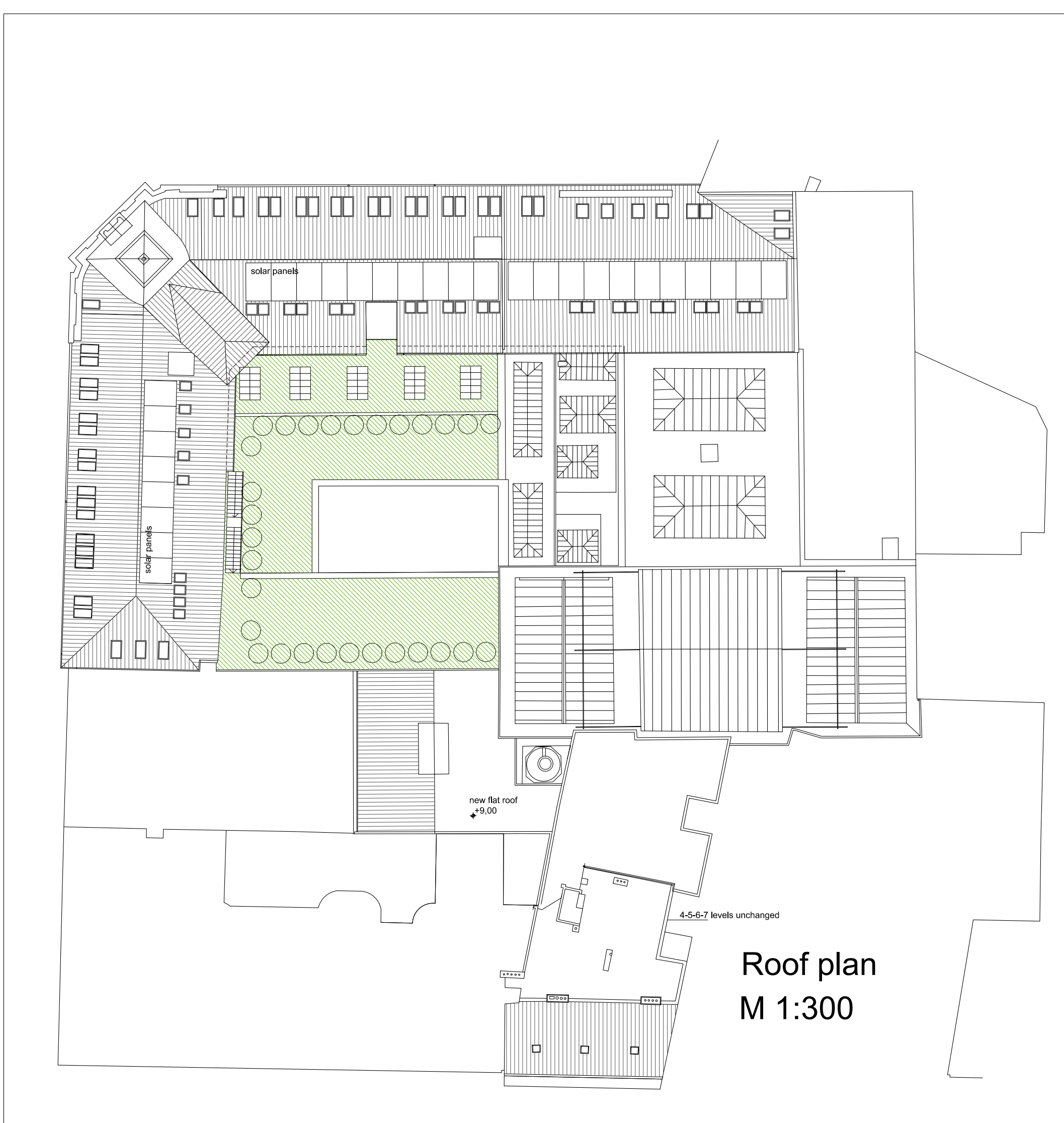
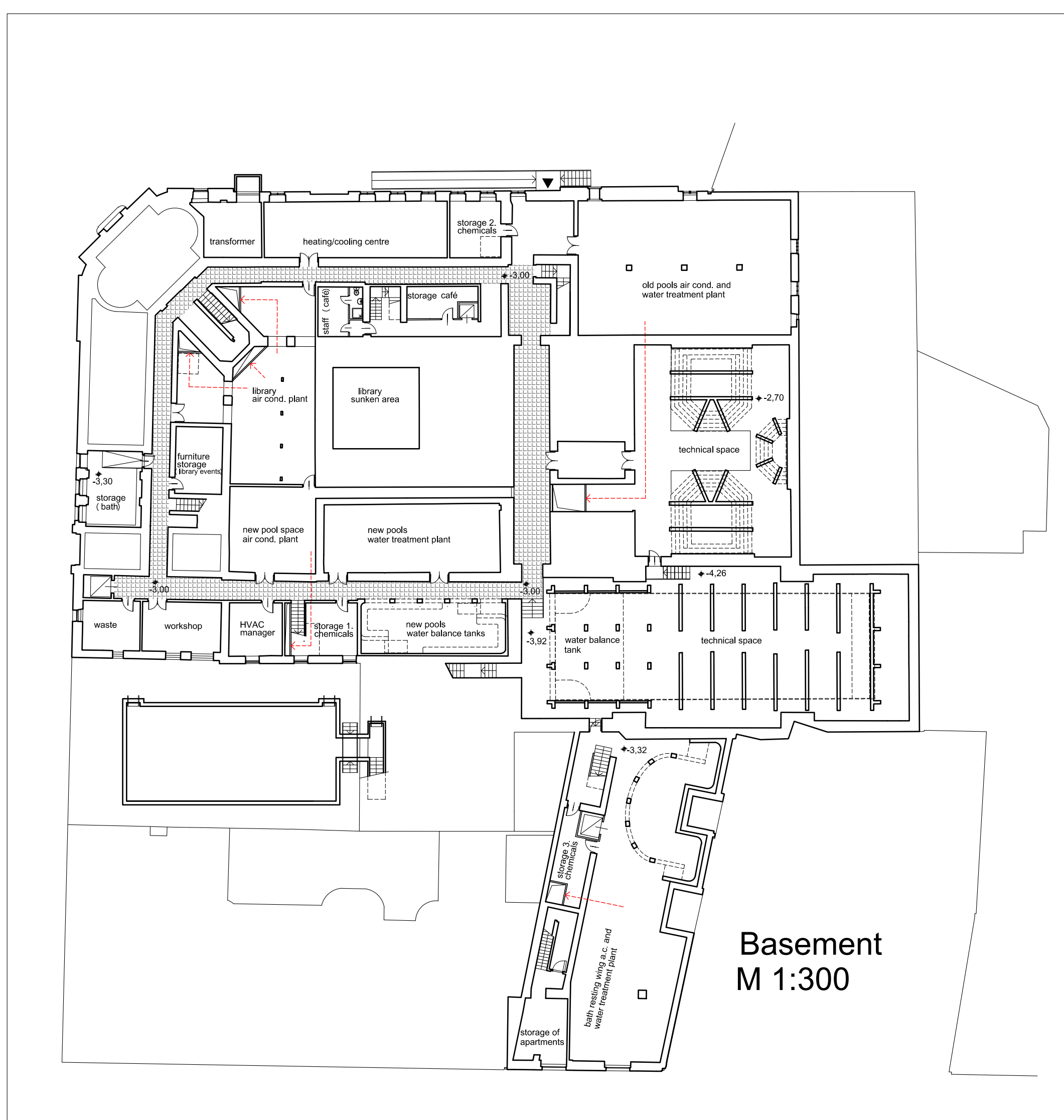
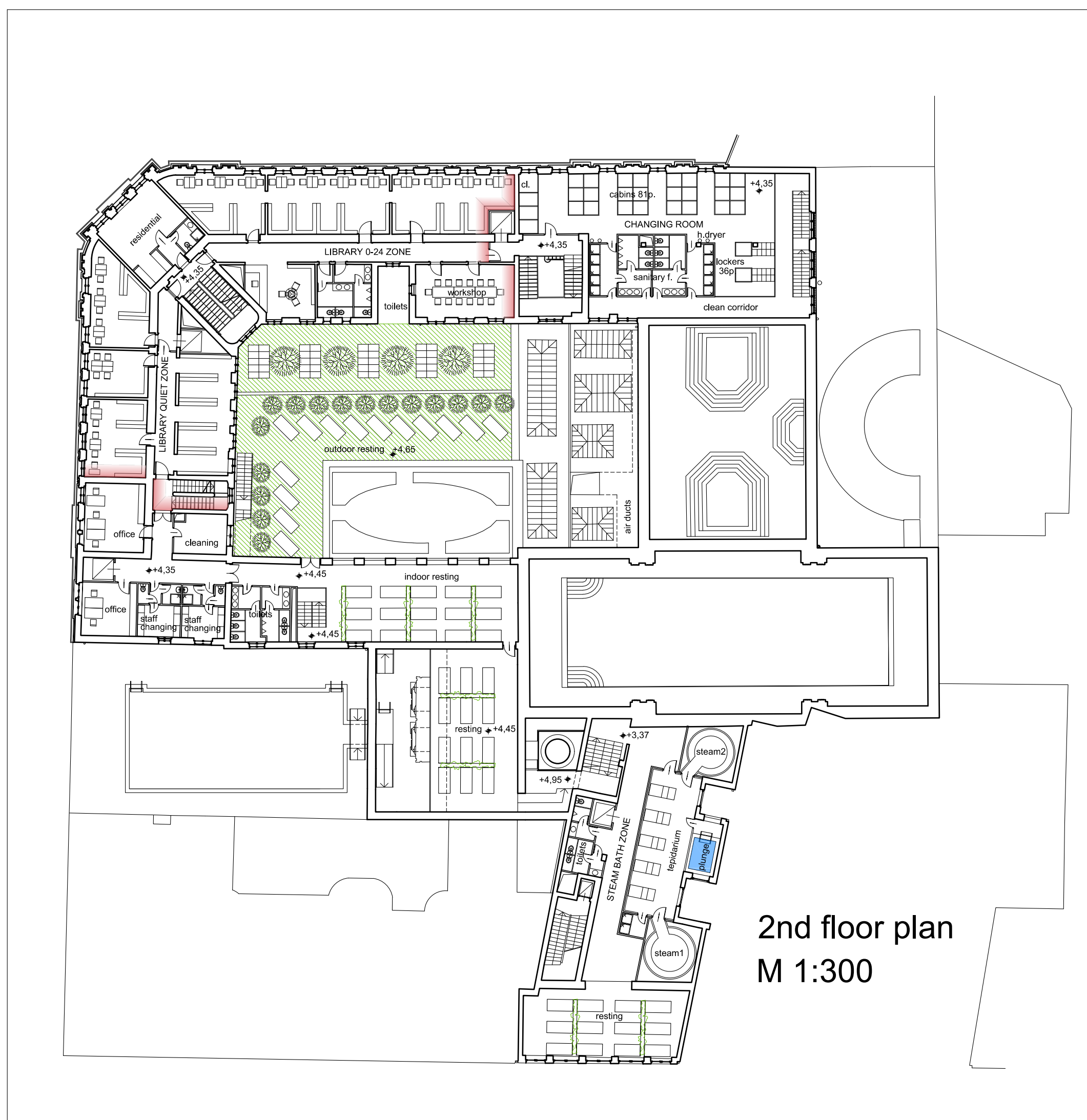
- To place the changing rooms into the wing that was originally built for this function in 1914.
- To designate a separate corridor to approach the swimming pool.
- To restore the transparency between the pool halls, that is so clearly visible in the historical photos.

In the **resting zone** we have concrete proposal about the facilities to be placed here - in addition to the saltwater pool.

name	capacity	temperature
finnish sauna	10	95-100 °C
stollen sauna	10	100 °C
herb sauna	5	40-50 °C
crystal sauna	5	75-85 °C
steam bath1	12	40-50 °C
steam bath2	8	35-45 °C
tepidarium	5	35-36 °C
plunge pools		13-15 °C

City Library:

Our proposal want to reach the same goal - by more modest means – that some well-known contemporary city libraries (e.g. in Stuttgart, Turku and lately Helsinki) achieved: the library’s interactive zone serves as a kind of living room of the city.



Library interactive zone