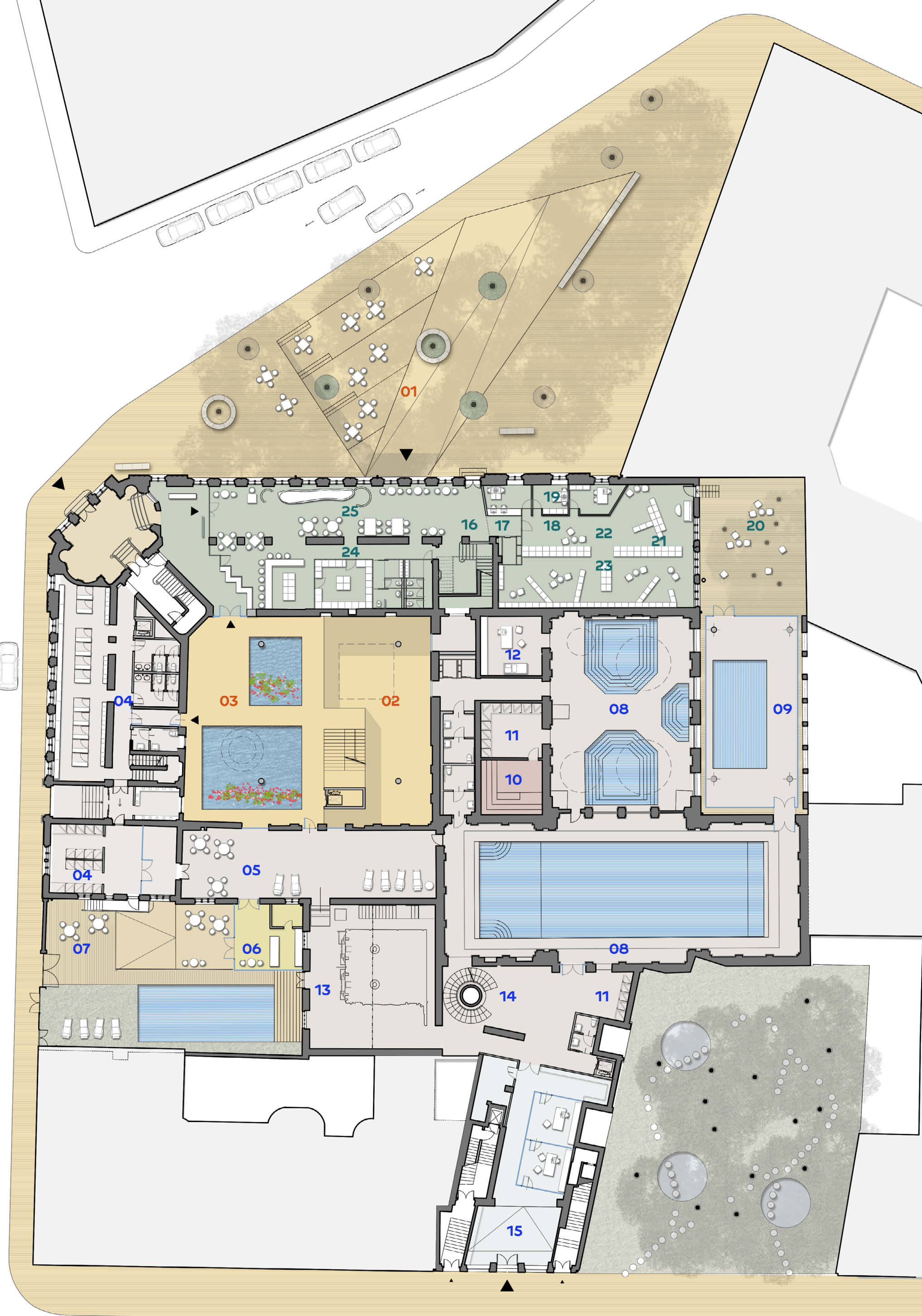


GROUND FLOOR

SCALE 1:300



GRÖSSLING IMMERSION

THE GENESIS OF THE PROJECT FOR THE GRÖSSLING BUILDING IS THE CONCEPT OF IMMERSION IN ITS VARIOUS PHYSICAL, MENTAL AND THEORETICAL MEANINGS.

1) THE FIRST MEANING, THE MOST EVIDENT, IS LINKED TO THE CONCEPT OF VERTICALITY. THE BUILDING'S DESIGN FOLLOWS AN ASCENT - DESCENT LOGIC. USING THE HUGE VARIETY OF AREAS OF THE COMPLEX, THE PROJECT'S PATH SLOWLY EMERGES FROM THE UNDERGROUND BASEMENT TO A SERIES OF SPACES UNTIL GETTING TO DIVE IN THE SKY ON THE HIGHEST TERRACE WHERE IT MERGES WITH THE DANUBE AND THE BRATISLAVA'S LANDSCAPE. IT IS A SPATIAL CONDITION OF EMERSION-IMMERSION BUT ALSO A SENSORY PATH LINKED TO THE CONCEPT OF LIGHT, AIR, WATER AND MATTER. THE PROJECT STARTS FROM DARKNESS AND CLOSED ENVIRONMENTS, ILLUMINATED BY ZENITHAL LIGHT, AND REACH ONES THAT ARE GRADUALLY BRIGHTER AND MORE OPEN TOWARDS THE OUTSIDE. FROM THE NEW ENTRANCE THAT DESCENDS FROM THE PARK OF MEDENÁ STREET, EXPLOITING PART OF THE SUBTERRANEAN, THE PROJECT GOES UP PASSING INITIALLY TO A "URBAN" LEVEL CONSISTING OF: THE HISTORICAL THERMAL BATHS, THE LIBRARY AND THE CHANGING ROOMS. THE SECOND STEP IS A COMBINATION OF SEVERAL TERRACES; THE FIRST ONES MORE INTIMATE AND CLOSED, FACING THE INTERIOR OF THE BUILDING, UP TO THE ALREADY NAMED TERRACE ON THE DANUBE. THE VERTICALITY OF THE PROJECT AND THE CIRCULATION BETWEEN THE DIFFERENT ROOMS IS MARKED IN THE FIRST PLACE BY ONE OF THE MOST AMBITIOUS GESTURES OF THE PROJECT, THE SPIRAL STAIRCASE THAT CLIMBS, LIKE A MINARET, THE CHIMNEY OF THE OLD POWER STATION AND SECONDLY BY THE LARGE CENTRAL ROOM THAT ACTS AS A LINK BETWEEN THE VARIOUS FUNCTIONS OF THE PROJECT.

2) THE SECOND MEANING OF IMMERSION IS "TO MERGE" DERIVING FROM THE SAME LATIN ETHYMOLOGY (MERGERE) LEADS TO THE CONCEPTION OF A CENTRAL ENVIRONMENT THAT ACTS AS A UNION OF THE VARIOUS SOULS OF THE BUILDING, THEREFORE, NOT ONLY A VERTICAL BUT ALSO AN HORIZONTAL IMMERSION. COMMUNITY LIFE AND THE SHARED FUNCTIONS OF THE PROJECT TAKE PLACE IN THE LARGE CENTRAL AREA AND ARE DIVIDED ON THREE LEVELS. THE BAR IS LOCATED AT LEVEL -1 WHILE AN HALL IS PLACED AT LEVEL 0 THOUGHT AS A SHARED SPACE BETWEEN THE LIBRARY, THE CHANGING ROOMS AND THE TWO BATH AREAS. FINALLY AT LEVEL +1 IS SITUATED THE LARGE SQUARE THAT, LIKE A PATIO, FUNCTIONS AS AN EVENT AREA CONNECTING BOTH THE TERRACES AND THE SWIMMING POOL AREAS WITH THE SECOND FLOOR OF THE LIBRARY. THE EMPTYING AND FILLING OF THE CENTRAL SPACE HAS MADE POSSIBLE TO MAINTAIN ALMOST INTACT THE ORIGINAL LAYOUT OF THE BUILDING AND IT IMPROVES CIRCULATION AND FUNCTIONALITY RESPECTING THE HISTORICAL ELEMENTS OF THE THERMAL BATHS.

3) THE THIRD MEANING IS AN IMMERSION IN THE HISTORY OF GRÖSSLING AND MORE GENERALLY OF BRATISLAVA. THE PROJECT, WITH THE EXCEPTION OF THE CENTRAL AREA, MAINTAINS ALL THE CHARACTERISTICS AND HISTORICAL ENVIRONMENTS OF THE ORIGINAL BATHROOMS. THE DESIGN AIMS TO THE CONSERVATION BUT ALSO TO THE ENHANCEMENT AND FRUITION OF THE BUILDING'S HISTORICAL HERITAGE. IT IS NOT JUST A SIMPLE MONUMENT TO BE OBSERVED BUT ALSO PLACE TO LIVE, TO BE INTERPRETED. BOTH THE CHIMNEY AND THE BOILER HOUSE BECOME, ALTHOUGH PRESERVED, A FUNDAMENTAL AND INTEGRAL PART OF THE PROJECT. LARGE THERMAL COMPLEXES, LIKE CATHEDRALS, ARE BUILDINGS THAT CHANGE OVER TIME WITH THE CONSTRUCTION OF ANNEXES IN DIFFERENT HISTORICAL PERIODS BUT ALWAYS FOLLOWING A SIMILAR DESIGN PHILOSOPHY. AN ATTEMPT WAS SO MADE NOT ONLY TO PRESERVE THE ARCHITECTURAL HERITAGE BUT ALSO THE VERY SOUL OF THE BUILDING TYPOLOGY. DURING THE DESIGN OF THE NEW SPACES, THE CHOICE WAS FOCUSED TO RESPECT ONE OF THE POINTS THAT WE CONSIDER MOST IMPORTANT IN THERMAL BATHS ARCHITECTURE, USED FROM ROMAN TIMES TO THE PRESENT DAY, THAT IS, THE USE OF ZENITHAL LIGHT. THE NEW SKYLIGHTS, MADE UP OF PURE GEOMETRIC SHAPES, ARE ONE OF THE MOST CHARACTERISTIC ELEMENTS OF THE PROJECT AND THUS BRING, THROUGH A SMALL GESTURE, CONTEMPORANEITY WITHIN THE GRÖSSLING WHILE MAINTAINING THE ORIGINAL SPIRIT. PRECISELY FOLLOWING THIS LOGIC OF RESPECT AND CONSERVATION OF THE ORIGINAL COMPLEX THAT WE COME TO THE LAST MEANING OF IMMERSION.

4) IMMERSE GRÖSSLING IN THE CITY. THE NEED WAS TO MERGE THE PROJECT AND THE GRÖSSLING BUILDING, CURRENTLY SELF-ENCLOSED, WITH THE CITY AND IN PARTICULAR WITH THE PARK ON MEDENÁ STREET, RESPECTING HOWEVER THE HISTORY AND MONUMENTALITY OF THE NORTH AND WEST ELEVATIONS OF THE BUILDING. THE IDEA WAS SO TO BRING THE PARK INTO THE GRÖSSLING AND TO BRING THE GRÖSSLING INTO THE PARK. IN ORDER TO ACCOMPLISH THIS, THE PARK AND BUILDING HAS BEEN INTEGRATED BY CREATING A NEW ACCESS THAT LEADS DIRECTLY FROM THE SQUARE TO THE CORE OF THE BUILDING, THE VERTICAL HALL. THE NEW UNDERGROUND ENTRANCE, TAKING ADVANTAGE OF PART OF THE BASEMENTS, SATISFIES THE NEED TO MAINTAIN THE ORIGINAL FACADE AND NOT TO MODIFY BY ANY INTERVENTION (RAMPS, ETC.) THE HISTORICAL ENTRANCE IN THE CORNER OF THE STREET (WHICH IS MAINTAINED AS ACCESS) BUT IT ALSO SATISFIES THE DESIRE FOR A NEW CONNECTION BETWEEN GRÖSSLING BUILDING AND THE CITY OF BRATISLAVA. THE NEW ENTRY TRANSFORMS AND INTEGRATE THE PARK INTO AN EFFECTIVE PART AND DOORWAY OF THE PROJECT, AND CREATING A MORE FUNCTIONAL ACCESS FOR THE LARGE NUMBER AND VARIETY OF VISITORS THAT A MULTIPURPOSE BUILDING LIKE GRÖSSLING REQUIRES. AT THE NEW ENTRANCE, IN THE BASEMENT, IT IS ALSO LOCATED THE NEW CAFÉ. ONE OF THE FUNDAMENTAL POINTS OF THE PROJECT. IT ACTS ON ONE SIDE ALMOST AS A KIOSK, SERVING THE PARK AND THE CITY, AND ON THE OTHER SIDE AS INTERNAL CAFÉ, RE-INTERPRETING WITH ITS POSITIONING THE CONCEPT OF PUB AND TAVERN VERY PRESENT IN BRATISLAVA'S TRADITION.

PROGRAMME

X1. COMMON SPACES

- .01 IMMERSION SQUARE AND ENTRANCE
- .02 LOWER-LEVEL FOYER
- .03 PATH OF THE WATER LILIES

A1. CITY BATH - INTERACTIVE ZONE

- .04 CHANGING ROOMS
- .05 BATH HALLWAY
- .06 GASTRONOMIC SERVICE
- .08 EXISTING POOLS
- .09 NEW INDOOR POOL
- .10 STEAM BATH
- .11 SHOWERS
- .12 FIRST AID ROOM

A2. CITY BATH - RESTING ZONE

- .04 CHANGING ROOMS AND SANITARY FACILITIES
- .07 GARDEN OF THE SALTWATER POOL
- .11 SHOWERS
- .13 PATH OF THE INDUSTRIAL ARCHEOLOGY
- .14 STAIRWAY TO RELAX
- .15 PUBLIC RELATIONS PREMISES

B1. LIBRARY

- .16 ENTRANCE
- .17 SELF SERVICE MACHINES
- .18 SELF-CHECK
- .19 ADMINISTRATIVE PREMISES AND FACILITIES
- .20 READING GARDEN
- .21 OPEN ACCESS SHELVES
- .22 INTERACTIVE ZONE
- .23 RESTING ZONE
- .24 LITERARY CAFÉ - PREMISES
- .25 LITERARY CAFÉ - OPEN SPACES

PATH OF THE WATER LILIES



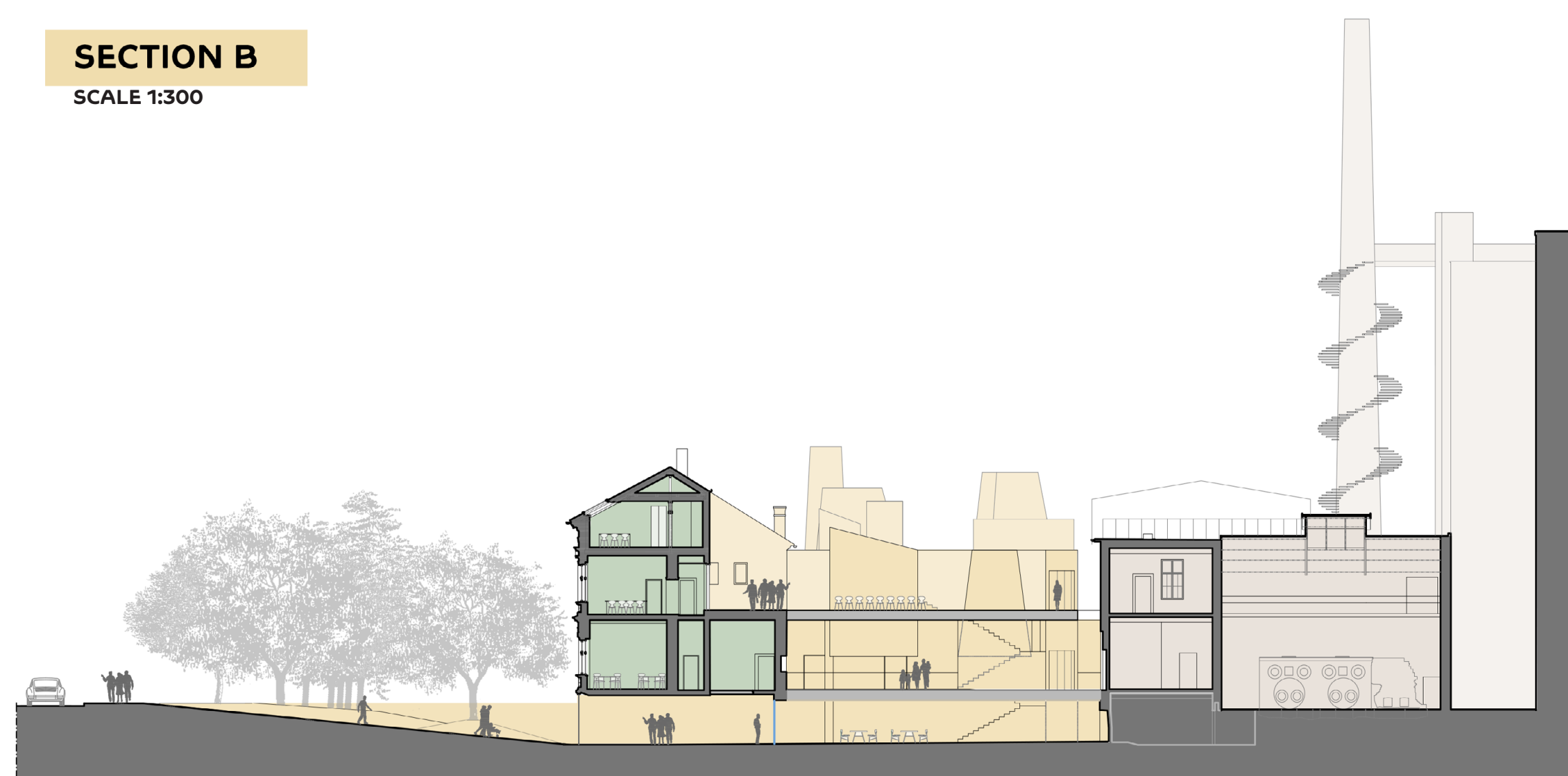
ENTRANCE ELEVATION

SCALE 1:300



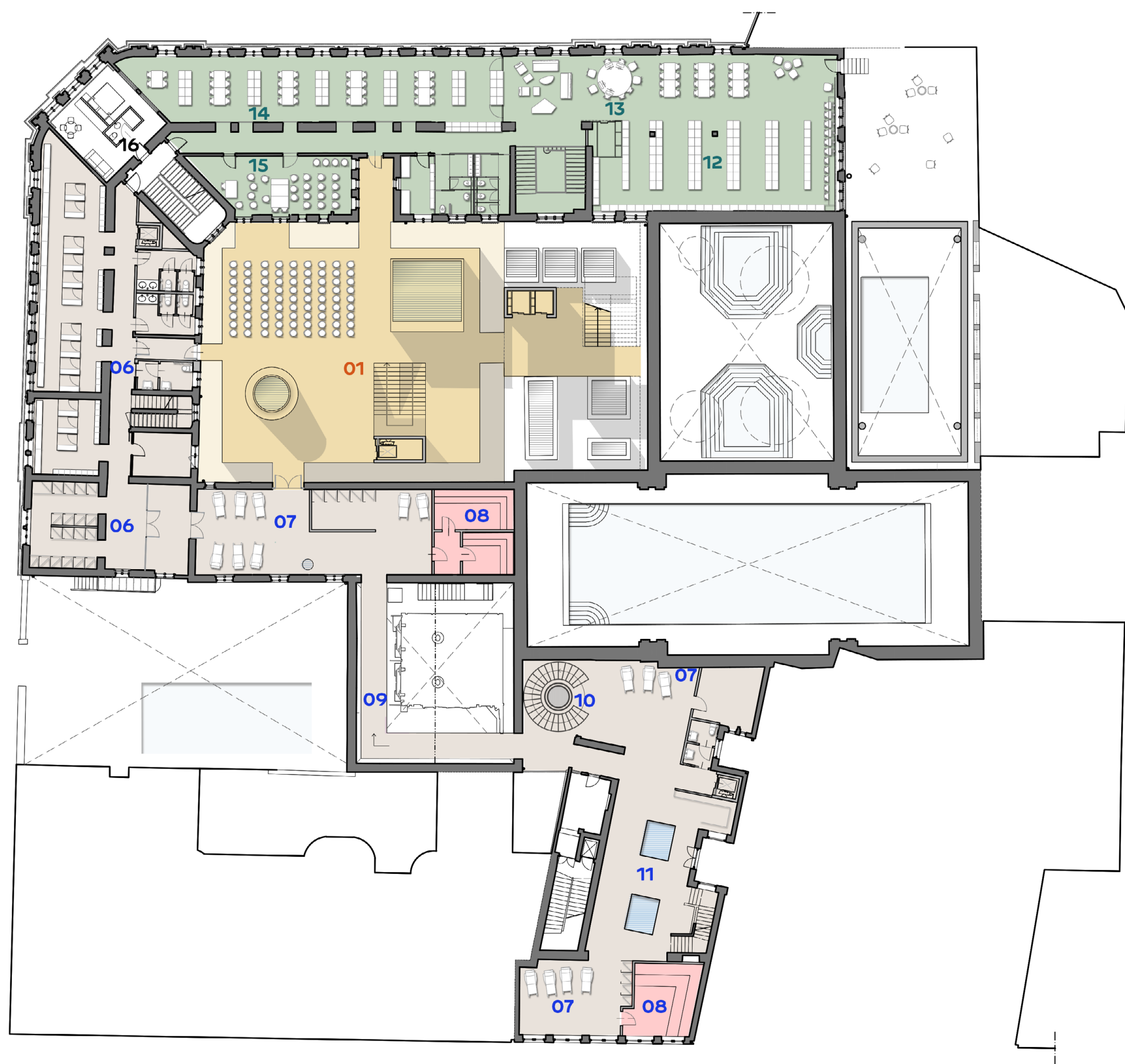
SECTION B

SCALE 1:300



FIRST FLOOR

SCALE 1:300



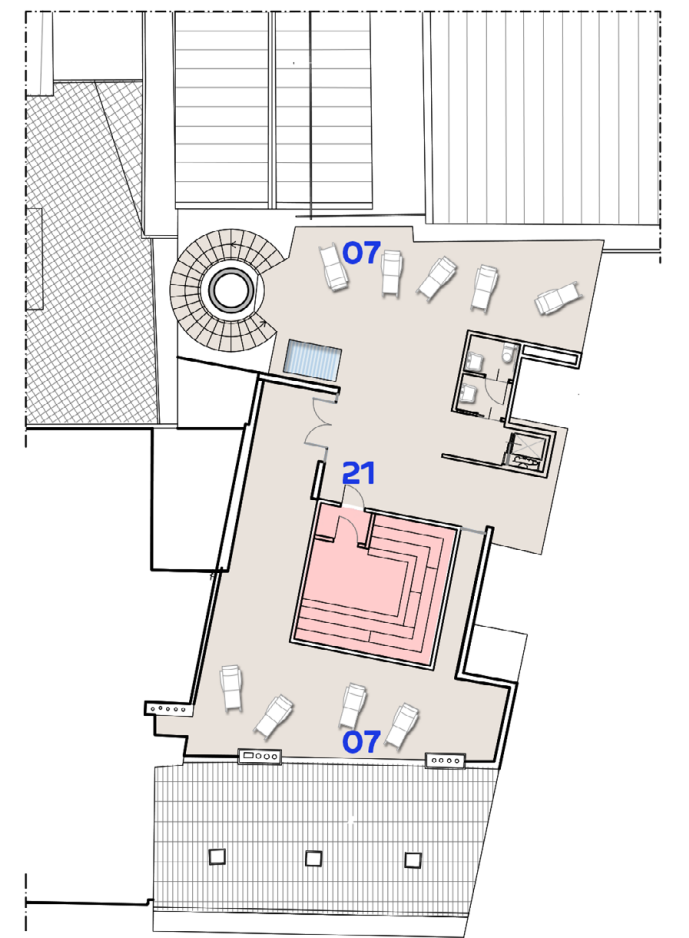
SECOND FLOOR

SCALE 1:300



THIRD FLOOR

SCALE 1:300



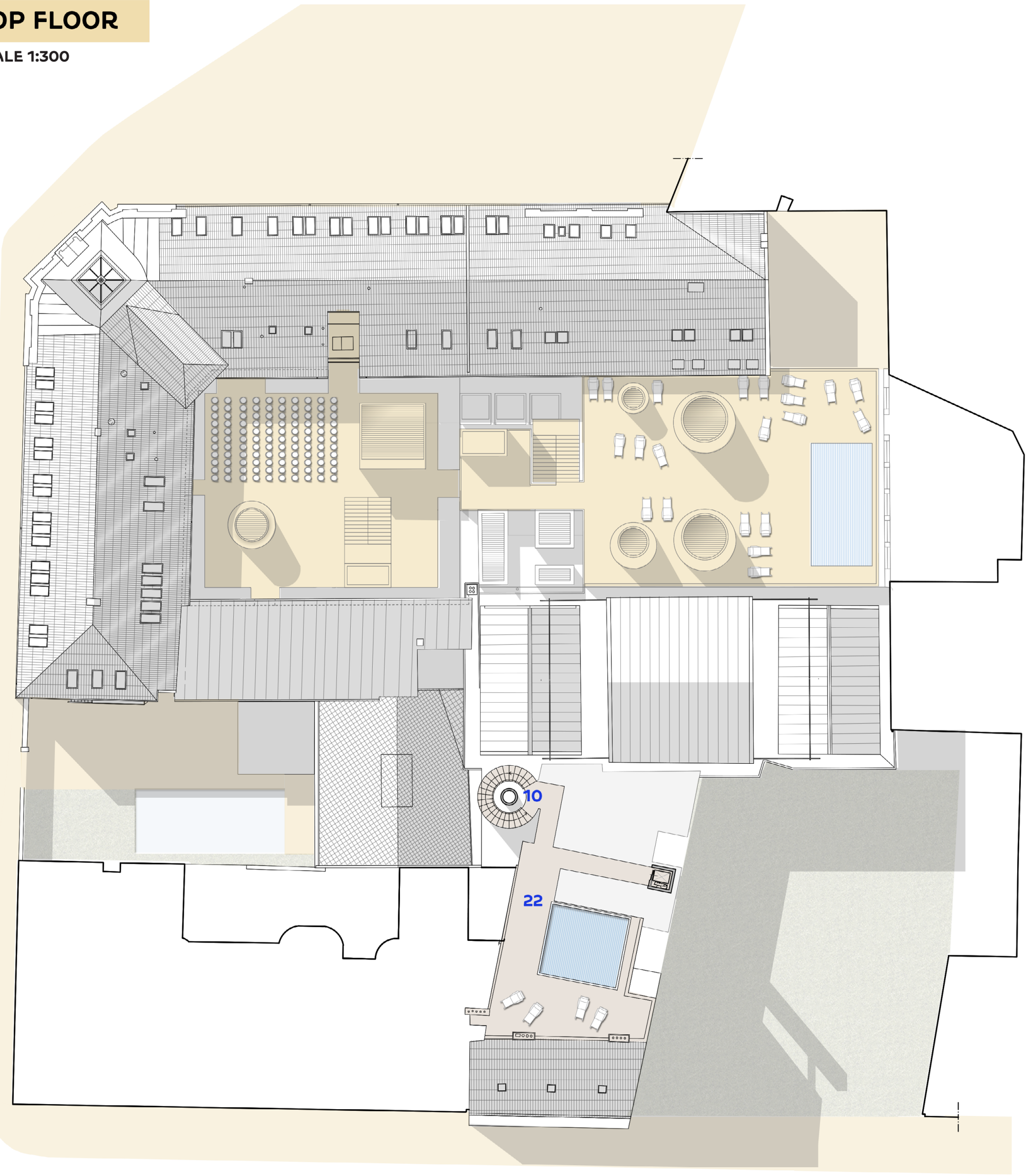
BASEMENT // MAIN ACCESS

SCALE 1:300



TOP FLOOR

SCALE 1:300



PROGRAMME

X1. COMMON SPACES

- .01 UPPER-LEVEL PLAZA (EVENTS)
- .02 IMMERSION SQUARE AND ENTRANCE
- .03 CAFÉ
- .04 LOWER-LEVEL FOYER
- .05 TICKET/FRONT OFFICE

A1. CITY BATH - INTERACTIVE ZONE

- .06 CHANGING ROOMS AND SANITARY FACILITIES
- .17 NEW OUTDOOR POOL
- .18 ADMINISTRATIVE PREMISES AND FACILITIES
- .19 MESSAGES AND OTHER THERAPEUTIC PROCED

A2. CITY BATH - RESTING ZONE

- .06 CHANGING ROOMS AND SANITARY FACILITIES
- .07 RESTING ROOM
- .08 SAUNA
- .09 PATH OF THE INDUSTRIAL ARCHEOLOGY
- .10 STAIRWAY TO RELAX
- .11 CALIDARIUM/FRIGIDARIUM
- .21 FINNISH SAUNA AND ICE COOLING
- .22 ROOFTOP POOL

B1. LIBRARY

- .12 OPEN ACCESS SHELVES
- .13 INTERACTIVE ZONE
- .14 RESTING ZONE
- .15 WORKSHOP ROOM

B3. RESIDENCY ZONE

- .16 ACCOMODATION UNIT 1
- .20 ACCOMODATION UNIT 2

NEW INTERACTIVE POOL



SECTION D

SCALE 1:300



SECTION A

SCALE 1:300

