

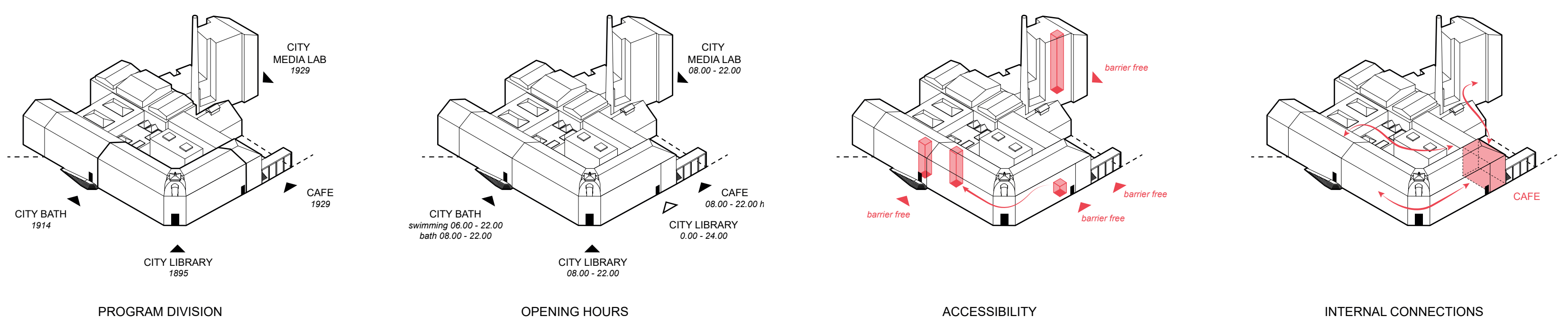
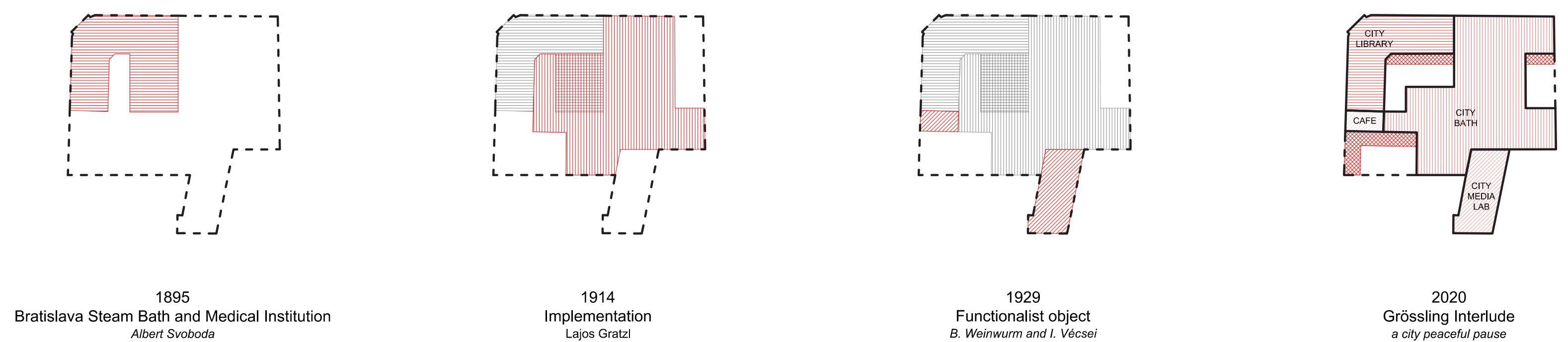
An interlude is a short period of time when an activity or situation stops and something else happens.

The importance of the heritage, history and tradition of the building moved us to create and enter a time warp, which takes us from the 19th century, through the Golden Era, to the present and coming future.

The proposal wants to recreate the original mood of Bratislava bath, when the building was used as a meeting and joyful place, and to enrich that same feeling with new social functions such as Library and Media Lab. Grössling Interlude will offer a wide range of creative activities, that will attract all sorts of citizens, becoming a new and strong social gathering place.

The architectural language of the proposal takes care of the existing buildings and simply using few interventions it brings their peculiarities, currently hidden behind abandoned and ruined spaces, forward in time. The final result is a heterogeneous mix, where different time periods overlap each other and the original architecture can take part in a new reality.

Smooth cuts in the floors increase the vertical visual connection between spaces. An helicoidal staircase, already visible from outside, attracts and guides people into the new City Media Lab. The slender columns are the leitmotif of the new intervention, giving order and continuity to the building. This arcade invites to promenade through the building, a continuous dialogue between interior and exterior, new and existing spaces.



RESIDENCY AREA (1929)

- Apartment #1: 60 m2
- Apartment #2: 65 m2

CITY MEDIA LAB (1929)

- Lobby: 85 m2
- Event area: 90 m2
- Meeting room #1: 17 m2
- Meeting room #2: 30 m2
- Group working spaces: 60 m2
- VR Areas: 18 m2
- 3D printers: 19 m2
- Music Studios: 19 m2
- Photography Studio: 20 m2

CITY BATH (1914)

- INTERACTIVE ZONE**
- Lobby: 50 m2
  - Changing area: 30 cabins (4 wheelchair accessible), 128 lockers
  - Steam bath: 15 m2
  - Sauna #1: 10 m2
  - Sauna #2: 10 m2
  - Fresh air bath: 12m 2
  - Sitting pools: 86 m2
  - Swimming pool: 210 m2
  - New outdoor swimming pool: 90 m2
  - New indoor swimming pool: 65 m2
  - Outdoor covered relax area: 93 m2
  - Outdoor relax area: 96 m2
  - Refreshments area: 38 m2
  - Office #1: 13 m2
  - Office #2: 13 m2

RESTING ZONE

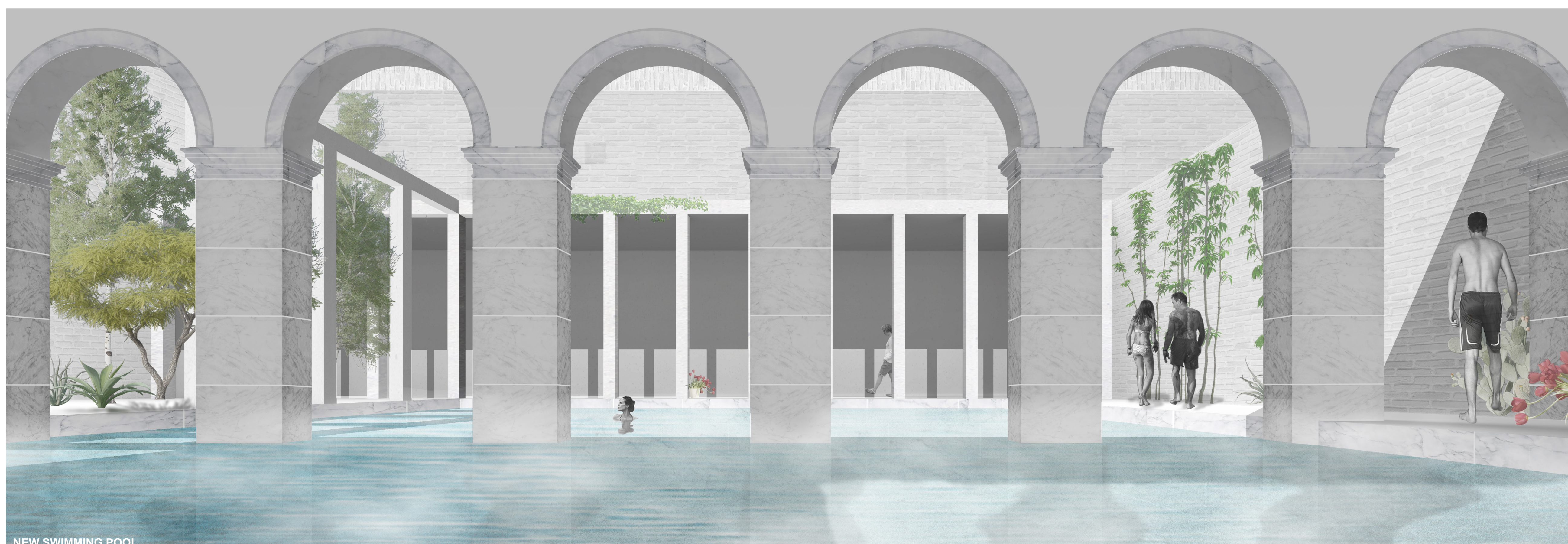
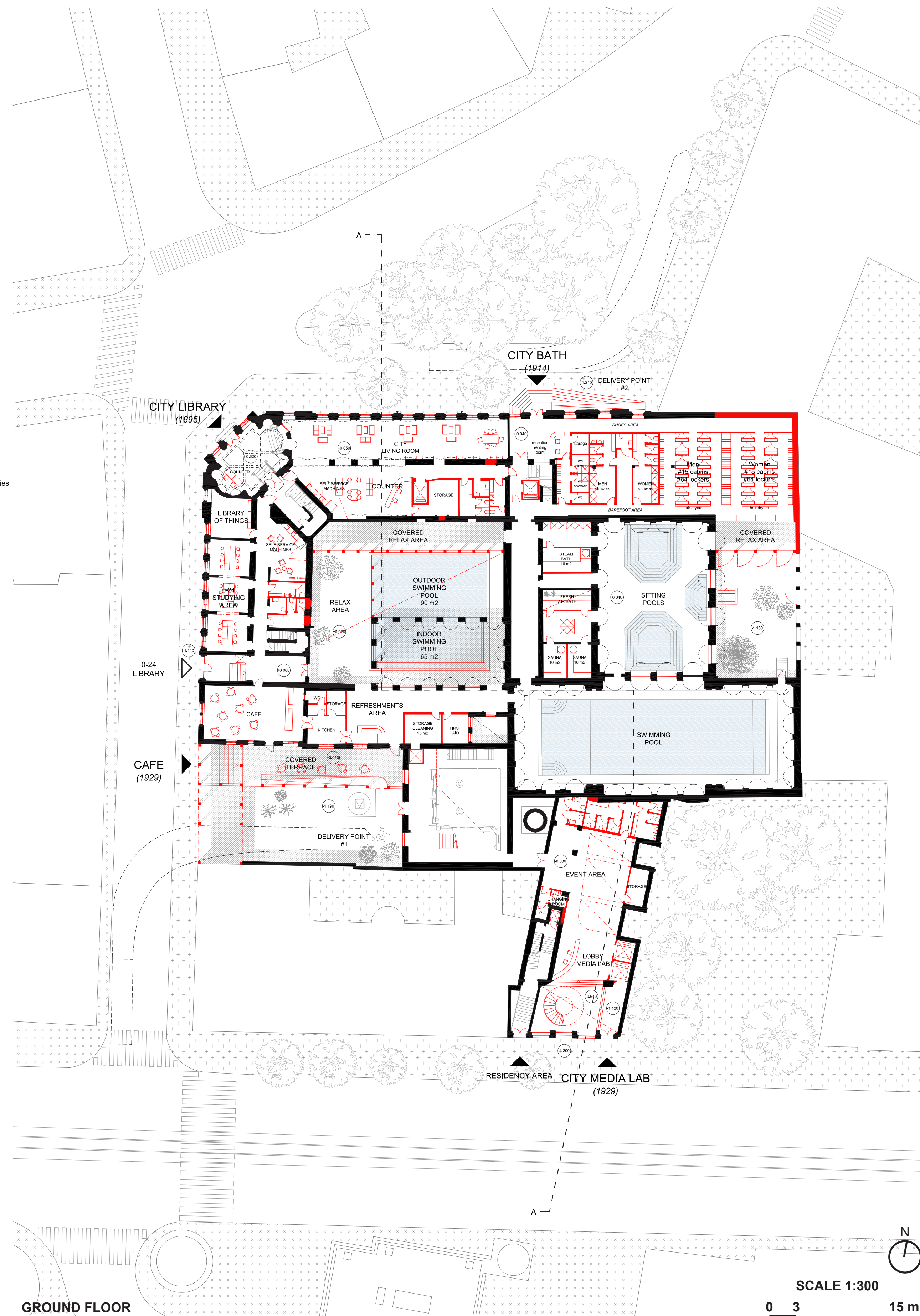
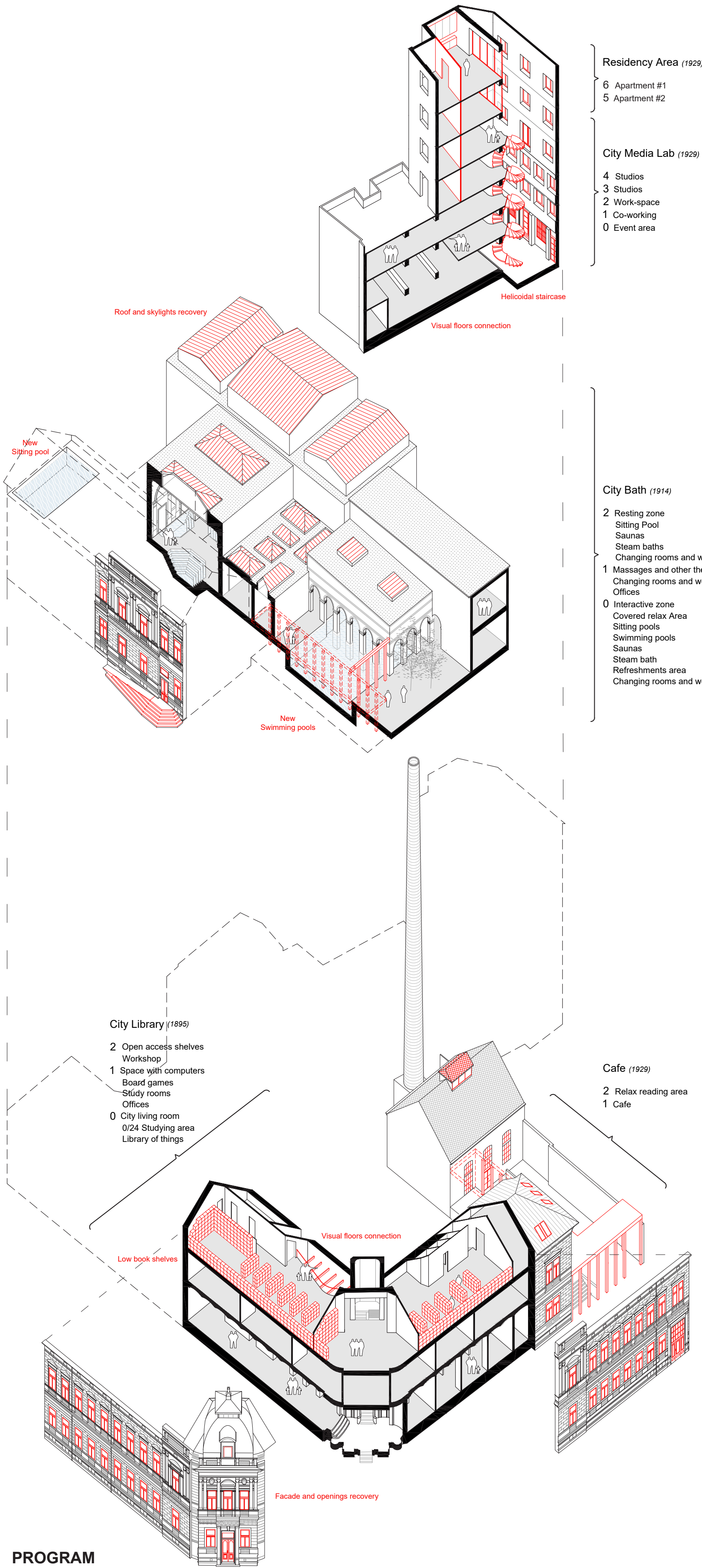
- Changing area #1: 2 cabins (1 wheelchair accessible), 17 lockers
- Changing area #2: 2 cabins (1 wheelchair accessible), 17 lockers
- Massage area: 125 m2
- Sauna #1: 16 m2
- Sauna #2: 20 m2
- Steam bath #1: 16 m2
- Steam bath #2: 14 m2
- Sitting pool: 50 m2

CITY LIBRARY (1895)

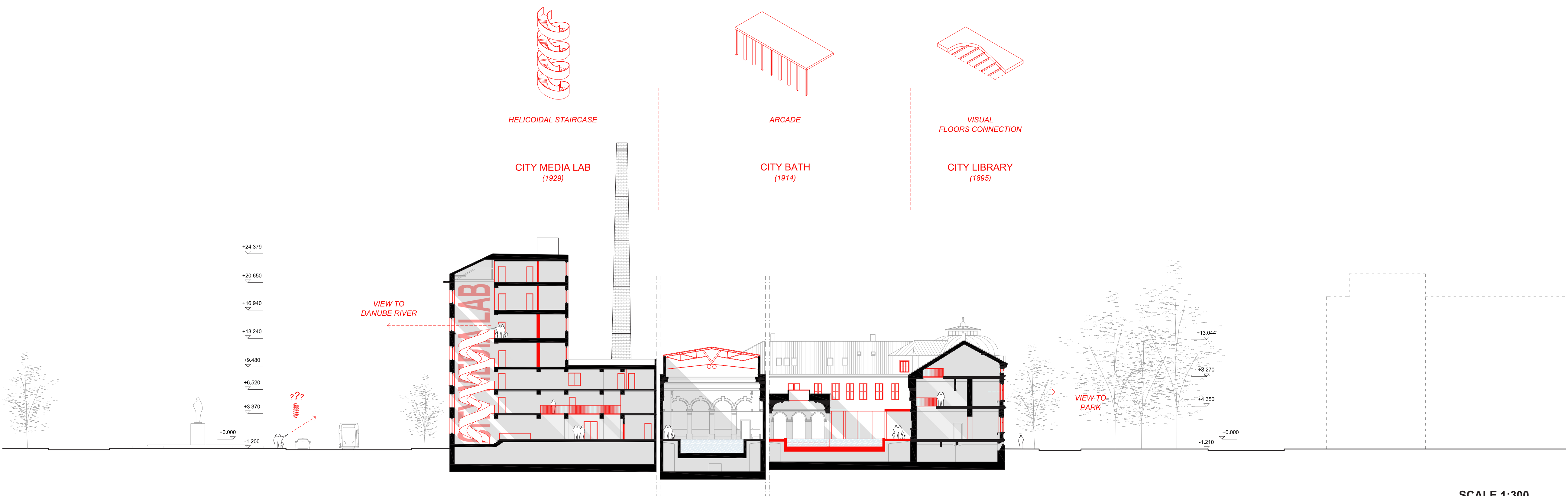
- Lobby: 60 m2
- City living room: 105 m2
- Library of things: 20 m2
- 0/24 Studying area: 55 m2
- Self service machines: 4 different points
- Study rooms: 103 m2
- Space with computers: 120 m2
- Open access shelves: 290 m2
- Workshop: 92 m2
- Board games: 35 m2
- Office for the executive: 13 m2
- Office: 17 m2

CAFE (1929)

- Indoor space: 65 m2
- Outdoor covered terrace: 75 m2
- Relax reading space: 60 m2
- Kitchen and service spaces: 26 m2

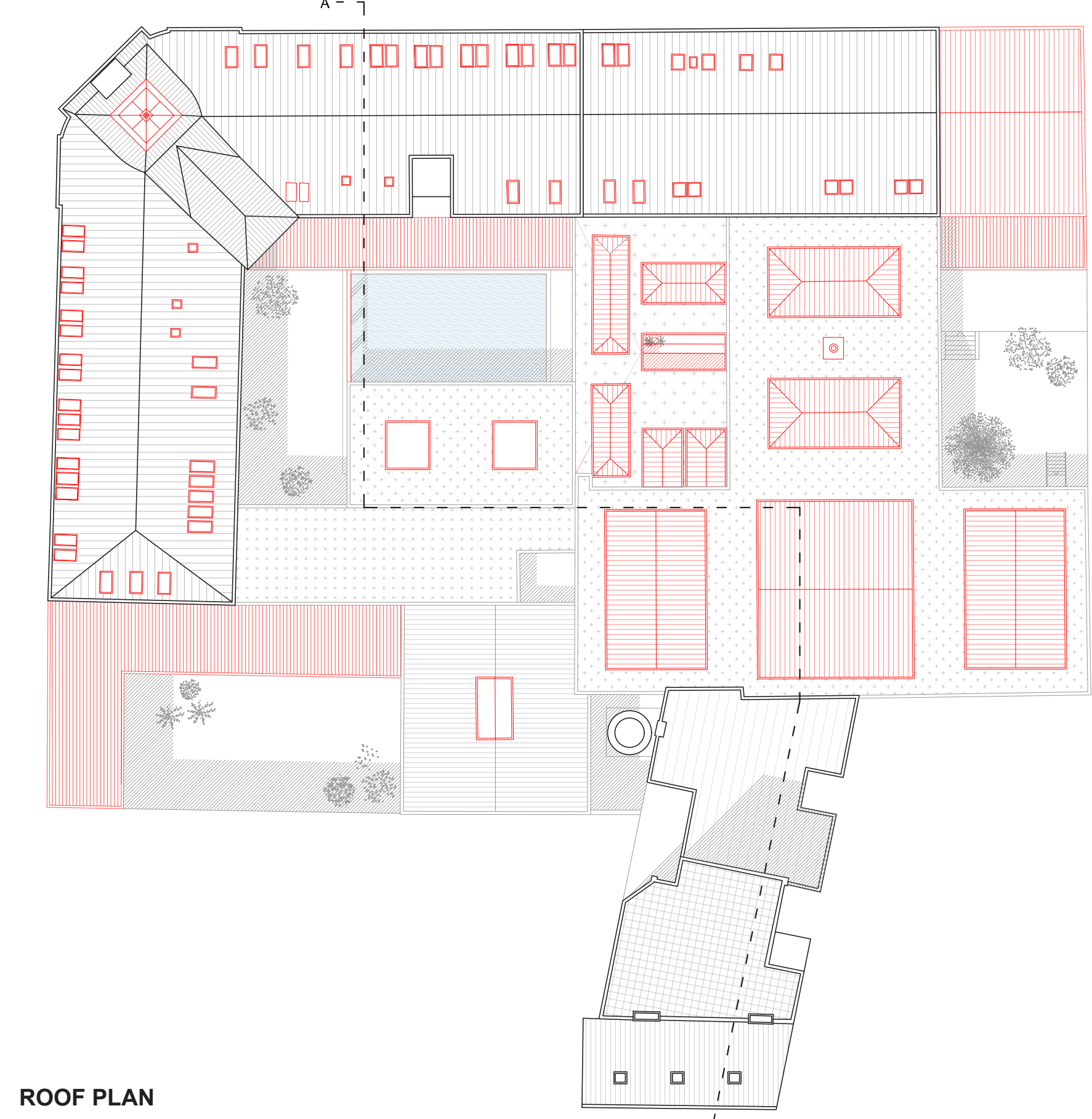




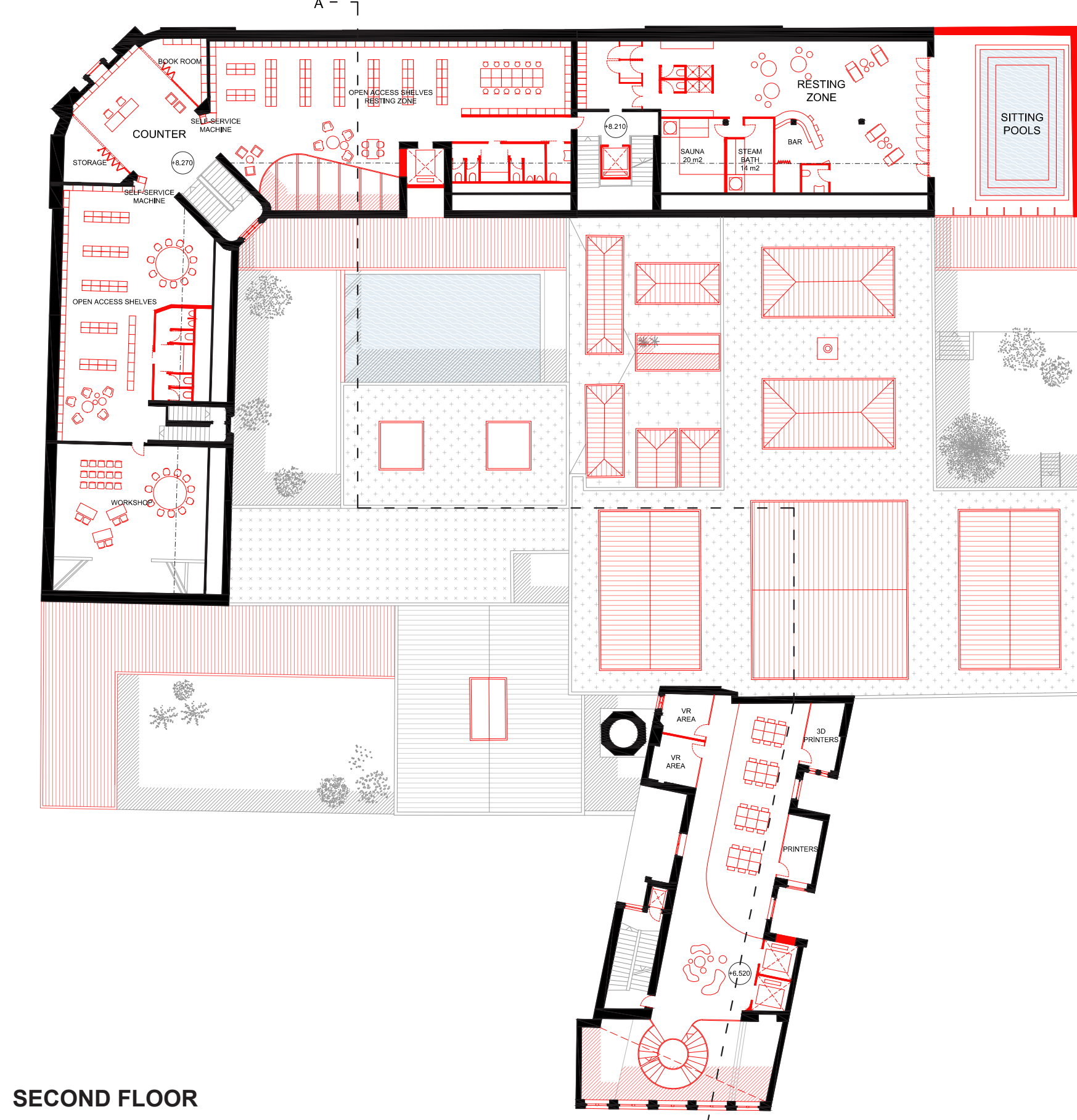


SECTION AA

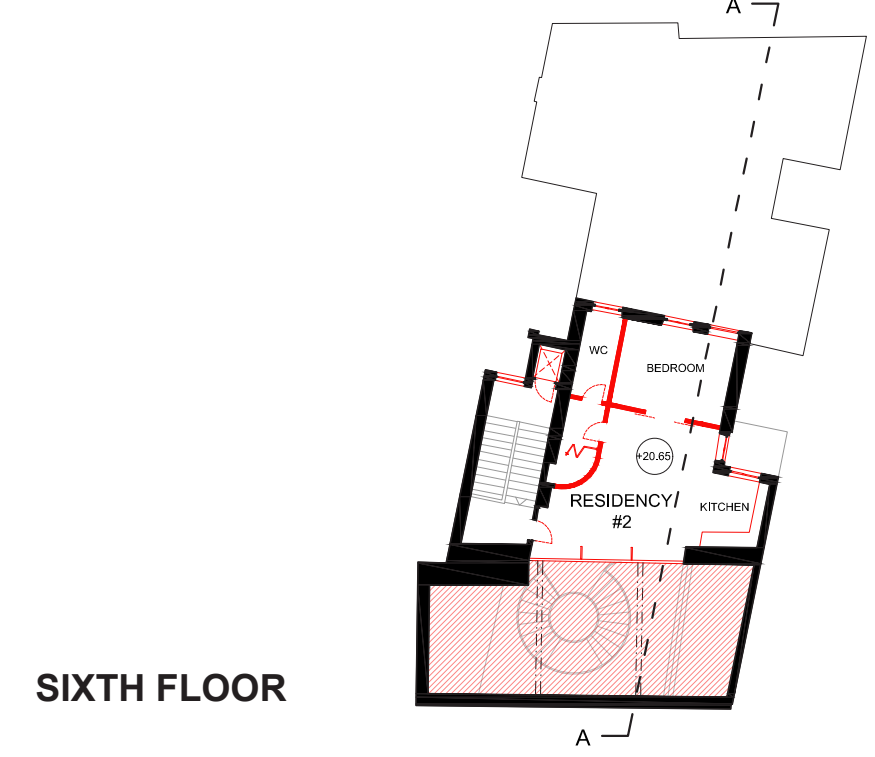
SCALE 1:300  
0 3 15 m



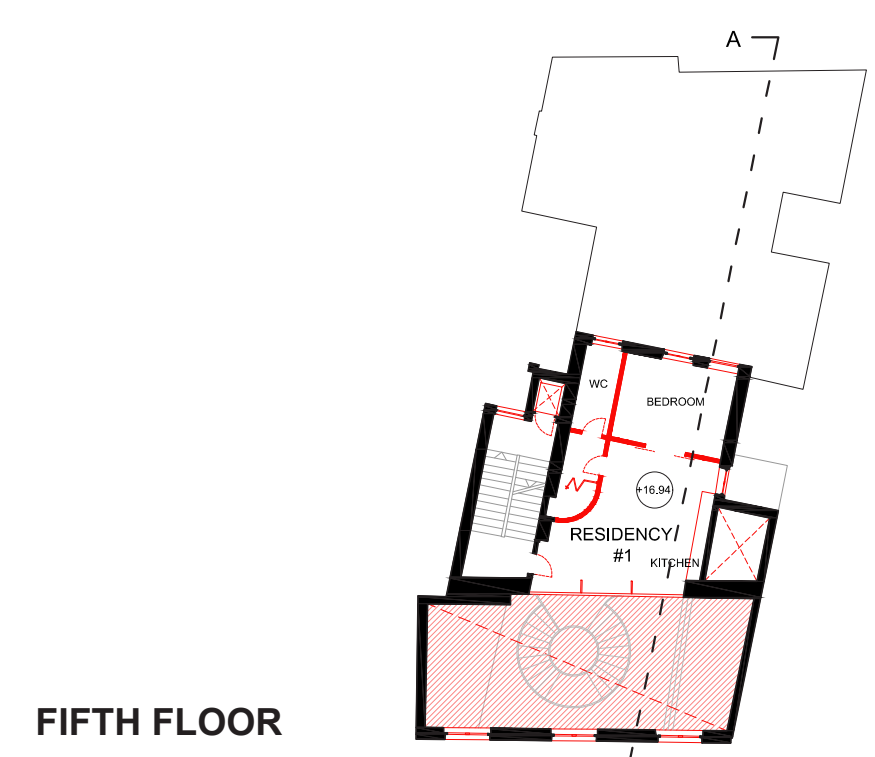
ROOF PLAN



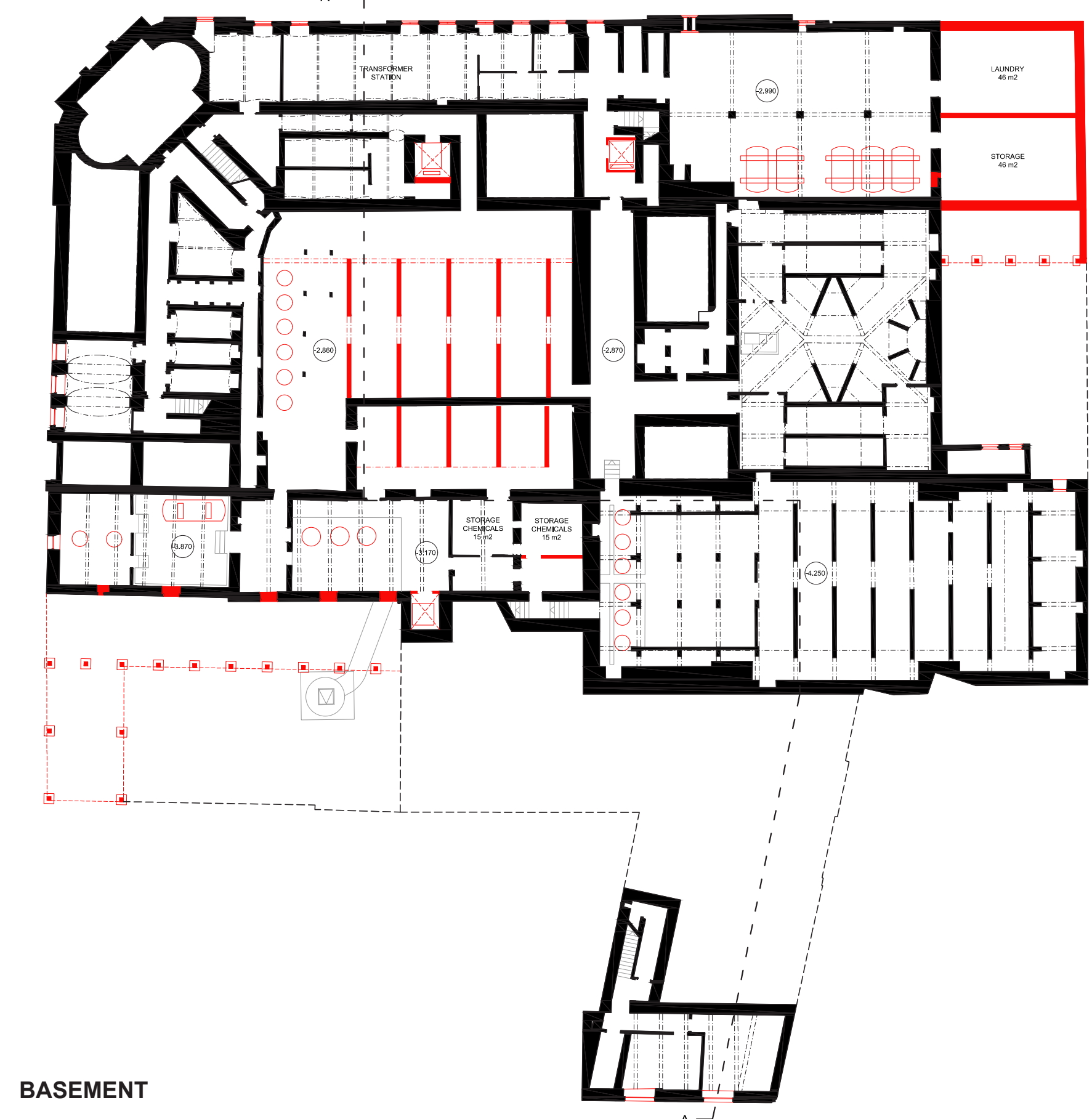
SECOND FLOOR



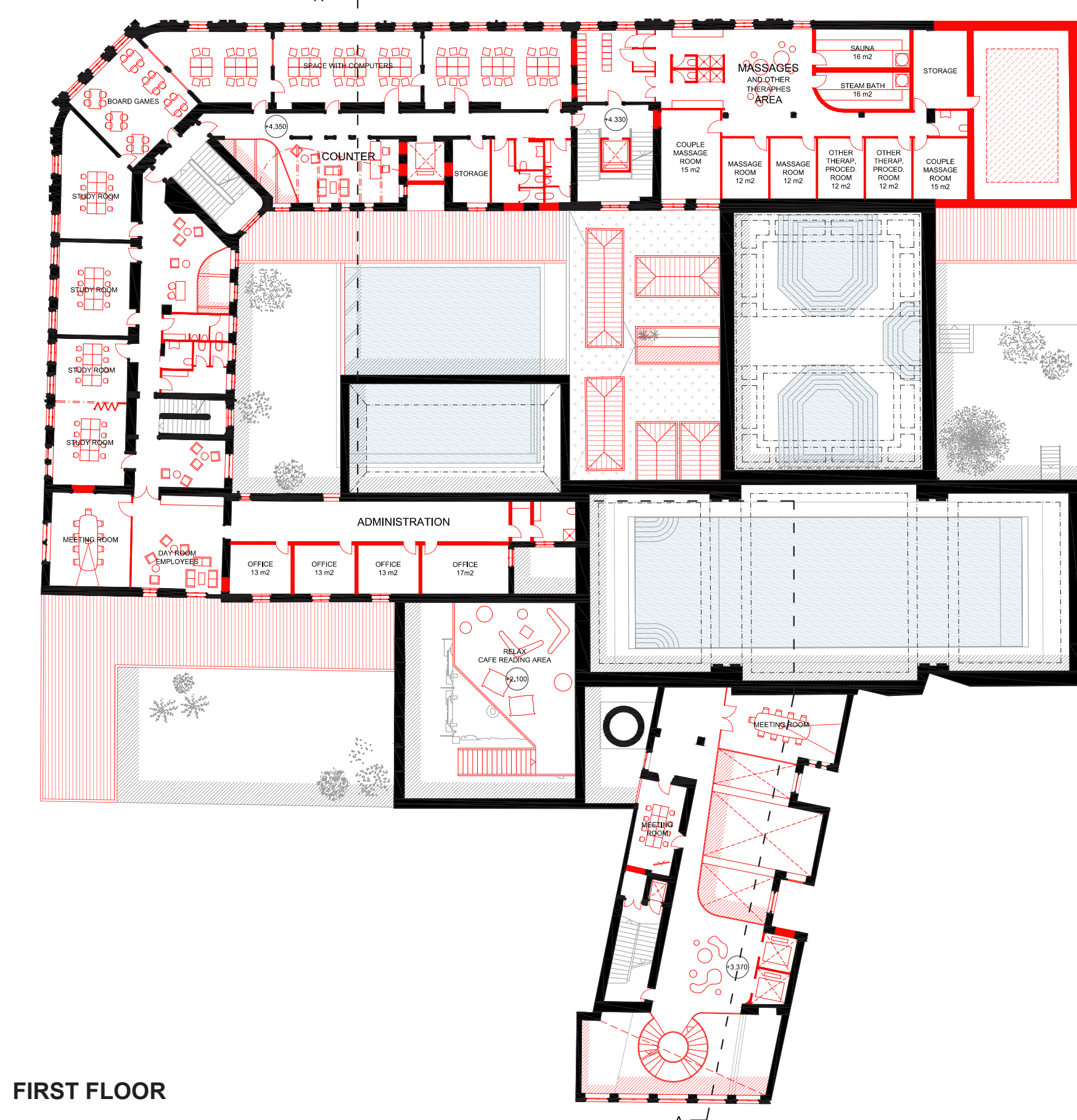
SIXTH FLOOR



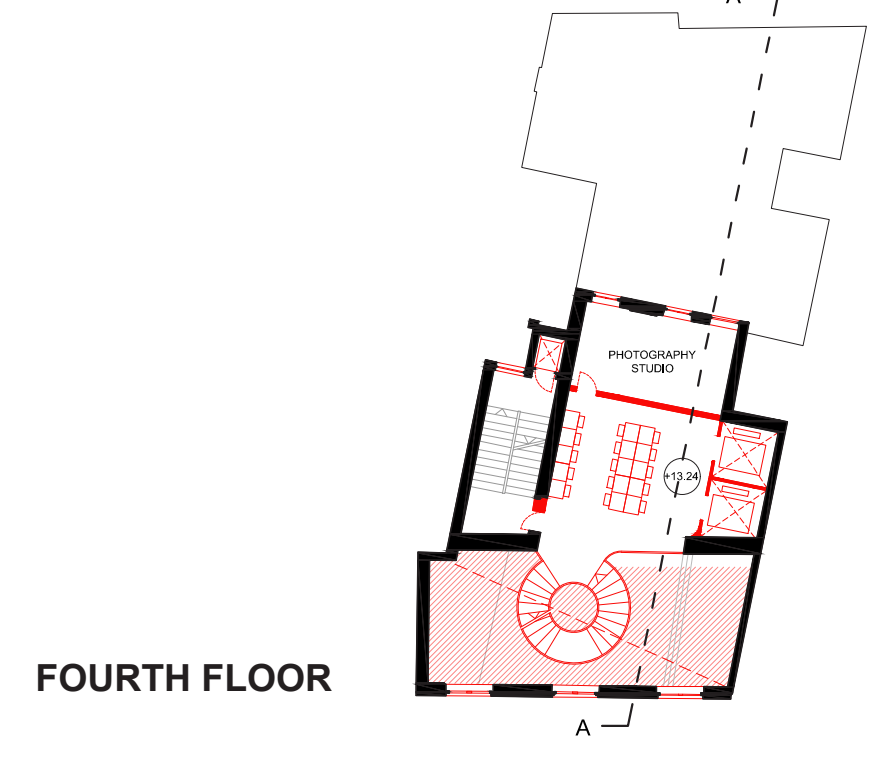
FIFTH FLOOR



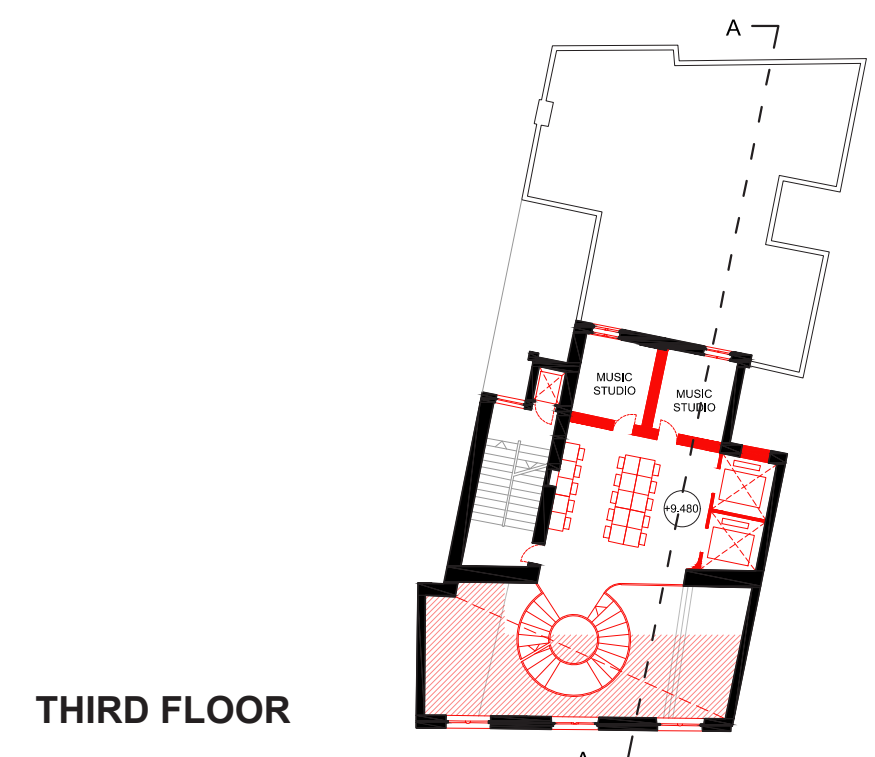
BASEMENT



FIRST FLOOR



FOURTH FLOOR

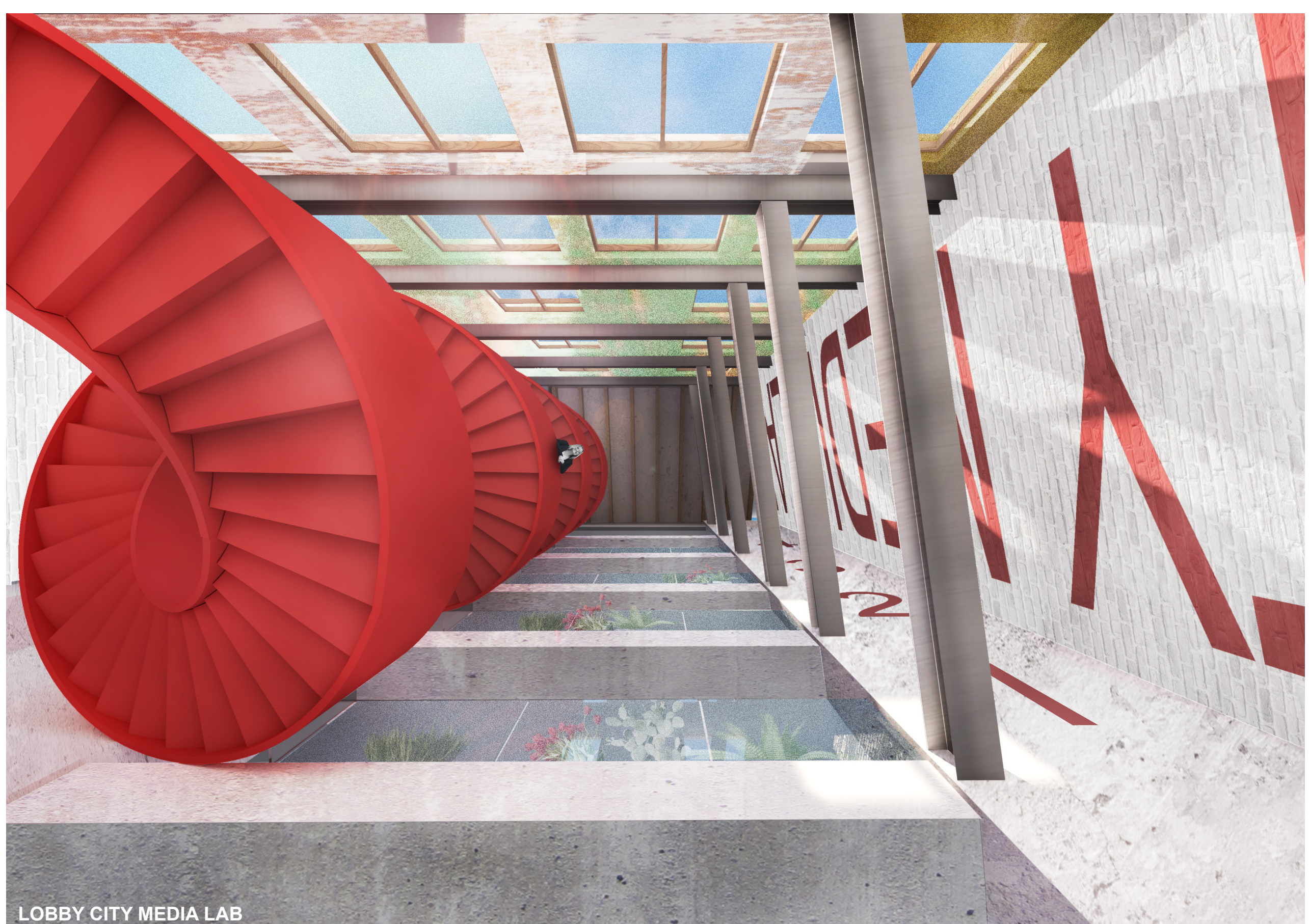


THIRD FLOOR

SCALE 1:300  
0 3 15 m



LIBRARY GROUND FLOOR



LOBBY CITY MEDIA LAB