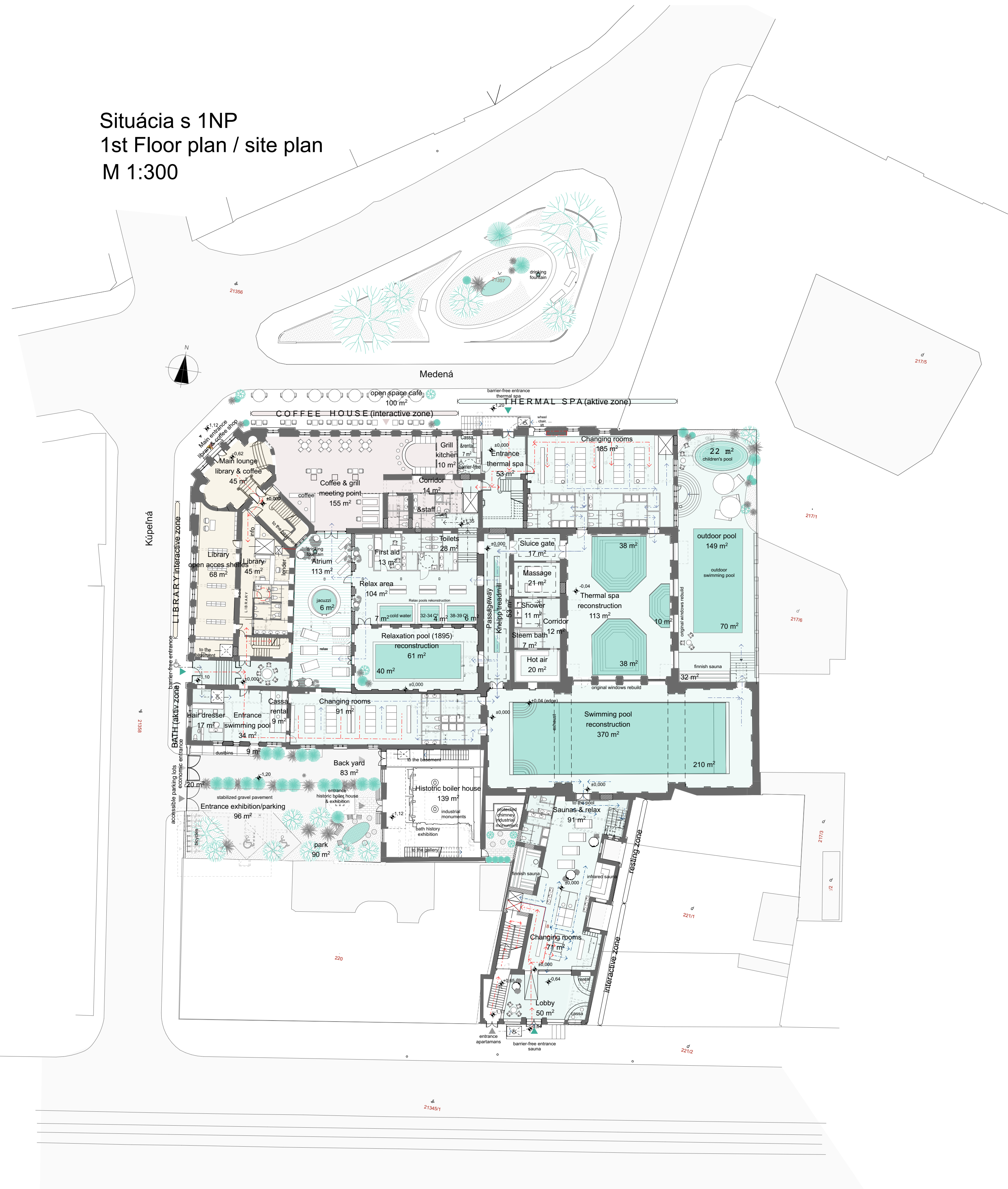


# PANEL 1.

## International architectural design competition for the renovation of the Grössling Baths in Bratislava

Situácia s 1NP  
1st Floor plan / site plan  
M 1:300



### ARCHITECTURAL CONCEPT

The plan solves the program by restoring the most significant monumental values of the different construction periods according to the needs of today.

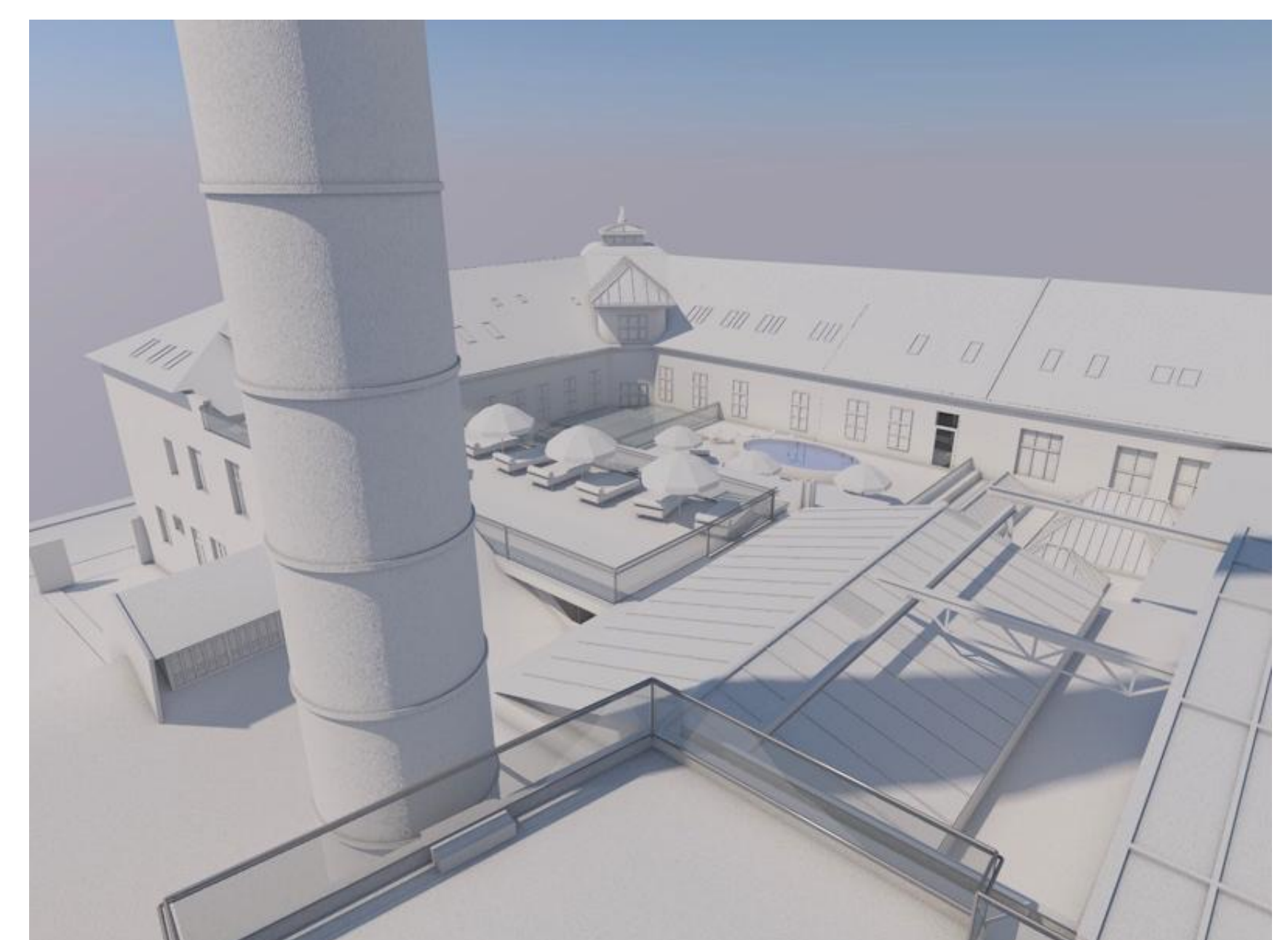
An outstanding aspect - in parallel with the reconstruction of the former, later rebuilt women's pool space - is the restoration of the inner courtyard (condition of 1895) as an overhead lit atrium. This proposal allows for a transparent relationship of functions, transparency of interiors.

Another goal is to clearly separate the functions for different purposes by avoiding intersections of operation. This is a fundamental principle in a bathing building, where it is necessary to separate the dressed and the bathing suit traffic from a hygienic point of view. This goal is ensured by the creation of separate entrances, separate stairs and elevators, separate changing rooms and shower blocks in the entire building complex. The interactive and relaxing zones of the Thermal Bath, the Swimming Pool and the Sauna World will be transformed into independently accessible units, taking into account the different age groups and different needs of the visiting audience.

The Library and the Café are also separate departments, while access is ensured from all units. All the possibilities of the complex will be exploited for the establishment of additional pools, relaxation areas, roof terraces.

There is a significant intention to make extensive use of renewable energy instead of fossil fuels sources for sustainability.

This is how the multifunctional complex becomes a community venue for the city's leisure, health, educational and cultural encounters.



### LEGENDA

- City Bath area
- City Library area
- Café area
- water surface
- paved surface
- grass/green field
- original wall
- new wall
- release wall
- way with shoes ("dry way")
- clean way ("wet way")
- elevator
- platform lift

### AREAS

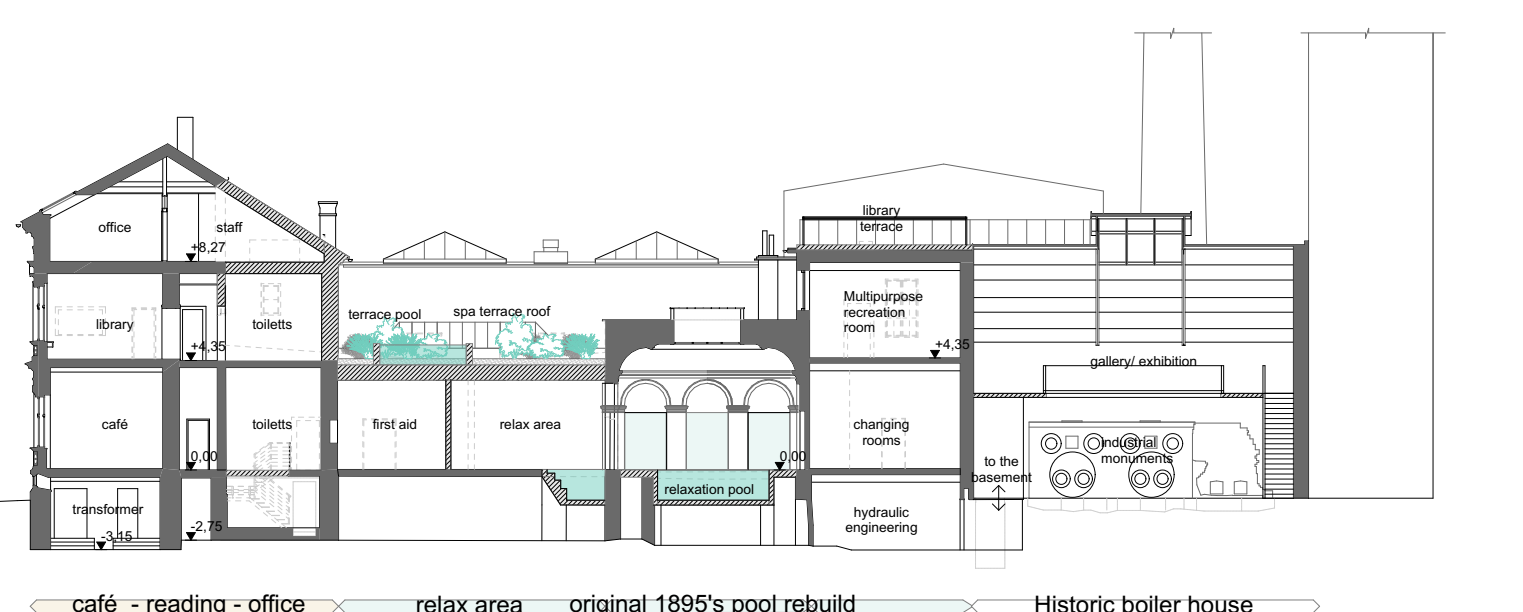
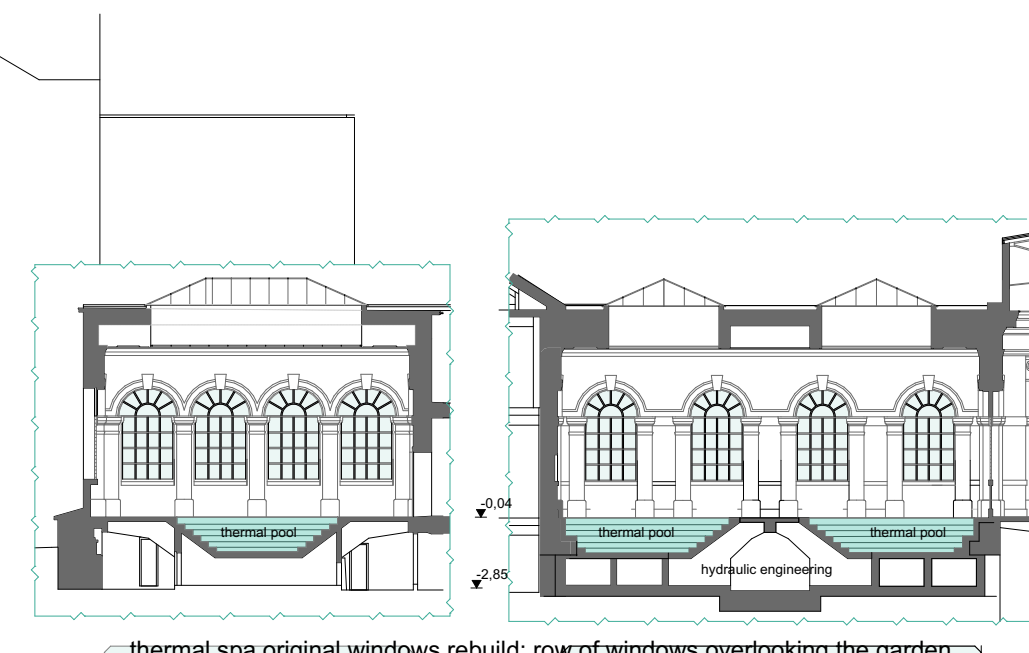
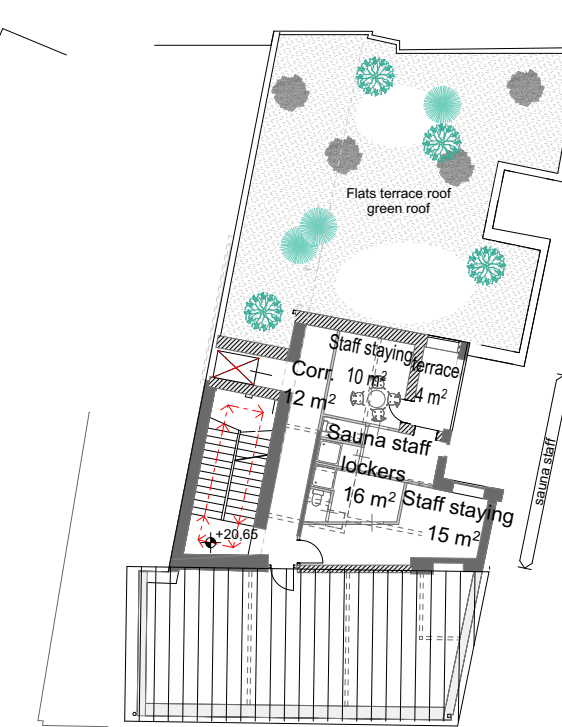
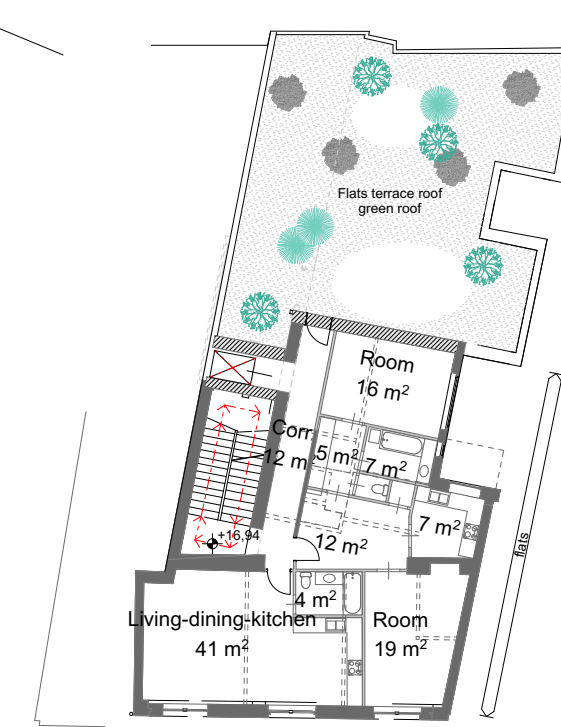
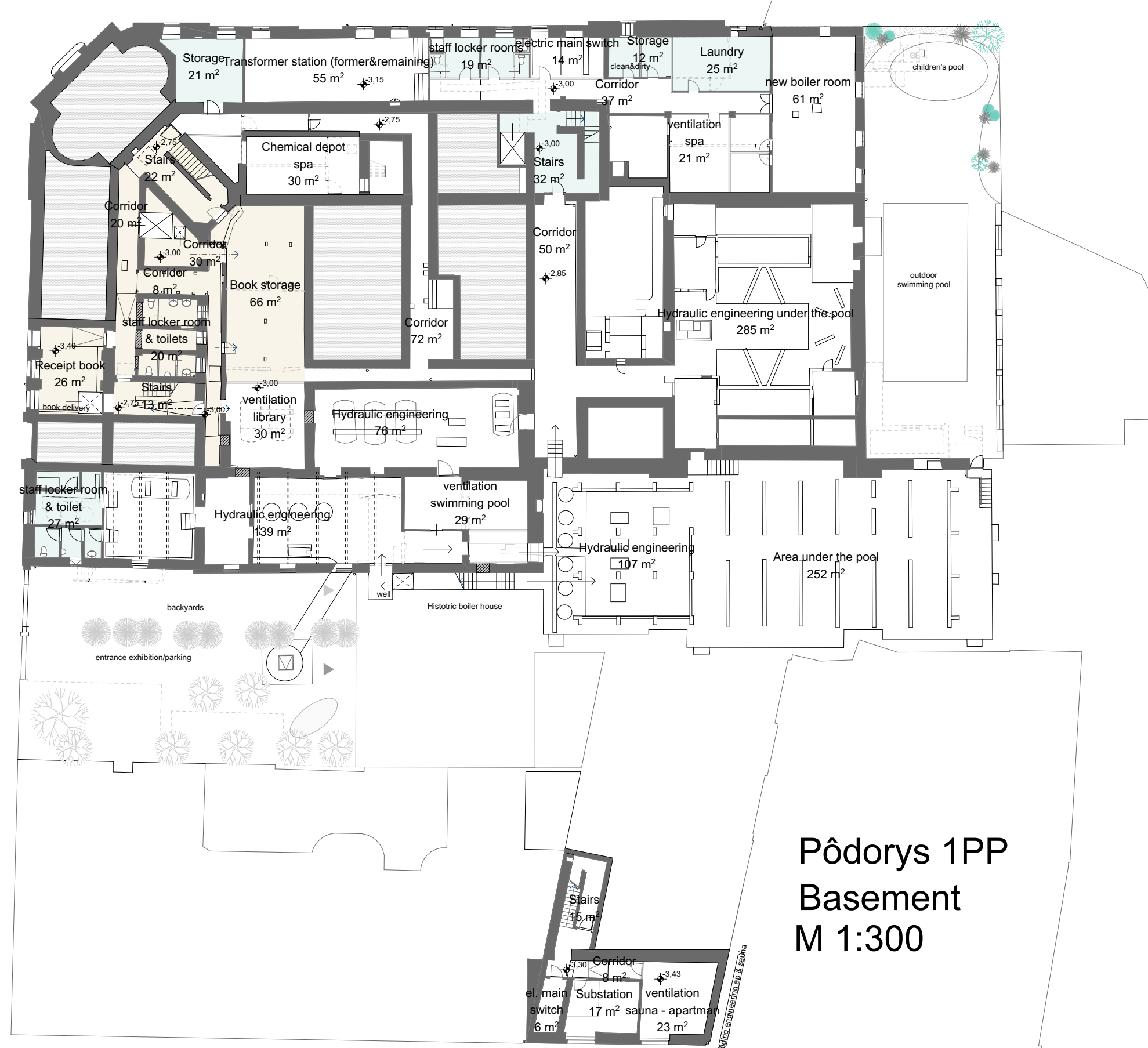
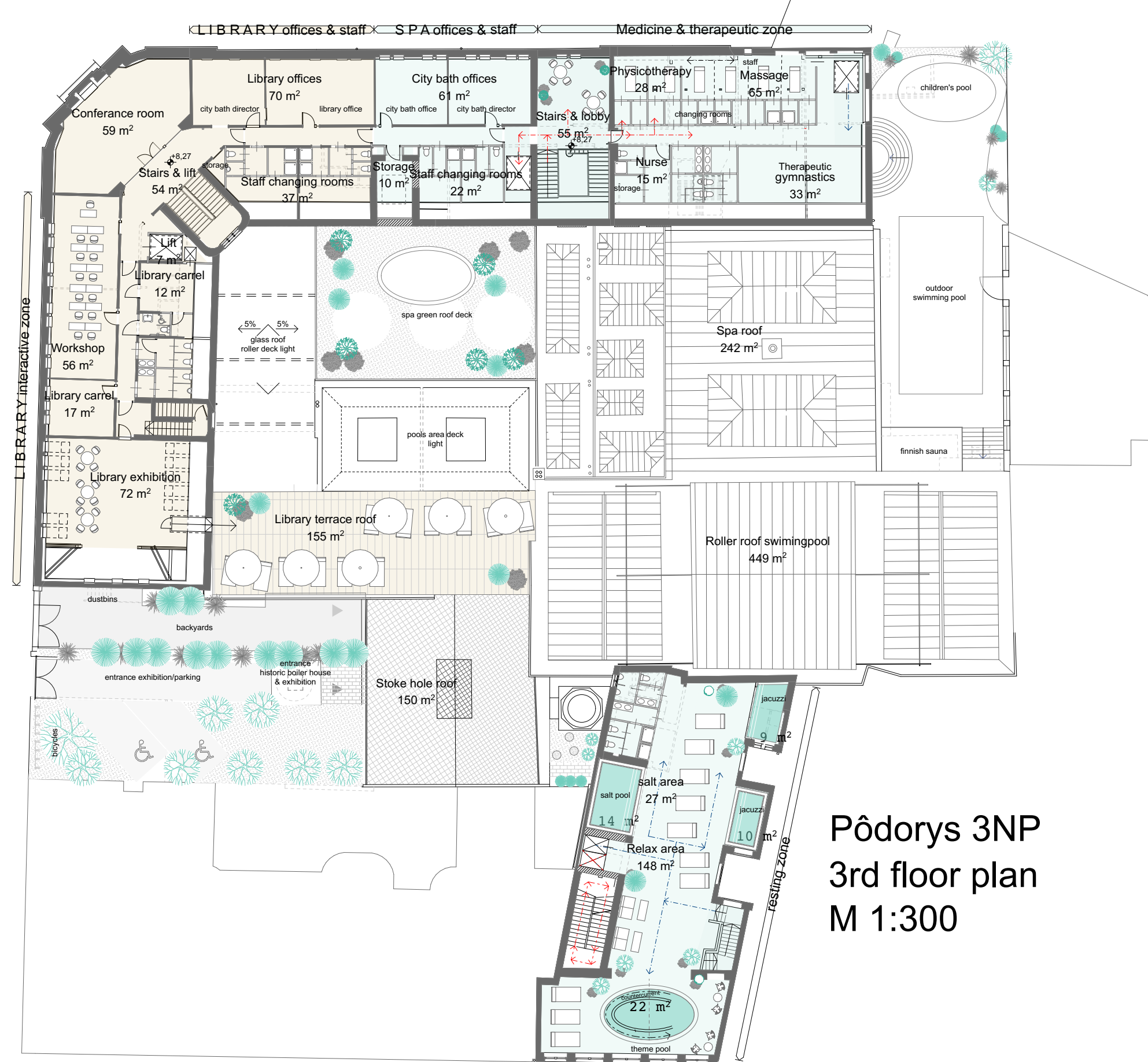
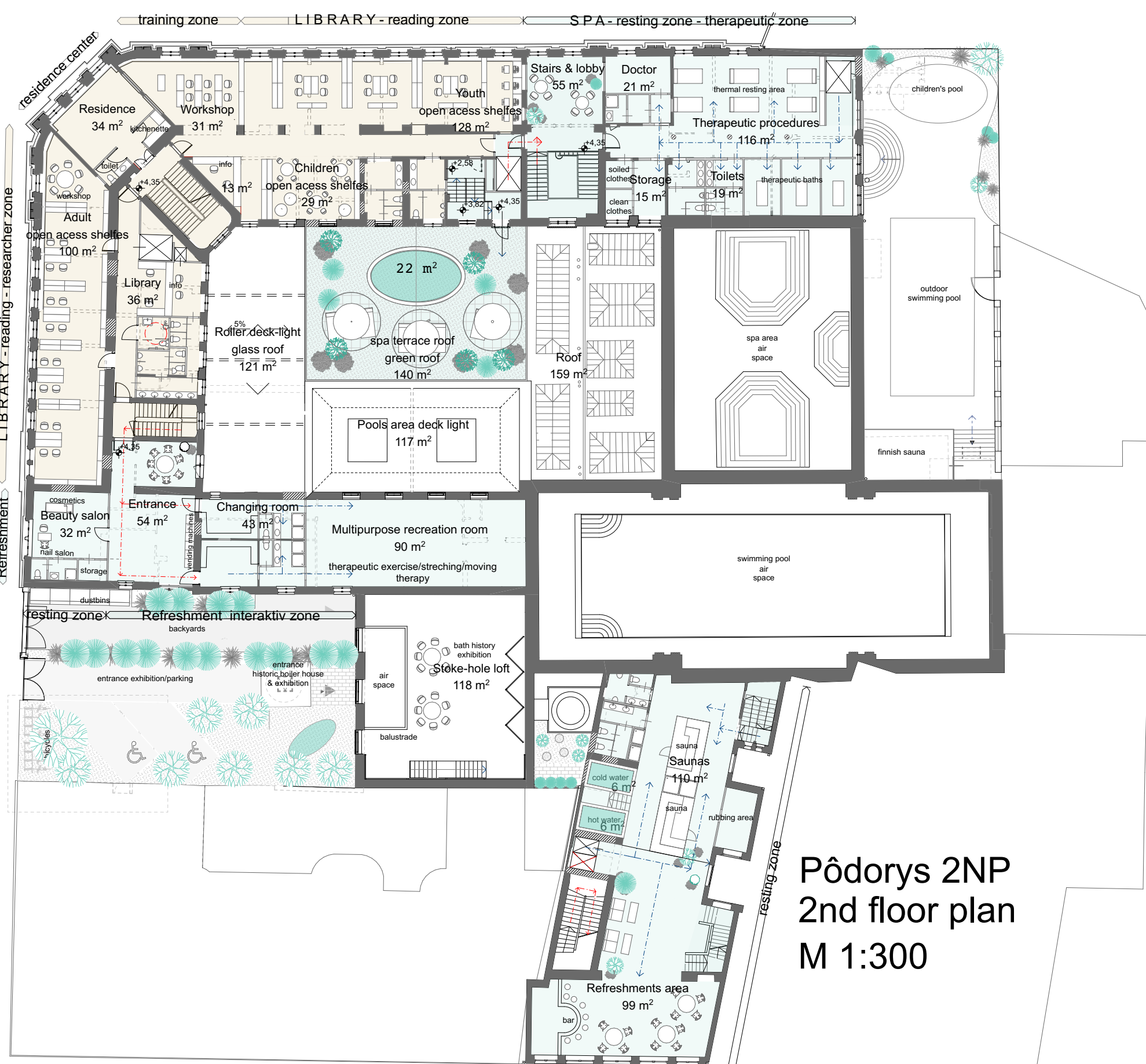
City Bath area - interactive zone	2900,64 m <sup>2</sup>
City Bath area - resting zone	641,31 m <sup>2</sup>
City Library area	1291,57 m <sup>2</sup>
Café area	307,16 m <sup>2</sup>
Water surface	539,69 m <sup>2</sup>
Park (paved, unpaved surface)	185,54 m <sup>2</sup>
Courtyards (paved, unpaved, pools)	291,69 m <sup>2</sup>
Flats	575,26 m <sup>2</sup>
Roofs	1756,22 m <sup>2</sup>
Technological facility	1237,88 m <sup>2</sup>

"Grössling"



PANEL 2.

International architectural design competition for the renovation of the Grössling Baths in Bratislava



Rezopohľad  
Sectional elevation  
1:300

"Grössling"